

LEA Name : Coatesville Area SD  
Address : 3030 CG Zinn Rd  
Thorndale , PA 19372

County : Chester  
AUN Number : 124151902  
LEA Type : SD


## Annual Financial Report Accuracy Certification Statement

For Fiscal Year Ending  
6/30/2021

Pennsylvania Department of Education  
&  
Office of Comptroller Operations

PDE-2056: Intermediate Unit  
PDE-2057: School District, AVTS/CTC, Charter School,  
and Special Program Jointure

**CERTIFICATION: By signing this page I agree that the electronic data submitted is a complete and accurate statement of the financial operations and status of the local education agency for the fiscal year. It has been prepared in accordance with generally accepted accounting principles and established Commonwealth of PA reporting guidelines.**

  
\_\_\_\_\_  
Chief School Administrator Signature

3/7/2022  
\_\_\_\_\_  
Date

  
\_\_\_\_\_  
Board Secretary Signature

03/07/2022  
\_\_\_\_\_  
Date

Lori Diefendenfer  
\_\_\_\_\_  
Contact Person

(610)466-2400 Ext :82409  
\_\_\_\_\_  
Contact Person Telephone Number

DiefendenferL@casdschools.org  
\_\_\_\_\_  
Contact Person E-mail Address

\_\_\_\_\_  
Contact Person Fax Number


**Audit Certification**  
**Annual Financial Report:**  
For Fiscal Year Ending **6/30/2021**  
**(Pursuant to PA School Code Section 218(b))**

LEA Name : Coatesville Area SD  
AUN Number : 124151902  
County : Chester

<b>Audit Certification Due:</b> 12/31/2021
-----------------------------------------------

This certification is applicable to the Annual Financial Report data submitted through the Consolidated Financial Reporting System (CFRS).

CERTIFICATION: By signing this page I agree that the financial statements of the school have been properly audited as noted above pursuant to Article XXIV, and in the auditor's professional opinion, the Annual Financial Report (PDE-2057) submitted through CFRS is materially consistent with the audited financial statements.

Chief School Administrator  
  
\_\_\_\_\_  
Signature

12/31/2021  
\_\_\_\_\_  
Date

Board Secretary  
  
\_\_\_\_\_  
Signature

12/31/21  
\_\_\_\_\_  
Date

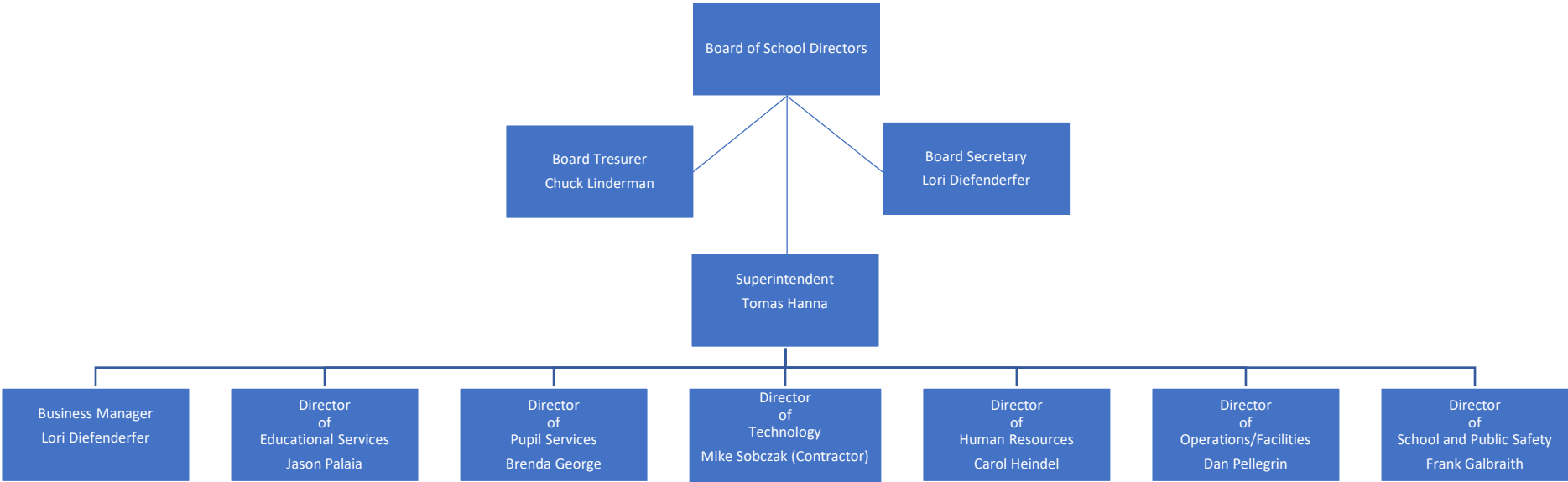
Lori Diefendenfer  
\_\_\_\_\_  
Contact Person

DiefendenferL@casdschools.org  
\_\_\_\_\_  
Contact Person E-mail Address

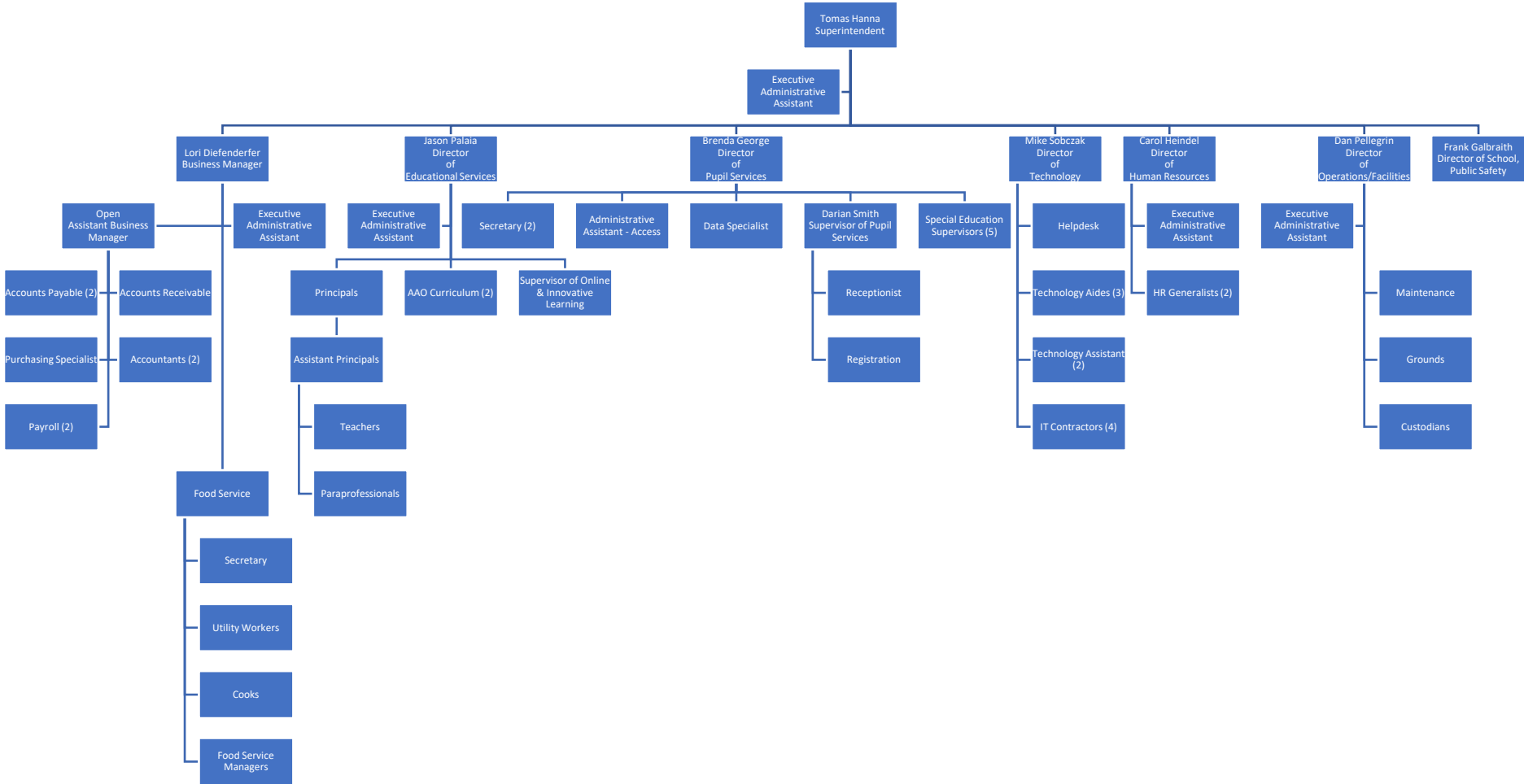
(610)466-2400      Ext : 82409  
\_\_\_\_\_  
Contact Person Telephone Number

\_\_\_\_\_  
Contact Person Fax Number

# Coatesville Area School District Organizational Chart



# Coatesville Area School District Organizational Chart



Book	Policy Manual
Section	600 Finances
Title	Purchases Subject to Bid/Quotation
Code	610
Status	Active
Adopted	June 27, 2017

### **Authority**

It is the policy of the Board to obtain competitive bids and price quotations for products and services where such bids or quotations are required by law or may result in monetary savings to the school district. [\[1\]](#)[\[2\]](#)

### **Guidelines**

The amounts contained in this policy regarding competitive bid and price quotation requirements are subject to adjustments based on the Consumer Price Index. [\[1\]](#)[\[2\]](#)[\[3\]](#)

### **Competitive Bids**

When seeking competitive bids, the Board shall advertise once a week for three (3) weeks in not less than two (2) newspapers of general circulation. [\[1\]](#)[\[2\]](#)

After due public notice advertising for competitive bids, the Board shall be authorized to:

1. Purchase furniture, equipment, school supplies and appliances costing a base amount of \$19,400 or more, unless exempt by law. [\[2\]](#)
2. Contract for construction, reconstruction, repairs, maintenance or work on any school building or property having a total cost or value of more than \$19,400, unless exempt by law. [\[1\]](#)

The Board prohibits the practice of splitting purchases to avoid advertising and bidding requirements. [\[1\]](#)[\[2\]](#)

With kind, quality and material being equal, the bid of the lowest responsible bidder meeting bid specifications shall be accepted upon resolution of the Board, unless the Board chooses to reject all bids. [\[1\]](#)[\[2\]](#)

The Board recognizes that emergencies may occur when imminent danger exists to persons or property or continuance of existing school classes is threatened, and time for bidding cannot be provided because of the need for immediate action. Bidding decisions in the event of such emergencies shall be made in accordance with existing legal requirements. [\[1\]](#)

### **Price Quotations**

Unless exempt by law, at least three (3) written or telephonic price quotations shall be requested by the Board for: [\[1\]](#)[\[2\]](#)

1. Furniture, equipment, school supplies and appliances costing a base amount of more than \$10,500 but less than \$19,400. [\[2\]](#)
2. All contracts for construction, reconstruction, repairs, maintenance or work on any school building or property, having a total cost or value of more than \$10,500 but less than \$19,400. [\[1\]](#)

If it is not possible to obtain three (3) quotations, a memorandum must be kept on file showing that fewer than three (3) qualified vendors exist in the market area. The written price quotations, written records of telephonic price quotations and memoranda shall be kept on file for three (3) years.

### **Work Performed by District Maintenance Personnel**

The Board may authorize district maintenance personnel to perform construction, reconstruction, repairs or work having a total cost or value of less than \$10,500. [\[1\]](#)

## **Delegation of Responsibility**

The Board may grant the Board Secretary or Purchasing Agent the authority to purchase supplies and award contracts in the amount and manner designated by applicable law.[\[1\]](#)[\[2\]](#)

- Legal
1. 24 P.S. 751
  2. 24 P.S. 807.1
  3. 24 P.S. 120
- 62 Pa. C.S.A. 4601 et seq

<u>Val Number</u>	<u>Description</u>	<u>Justification</u>
42420	Expenditure Detail: Total current year 2700-513 expenditure varies from prior year by 10%. Correct the data or enter a justification.  2700-513, AFR Exp Detail: \$8,187,990.96 2700-513, PY AFR Amount: \$10,028,567.95	Due to COVID, students came back October, 2020. Transportation was for Special Education Students only.
50160	SOIN: All Governmental Fund General Obligation Bonds must include an amount for Interest Paid during Fiscal Year. Correct data or enter a justification.	The bonds that originate in the 2020-2021 fiscal year did not have any payments made.
50180	SOIN: All Governmental Fund General Obligation Bonds must include an amount for Amount Due Within One Year (Principal and Interest). Correct data or enter a justification.	the new bonds that originate in the fiscal year have a delayed repayment schedule. Series 2020 D will begin repayment in 2023. Series 2020 A, B and C will begin repayment in 2034 and 2035.
50470	SESS - 2440 Nursing Services: SESS Schedule amounts for Special Education vary from prior year by 40% or more. Correct the data or enter a justification.  SESS Schedule 2440: \$43,353.50 Prior Year SESS Schedule 2440: \$0.00	Account code corrected in March for Professional Nursing Services(Criticare Home Health and Nursing Services)

Amounts Expressed in Whole Dollars

<u>General Fund</u> <u>(10)</u>	<u>Student Sponsored</u> <u>Activity Fund</u> <u>(21)</u>	<u>Public Purpose Trust</u> <u>(27)</u>	<u>Other Compt Approved</u> <u>(28)</u>	<u>Athletic / Activity</u> <u>(29)</u>
------------------------------------	-----------------------------------------------------------------	--------------------------------------------	--------------------------------------------	-------------------------------------------

**Assets And Deferred Outflows Of Resources**

<b>Assets</b>	
0100 Cash and Cash Equivalents	13,431,542
0110 Investments	
0120 Taxes Receivable	7,179,740
0130 Due From Other Funds	826,117
0141 Due From Other Governments	7,339,721
0142 State Revenue Receivable	
0143 Federal Revenue Receivable	
0145 Other Intergovernmental Revenue Receivable	
0146 Due from Primary Government	
0147 Due from Component Unit	
0150 Other Receivables	222,980
0170 Inventories	
0180 Prepaid Expenses (Expenditures)	
0190 Other Current Assets	354,000

<b>Total Assets</b>	<b>\$29,354,100</b>
---------------------	---------------------

0910 Deferred Outflows of Resources

<b>Total Assets And Deferred Outflows Of Resources</b>	<b>\$29,354,100</b>
--------------------------------------------------------	---------------------



Amounts Expressed in Whole Dollars

<u>Capital Reserve (690.</u>	<u>Capital Reserve (1431)</u>	<u>Other Capital Projects</u>	<u>Debt Service</u>	<u>Permanent</u>
<u>1850)</u>	<u>(32)</u>	<u>Fund</u>	<u>(40)</u>	<u>(90)</u>
<u>(31)</u>		<u>(39)</u>		

**Assets And Deferred Outflows Of Resources**

**Assets**

0100	Cash and Cash Equivalents		753,381	19,845,550
0110	Investments			
0120	Taxes Receivable			
0130	Due From Other Funds			
0141	Due From Other Governments			
0142	State Revenue Receivable			
0143	Federal Revenue Receivable			
0145	Other Intergovernmental Revenue Receivable			
0146	Due from Primary Government			
0147	Due from Component Unit			
0150	Other Receivables			
0170	Inventories			
0180	Prepaid Expenses (Expenditures)			
0190	Other Current Assets			

<b>Total Assets</b>	<b>\$753,381</b>	<b>\$19,845,550</b>
---------------------	------------------	---------------------

0910 Deferred Outflows of Resources

<b>Total Assets And Deferred Outflows Of Resources</b>	<b>\$753,381</b>	<b>\$19,845,550</b>
--------------------------------------------------------	------------------	---------------------

Amounts Expressed in Whole Dollars

**Total Governmental Funds**

**Assets And Deferred Outflows Of Resources**

<b>Assets</b>	
0100 Cash and Cash Equivalents	34,030,473
0110 Investments	
0120 Taxes Receivable	7,179,740
0130 Due From Other Funds	826,117
0141 Due From Other Governments	7,339,721
0142 State Revenue Receivable	
0143 Federal Revenue Receivable	
0145 Other Intergovernmental Revenue Receivable	
0146 Due from Primary Government	
0147 Due from Component Unit	
0150 Other Receivables	222,980
0170 Inventories	
0180 Prepaid Expenses (Expenditures)	
0190 Other Current Assets	354,000
<b>Total Assets</b>	<b>\$49,953,031</b>
0910 Deferred Outflows of Resources	
<b>Total Assets And Deferred Outflows Of Resources</b>	<b>\$49,953,031</b>

Amounts Expressed in Whole Dollars

	<u>General Fund</u> <u>(10)</u>	<u>Student Sponsored</u> <u>Activity Fund</u> <u>(21)</u>	<u>Public Purpose Trust</u> <u>(27)</u>	<u>Other Compt Approved</u> <u>(28)</u>	<u>Athletic / Activity</u> <u>(29)</u>
<b>Liabilities And Deferred Inflows Of Resources And Fund Balances</b>					
<b>Liabilities</b>					
0400 Due to Other Funds					
0411 Due to Other Governments					
0412 Due to Primary Government					
0413 Due to Component Unit					
0420 Accounts Payable	12,804,841				
0430 Contracts Payable					
0440 Current Portion of Long-Term Debt					
0450 Short-Term Payables					
0461 Accrued Salaries and Benefits	10,353,594				
0462 Payroll Deductions and Withholding					
0480 Unearned Revenues	6,331,952				
0490 Other Current Liabilities					
<b>Total Liabilities</b>	<b>\$29,490,387</b>				
0950 Deferred Inflows of Resources	1,702,412				
<b>Fund Balances</b>					
0810 Nonspendable Fund Balance					
0820 Restricted Fund Balance					
0830 Committed Fund Balance					
0840 Assigned Fund Balance					
0850 Unassigned Fund Balance	(1,838,699)				
<b>Total Fund Balances</b>	<b>(\$1,838,699)</b>				
<b>Total Liabilities, Deferred Inflows Of Resources And Fund Balances</b>	<b>\$29,354,100</b>				

Amounts Expressed in Whole Dollars

<u>Capital Reserve (690.</u>	<u>Capital Reserve (1431)</u>	<u>Other Capital Projects</u>	<u>Debt Service</u>	<u>Permanent</u>
<u>1850)</u>	<u>(32)</u>	<u>Fund</u>	<u>(40)</u>	<u>(90)</u>
<u>(31)</u>		<u>(39)</u>		

**Liabilities And Deferred Inflows Of Resources And Fund Balances**

**Liabilities**

0400 Due to Other Funds			191,374	
0411 Due to Other Governments				
0412 Due to Primary Government				
0413 Due to Component Unit				
0420 Accounts Payable			259,810	
0430 Contracts Payable				
0440 Current Portion of Long-Term Debt				
0450 Short-Term Payables				
0461 Accrued Salaries and Benefits				
0462 Payroll Deductions and Withholding				
0480 Unearned Revenues				
0490 Other Current Liabilities				

<b>Total Liabilities</b>			<b>\$451,184</b>
--------------------------	--	--	------------------

0950 Deferred Inflows of Resources

**Fund Balances**

0810 Nonspendable Fund Balance				
0820 Restricted Fund Balance	753,381		19,394,366	
0830 Committed Fund Balance				
0840 Assigned Fund Balance				
0850 Unassigned Fund Balance				

<b>Total Fund Balances</b>	<b>\$753,381</b>	<b>\$19,394,366</b>
----------------------------	------------------	---------------------

<b>Total Liabilities, Deferred Inflows Of Resources And Fund Balances</b>	<b>\$753,381</b>	<b>\$19,845,550</b>
---------------------------------------------------------------------------	------------------	---------------------

Amounts Expressed in Whole Dollars

**Total Governmental Funds**

**Liabilities And Deferred Inflows Of Resources And Fund Balances**

<b>Liabilities</b>	
0400 Due to Other Funds	191,374
0411 Due to Other Governments	
0412 Due to Primary Government	
0413 Due to Component Unit	
0420 Accounts Payable	13,064,651
0430 Contracts Payable	
0440 Current Portion of Long-Term Debt	
0450 Short-Term Payables	
0461 Accrued Salaries and Benefits	10,353,594
0462 Payroll Deductions and Withholding	
0480 Unearned Revenues	6,331,952
0490 Other Current Liabilities	
<b>Total Liabilities</b>	<b>\$29,941,571</b>
0950 Deferred Inflows of Resources	1,702,412
<b>Fund Balances</b>	
0810 Nonspendable Fund Balance	
0820 Restricted Fund Balance	20,147,747
0830 Committed Fund Balance	
0840 Assigned Fund Balance	
0850 Unassigned Fund Balance	(1,838,699)
<b>Total Fund Balances</b>	<b>\$18,309,048</b>
<b>Total Liabilities, Deferred Inflows Of Resources And Fund Balances</b>	<b>\$49,953,031</b>

Amounts Expressed in Whole Dollars	<u>General Fund</u> <u>(10)</u>	<u>Student Sponsored</u> <u>Activity Fund</u> <u>(21)</u>	<u>Public Purpose Trust</u> <u>(27)</u>	<u>Other Compt Approved</u> <u>(28)</u>	<u>Athletic / Activity</u> <u>(29)</u>
<b>Revenues</b>					
6000 Revenue from Local Sources	122,190,210				
7000 Revenue from State Sources	52,809,773				
8000 Revenue from Federal Sources	4,992,598				
<b>Total Revenues</b>	<b>\$179,992,581</b>				
<b>Expenditures</b>					
1000 Instruction	136,049,854				
2000 Support Services	35,953,490				
3000 Operation of Non-Instructional Services	1,044,497				
4000 Facilities Acquisition, Construction and Improvement Services					
5110 Debt Service	7,507,943				
5130 Refund of Prior Year Revenues / Receipts	1,550				
<b>Total Expenditures</b>	<b>\$180,557,334</b>				
<b>Excess (Deficiency) Of Revenues Over Expenditures</b>	<b>(\$564,753)</b>				
<b>Other Financing Sources (Uses)</b>					
9110 Face Value of Bonds Issued					
9120 Proceeds from Refunding of Bonds					
9130 Bond Premiums	63,277				
9200 Proceeds from Extended-Term Financing					
9300 Interfund Transfers - IN					
9400 Sale of or Compensation for Loss of Fixed Assets					
9710 Transfers from Component Units					
9720 Transfers from Primary Governments					
9910 Other Financing Sources Not Listed in the 9000 Series					
9990 Insurance Recoveries	243,565				
5120 Debt Service – Refunded Bonds					
5150 Bond Discounts					
5200 Interfund Transfers – Out	95,424				
5300 Transfers Out to Component Units/Primary Governments					
<b>Total Other Financing Sources (Uses)</b>	<b>\$211,418</b>				

Amounts Expressed in Whole Dollars	<u>Capital Reserve (690, 1850 (31)</u>	<u>Capital Reserve (1431) (32)</u>	<u>Other Capital Projects Fund (39)</u>	<u>Debt Service (40)</u>	<u>Permanent (90)</u>
<b>Revenues</b>					
6000 Revenue from Local Sources		82	6,881		
7000 Revenue from State Sources					
8000 Revenue from Federal Sources					
<b>Total Revenues</b>		<b>\$82</b>	<b>\$6,881</b>		
<b>Expenditures</b>					
1000 Instruction					
2000 Support Services		127,572	66,472		
3000 Operation of Non-Instructional Services					
4000 Facilities Acquisition, Construction and Improvement Services			2,582,332		
5110 Debt Service					
5130 Refund of Prior Year Revenues / Receipts					
<b>Total Expenditures</b>		<b>\$127,572</b>	<b>\$2,648,804</b>		
<b>Excess (Deficiency) Of Revenues Over Expenditures</b>		<b>(\$127,490)</b>	<b>(\$2,641,923)</b>		
<b>Other Financing Sources (Uses)</b>					
9110 Face Value of Bonds Issued			21,050,075		
9120 Proceeds from Refunding of Bonds			81,276,706		
9130 Bond Premiums					
9200 Proceeds from Extended-Term Financing					
9300 Interfund Transfers - IN					
9400 Sale of or Compensation for Loss of Fixed Assets					
9710 Transfers from Component Units					
9720 Transfers from Primary Governments					
9910 Other Financing Sources Not Listed in the 9000 Series					
9990 Insurance Recoveries					
5120 Debt Service – Refunded Bonds			82,316,226		
5150 Bond Discounts					
5200 Interfund Transfers – Out					
5300 Transfers Out to Component Units/Primary Governments					
<b>Total Other Financing Sources (Uses)</b>			<b>\$20,010,555</b>		

Amounts Expressed in Whole Dollars	<u>Total Governmental Funds</u>
<b>Revenues</b>	
6000 Revenue from Local Sources	122,197,173
7000 Revenue from State Sources	52,809,773
8000 Revenue from Federal Sources	4,992,598
<b>Total Revenues</b>	<b>\$179,999,544</b>
<b>Expenditures</b>	
1000 Instruction	136,049,854
2000 Support Services	36,147,534
3000 Operation of Non-Instructional Services	1,044,497
4000 Facilities Acquisition, Construction and Improvement Services	2,582,332
5110 Debt Service	7,507,943
5130 Refund of Prior Year Revenues / Receipts	1,550
<b>Total Expenditures</b>	<b>\$183,333,710</b>
<b>Excess (Deficiency) Of Revenues Over Expenditures</b>	<b>(\$3,334,166)</b>
<b>Other Financing Sources (Uses)</b>	
9110 Face Value of Bonds Issued	21,050,075
9120 Proceeds from Refunding of Bonds	81,276,706
9130 Bond Premiums	63,277
9200 Proceeds from Extended-Term Financing	
9300 Interfund Transfers - IN	
9400 Sale of or Compensation for Loss of Fixed Assets	
9710 Transfers from Component Units	
9720 Transfers from Primary Governments	
9910 Other Financing Sources Not Listed in the 9000 Series	
9990 Insurance Recoveries	243,565
5120 Debt Service – Refunded Bonds	82,316,226
5150 Bond Discounts	
5200 Interfund Transfers – Out	95,424
5300 Transfers Out to Component Units/Primary Governments	
<b>Total Other Financing Sources (Uses)</b>	<b>\$20,221,973</b>



Amounts Expressed in Whole Dollars

<u>General Fund</u> <u>(10)</u>	<u>Student Sponsored</u> <u>Activity Fund</u> <u>(21)</u>	<u>Public Purpose Trust</u> <u>(27)</u>	<u>Other Compt Approved</u> <u>(28)</u>	<u>Athletic / Activity</u> <u>(29)</u>
------------------------------------	-----------------------------------------------------------------	--------------------------------------------	--------------------------------------------	-------------------------------------------

- Special And Extraordinary Items**
- 9920 Special Items – Gains
- 9930 Extraordinary Items – Gains
- 5520 Special Items – Losses
- 5530 Extraordinary Items – Losses

<b>Net Change In Fund Balances</b>	<b>(\$353,335)</b>
------------------------------------	--------------------

- Fund Balance**
- 0001 Fund Balance - Beginning of Fiscal Year

(1,485,361)

<b>Fund Balance - End Of Year</b>	<b>(\$1,838,696)</b>
-----------------------------------	----------------------

Amounts Expressed in Whole Dollars	<u>Capital Reserve (690.</u> <u>1850)</u> <u>(31)</u>	<u>Capital Reserve (1431)</u> <u>(32)</u>	<u>Other Capital Projects</u> <u>Fund</u> <u>(39)</u>	<u>Debt Service</u> <u>(40)</u>	<u>Permanent</u> <u>(90)</u>
<b>Special And Extraordinary Items</b>					
9920 Special Items – Gains					
9930 Extraordinary Items – Gains					
5520 Special Items – Losses					
5530 Extraordinary Items – Losses					
<b>Net Change In Fund Balances</b>		<b>(\$127,490)</b>	<b>\$17,368,632</b>		
<b>Fund Balance</b>					
0001 Fund Balance - Beginning of Fiscal Year		880,871	2,025,734		
<b>Fund Balance - End Of Year</b>		<b>\$753,381</b>	<b>\$19,394,366</b>		

Amounts Expressed in Whole Dollars	<u>Total Governmental Funds</u>
<b>Special And Extraordinary Items</b>	
9920 Special Items – Gains	
9930 Extraordinary Items – Gains	
5520 Special Items – Losses	
5530 Extraordinary Items – Losses	
<b>Net Change In Fund Balances</b>	<b>\$16,887,807</b>
<b>Fund Balance</b>	
0001 Fund Balance - Beginning of Fiscal Year	1,421,244
<b>Fund Balance - End Of Year</b>	<b>\$18,309,051</b>

Amounts Expressed in Whole Dollars	<u>Food Service</u> <u>(51)</u>	<u>Child Care</u> <u>Operations</u> <u>(52)</u>	<u>Other Enterprise</u> <u>(58)</u>	<u>TOTAL</u>	<u>Internal Service</u> <u>(60)</u>
<b>Assets And Deferred Outflows Of Resources</b>					
<b>Current Assets</b>					
0100 Cash and Cash Equivalents	1,152,820			1,152,820	
0110 Investments					
0130 Due From Other Funds	20,893			20,893	
0141 Due From Other Governments					
0142 State Revenue Receivable					
0143 Federal Revenue Receivable					
0146 Due from Primary Government					
0147 Due from Component Unit					
0150 Other Receivables	12,496			12,496	
0170 Inventories	27,313			27,313	
0180 Prepaid Expenses (Expenditures)					
0190 Other Current Assets					
<b>Total Current Assets</b>	<b>\$1,213,522</b>			<b>\$1,213,522</b>	
<b>Noncurrent Assets</b>					
0211 Land					
0212 Site Improvements (Net)					
0220 Buildings and Building Improvements (Net)					
0230 Machinery, Equipment and Furniture (Net)	13,665			13,665	
0250 Construction in Progress					
0260 Long Term Prepayments					
0290 Other Noncurrent Assets					
<b>Total Noncurrent Assets</b>	<b>\$13,665</b>			<b>\$13,665</b>	
0910 Deferred Outflows of Resources	418,845			418,845	
<b>Total Assets And Deferred Outflows Of Resources</b>	<b>\$1,646,032</b>			<b>\$1,646,032</b>	

Amounts Expressed in Whole Dollars	<u>Food Service</u> <u>(51)</u>	<u>Child Care</u> <u>Operations</u> <u>(52)</u>	<u>Other Enterprise</u> <u>(58)</u>	<u>TOTAL</u>	<u>Internal Service</u> <u>(60)</u>
<b>Liabilities And Deferred Inflows Of Resources And Net Position</b>					
<b>Current Liabilities</b>					
0400 Due to Other Funds	634,743			634,743	
0411 Due to Other Governments					
0413 Due to Component Unit					
0420 Accounts Payable	46,034			46,034	
0430 Contracts Payable					
0440 Current Portion of Long-Term Debt					
0450 Short-Term Payables					
0461 Accrued Salaries and Benefits					
0462 Payroll Deductions and Withholding					
0480 Unearned Revenues					
0490 Other Current Liabilities					
<b>Total Current Liabilities</b>	<b>\$680,777</b>			<b>\$680,777</b>	
<b>Noncurrent Liabilities</b>					
0510 Bonds Payable					
0520 Extended-Term Financing Agreements Payable					
0530 Lease-Purchase Obligations					
0540 Accumulated Compensated Absences	77,560			77,560	
0550 Authority Lease Obligations					
0560 Other Post-Employment Benefits (OPEB)	195,576			195,576	
0570 Net Pension Liability	2,810,000			2,810,000	
0599 Other Noncurrent Liabilities					
<b>Total Noncurrent Liabilities</b>	<b>\$3,083,136</b>			<b>\$3,083,136</b>	
<b>Total Liabilities</b>	<b>\$3,763,913</b>			<b>\$3,763,913</b>	
0950 Deferred Inflows of Resources	299,669			299,669	
<b>Net Position</b>					
0791 Net Investment in Capital Assets	13,665			13,665	
0008 Restricted Net Position (0792 – 0798)					
0799 Unrestricted Net Position	(2,431,215)			(2,431,215)	
<b>Total Net Position</b>	<b>(\$2,417,550)</b>			<b>(\$2,417,550)</b>	
<b>Total Liabilities And Deferred Inflows Of Resources And Net Position</b>	<b>\$1,646,032</b>			<b>\$1,646,032</b>	

Amounts Expressed in Whole Dollars	<u>Food Service</u> <u>(51)</u>	<u>Child Care Operations</u> <u>(52)</u>	<u>Other Enterprise</u> <u>(58)</u>	<u>TOTAL</u>	<u>Internal Service</u> <u>(60)</u>
<b>Operating Revenues</b>					
6600 Food Service Revenue	63,779			63,779	
0071 Charges for Services	3,874			3,874	
0072 Other Operating Revenue					
<b>Total Operating Revenues</b>	<b>\$67,653</b>			<b>\$67,653</b>	
<b>Operating Expenses</b>					
100 Personnel Services – Salaries	848,845			848,845	
200 Personnel Services – Employee Benefits	408,738			408,738	
300 Purchased Professional and Technical Services	3,663			3,663	
400 Purchased Property Services	1,634			1,634	
500 Other Purchased Services	489			489	
600 Supplies	873,305			873,305	
740 Depreciation	6,605			6,605	
810 Dues and Fees	895			895	
880 Refunds of Prior Years' Receipts					
890 Miscellaneous Expenditures					
<b>Total Operating Expenses</b>	<b>\$2,144,174</b>			<b>\$2,144,174</b>	
<b>Operating Income (Loss)</b>	<b>(\$2,076,521)</b>			<b>(\$2,076,521)</b>	
<b>Non Operating Revenues (Expenses)</b>					
6500 Earnings on Investments	128			128	
6920 Contributions and Donations from Private Sources					
6930 Gains or Losses on Sale of Fixed Assets					
6991 Refunds of a Prior Year Expenditure					
7000 Revenue from State Sources	190,450			190,450	
8000 Revenue from Federal Sources	1,725,557			1,725,557	
9990 Insurance Recoveries					
820 Claims and Judgments Against the LEA					
830 Interest					
<b>TOTAL Non Operating Revenues (Expenses)</b>	<b>\$1,916,135</b>			<b>\$1,916,135</b>	
<b>Income (Loss) Before Contributions And Transfers</b>	<b>(\$160,386)</b>			<b>(\$160,386)</b>	

Amounts Expressed in Whole Dollars	<u>Food Service</u> <u>(51)</u>	<u>Child Care Operations</u> <u>(52)</u>	<u>Other Enterprise</u> <u>(58)</u>	<u>TOTAL</u>	<u>Internal Service</u> <u>(60)</u>
<b>Contributions, Transfers, and Special and Extraordinary Items</b>					
5200 Interfund Transfers – Out					
5300 Transfers Out to Component Units/Primary Governments					
5520 Special Items – Losses					
5530 Extraordinary Items – Losses					
9300 Interfund Transfers - IN	95,424			95,424	
9500 Capital Contributions					
9700 Transfers IN From Component Units/Primary Governments					
9920 Special Items – Gains					
9930 Extraordinary Items – Gains					
<b>Change In Net Position</b>	<b>(\$64,962)</b>			<b>(\$64,962)</b>	
0002 Net Position - Beginning of Fiscal Year	(2,352,588)			(2,352,588)	
0003 Accounting Changes / Residual Equity Transfers					
<b>Net Position - End Of Year</b>	<b>(\$2,417,550)</b>			<b>(\$2,417,550)</b>	

Amounts Expressed in Whole Dollars	<u>Food Service</u> <u>(51)</u>	<u>Child Care Operations</u> <u>(52)</u>	<u>Other Enterprise</u> <u>(58)</u>	<u>TOTAL</u>	<u>Internal Service(60)</u>
<b>Cash Flows From Operating Activities</b>					
0011 Cash Receipts From Users	67,652			67,652	
0012 Cash Receipts From Assessments Made to Other Funds					
0013 Cash Receipts From Earnings on Investments					
0014 Cash Receipts From Other Operating Revenue					
0015 Cash Payments To Employees For Services	1,371,191			1,371,191	
0016 Cash Payments For Insurance Claims					
0017 Cash Payments To Suppliers For Goods and Services	281,185			281,185	
0018 Cash Payments For Other Operating Expenses					
<b>Net Cash Provided By (Used For) Operating Activities</b>	<b>(\$1,584,724)</b>			<b>(\$1,584,724)</b>	
<b>Cash Flows From Non-Capital Financing Activities</b>					
0021 Receipts From Local Sources - 6000	95,424			95,424	
0022 Receipts From State Sources - 7000	190,450			190,450	
0023 Receipts From Federal Sources -8000	1,704,664			1,704,664	
0024 Notes and Loans Received (Repaid)					
0025 Interest Paid on Notes/Loans - 5100-830					
0026 Operating Transfers In (Out)/Residual Equity Trans					
0027 Operating Transfers In (Out) Primary Government / Comp Unit					
0028 Receipts From Refund of Prior Year Expenditures - 6991					
0029 Special and Extraordinary Gains (losses)					
0030 Receipts from Insurance Recoveries -9990					
<b>Net Cash Prov By (Used for) Non-Capital Financing Activities</b>	<b>\$1,990,538</b>			<b>\$1,990,538</b>	
<b>Cash Flows From Capital and Related Financing Activities</b>					
0031 Payments For Fac Acq, Const, and Imp - 4000					
0032 Gain / (Loss) on Sale of Fixed Assets - 6930	(20,272)			(20,272)	
0033 Proceeds From Extended Term Financing - 9200					
0034 Principal Paid on Financing Agreements					
0035 Interest Paid on Financing Agreements - 5100-830					
0036 (Inc) Dec in Contributed Capital					
<b>Net Cash Prov By (Used for) Capital and Related Financing Activities</b>	<b>(\$20,272)</b>			<b>(\$20,272)</b>	
<b>Cash Flows From Investing Activities</b>					
0041 Earnings on Investments - 6500	128			128	
0042 Purchase of Inv Securities / Deposits to Inv Pools					
0043 Receipts From Investment Pool Withdrawals					
0044 Proceeds from Sale and Maturity of Inv Securities					



LEA : 124151902 Coatesville Area SD

Printed 3/31/2022 2:27:47 PM

0045 Loans Received (Paid)

<b>Net Cash Prov By (Used for) Investing Activities</b>	<b>\$128</b>	<b>\$128</b>
---------------------------------------------------------	--------------	--------------

	<u>Food Service</u> <u>(51)</u>	<u>Child Care Operations</u> <u>(52)</u>	<u>Other Enterprise</u> <u>(58)</u>	<u>TOTAL</u>	<u>Internal Service</u> <u>(60)</u>
<b>Net Increase (Decrease) in Cash Flows</b>	<b>385,670</b>			<b>385,670</b>	
0004 Cash and Cash Equivalents Beginning of Year	767,150			767,150	
<b>Cash and Cash Equivalents at Year End</b>	<b>\$1,152,820</b>			<b>\$1,152,820</b>	

**Reconciliation of Operating Income (Loss) To Net Cash Provided by (Used For) Operating Activities**

0005 Operating Income (Loss) per REP	(2,076,521)			(2,076,521)	
<b>Adjustments</b>					
0051 Depreciation and Net Amortization	6,605			6,605	
0052 Provision for Uncollectible Accounts					
0053 Other Adjustments	485,195			485,195	
<b>Effect of Changes in Assets, Liabilities, Deferred Outflows and Deferred Inflows</b>					
0054 (Inc) Dec In Accounts Receivable (0120-0150)					
0055 Advances to Other Funds (0160)					
0056 (Inc) Dec in Inventories (0170)					
0057 (Inc) Dec in Prepaid Expenses (0180)					
0058 (Inc) Dec in Other Current or Noncurrent Assets					
0064 Deferred Outflows (0910)					
0059 Inc (Dec) in Accounts Payable (0400-0450)					
0060 Inc (Dec) in Accrued Salaries/Benefits (0461)					
0065 Inc (Dec) in Net Pension Liabilities (0570)					
0066 Inc (Dec) in Other Postemp Benefit Oblig (0560)					
0061 Inc (Dec) in Payroll Deductions/Withholding (0462)					
0062 Inc (Dec) in Unearned Revenue (0480)					
0063 Inc (Dec) in Other Current or Noncurrent Liabilities					
0067 Deferred Inflows (0950)					
<b>Total Adjustments</b>	<b>\$491,800</b>			<b>\$491,800</b>	
<b>Cash Provided By (Used for) Total</b>	<b>(\$1,584,721)</b>			<b>(\$1,584,721)</b>	

COMBINED STATEMENT OF CASH FLOWS  
SCHEDULE OF NONCASH INVESTING, CAPITAL, AND FINANCING ACTIVITIES

Explanation of Transaction and Balance Sheet Effect	Amount
<b>Total</b>	

LEA : 124151902 Coatesville Area SD

Printed 3/31/2022 2:27:48 PM

Amounts Expressed in Whole Dollars

	<u>Private Purpose Trust</u> (71)	<u>Investment Trust</u> (72)	<u>Pension Trust</u> (73)	<u>Student Activity Custodial</u> (81)
<b>Assets And Deferred Outflows Of Resources</b>				
<b>Assets</b>				
0100 Cash and Cash Equivalents	183,460			263,100
0110 Investments				
0130 Due From Other Funds				
0140 Due from Other Governments, Primary Government and Component Units				
0150 Other Receivables				
0170 Inventories				
0180 Prepaid Expenses (Expenditures)				
0190 Other Current Assets				
0220 Buildings and Building Improvements (Net)				
0230 Machinery, Equipment and Furniture (Net)				
<b>Total Assets</b>	<b>\$183,460</b>			<b>\$263,100</b>
0910 Deferred Outflows of Resources				
<b>Total Assets And Deferred Outflows Of Resources</b>	<b>\$183,460</b>			<b>\$263,100</b>

LEA : 124151902 Coatesville Area SD

Printed 3/31/2022 2:27:48 PM

Amounts Expressed in Whole Dollars

Other Custodial      Fiduciary Component Units      Total Fiduciary Funds  
(89)                                      (98)

**Assets And Deferred Outflows Of Resources**

**Assets**

0100 Cash and Cash Equivalents			446,560
0110 Investments			
0130 Due From Other Funds			
0140 Due from Other Governments, Primary Government and Component Units			
0150 Other Receivables			
0170 Inventories			
0180 Prepaid Expenses (Expenditures)			
0190 Other Current Assets			
0220 Buildings and Building Improvements (Net)			
0230 Machinery, Equipment and Furniture (Net)			

**Total Assets** **\$446,560**

0910 Deferred Outflows of Resources

**Total Assets And Deferred Outflows Of Resources** **\$446,560**

LEA : 124151902 Coatesville Area SD

Printed 3/31/2022 2:27:48 PM

Amounts Expressed in Whole Dollars	<u>Private Purpose Trust</u> (71)	<u>Investment Trust</u> (72)	<u>Pension Trust</u> (73)	<u>Student Activity Custodial</u> (81)
<b>Liabilities, Deferred Inflows Of Resources And Net Position</b>				
<b>Liabilities</b>				
0400 Due to Other Funds	4,700			530
0410 Due to Other Governments, Primary Government and Component Units				
0420 Accounts Payable	3,535			1,621
0430 Contracts Payable				
0450 Short-Term Payables				
0460 Payroll Accruals and Withholdings				
0480 Unearned Revenues				
0490 Other Current Liabilities				
<b>Total Liabilities</b>	<b>\$8,235</b>			<b>\$2,151</b>
0950 Deferred Inflows of Resources				
<b>Net Position</b>				
0791 Net Investment in Capital Assets				
0009 Restricted Net Position (0792 – 0798)	175,225			260,949
0799 Unrestricted Net Position				
<b>Total Net Position</b>	<b>\$175,225</b>			<b>\$260,949</b>
<b>Total Liabilities, Deferred Inflows Of Resources And Net Position</b>	<b>\$183,460</b>			<b>\$263,100</b>

LEA : 124151902 Coatesville Area SD

Printed 3/31/2022 2:27:48 PM

Amounts Expressed in Whole Dollars	<u>Other Custodial</u> <u>(89)</u>	<u>Fiduciary Component Units</u> <u>(98)</u>	<u>Total Fiduciary Funds</u>
<b>Liabilities, Deferred Inflows Of Resources And Net Position</b>			
<b>Liabilities</b>			
0400 Due to Other Funds			5,230
0410 Due to Other Governments, Primary Government and Component Units			
0420 Accounts Payable			5,156
0430 Contracts Payable			
0450 Short-Term Payables			
0460 Payroll Accruals and Withholdings			
0480 Unearned Revenues			
0490 Other Current Liabilities			
<b>Total Liabilities</b>			<b>\$10,386</b>
0950 Deferred Inflows of Resources			
<b>Net Position</b>			
0791 Net Investment in Capital Assets			
0009 Restricted Net Position (0792 – 0798)			436,174
0799 Unrestricted Net Position			
<b>Total Net Position</b>			<b>\$436,174</b>
<b>Total Liabilities, Deferred Inflows Of Resources And Net Position</b>			<b>\$446,560</b>

Amounts Expressed in Whole Dollars	<u>Private Purpose Trust</u> <u>(71)</u>	<u>Investment Trust</u> <u>(72)</u>	<u>Pension Trust</u> <u>(73)</u>	<u>Student Activity</u> <u>Custodial</u> <u>(81)</u>	<u>Other Custodial</u> <u>(89)</u>	<u>Fiduciary Component</u> <u>Units</u> <u>(98)</u>
<b>Additions</b>						
0091 Gifts and Contributions				135,004		
0095 Net Investment Earnings	18					
0092 Other Additions						
<b>Deductions</b>						
0093 Scholarships Awarded	7,200					
0094 Other Deductions				162,098		
<b>Change In Net Position</b>	<b>(\$7,182)</b>			<b>(\$27,094)</b>		
0006 Net Position – Beginning of Fiscal Year	182,407			288,043		
0007 Net Position Held in Trust for Pension Benefits						
<b>Net Position - End of Fiscal Year</b>	<b>\$175,225</b>			<b>\$260,949</b>		



Amounts Expressed in Whole Dollars	<u>Total Fiduciary Funds</u>
<b>Additions</b>	
0091 Gifts and Contributions	135,004
0095 Net Investment Earnings	18
0092 Other Additions	
<b>Deductions</b>	
0093 Scholarships Awarded	7,200
0094 Other Deductions	162,098
<b>Change In Net Position</b>	<b>(\$34,276)</b>
0006 Net Position – Beginning of Fiscal Year	470,450
0007 Net Position Held in Trust for Pension Benefits	
<b>Net Position - End of Fiscal Year</b>	<b>\$436,174</b>

	<u>Revenue Reported In Current Year</u>	<u>Current Year Tax Accrual</u>	<u>Prior Year Tax Accrual</u>	<u>Taxes Collected In Current Year</u>
<b><u>Revenue from Local Sources</u></b>				
6111 Current Real Estate Taxes	102,732,533.23			102,732,533.23
6112 Interim Real Estate Taxes	969,085.18			969,085.18
6113 Public Utility Realty Taxes	110,481.34			110,481.34
6114 Payments in Lieu of Current Taxes - State / Local	234.10			234.10
6143 Current Act 511 Local Services Taxes	77,913.39			77,913.39
6151 Current Act 511 Earned Income Taxes	9,149,615.89			9,149,615.89
6153 Current Act 511 Real Estate Transfer Taxes	2,252,395.73			2,252,395.73
6411 Delinquent Real Estate Taxes	4,042,625.19			4,042,625.19
6500 Earnings on Investments	44,451.42			
6700 Revenues from LEA Activities	1,628.10			
6831 Federal Revenue Received from Other Pennsylvania Public LEAs	838,348.74			
6832 Federal IDEA Revenue Received as Pass Through	1,256,057.65			
6910 Rentals	243,457.92			
6920 Contributions and Donations from Private Sources	37,148.38			
6941 Regular Day School Tuition	14,167.80			
6949 Other Tuition from Patrons	296,632.97			
6991 Refunds of a Prior Year Expenditure	15,968.08			
6999 Other Revenues Not Specified Above	107,464.42			
<b>TOTAL Revenue from Local Sources</b>	<b>\$122,190,209.53</b>			<b>\$119,334,884.05</b>

**Revenue Reported  
In Current Year**

**Revenue from State Sources**

7111 Basic Education Funding-Formula	25,838,020.08		
7112 Basic Education Funding-Social Security	1,656,712.93		
7160 Tuition for Orphans Subsidy	71,026.14		
7271 Special Education funds for School-Aged Pupils	5,613,075.58		
7311 Pupil Transportation Subsidy	5,490,212.73		
7312 Nonpublic and Charter School Pupil Transportation Subsidy	1,460,305.00		
7320 Rental and Sinking Fund Payments / Building Reimbursement Subsidy	192,117.97		
7330 Health Services (Medical, Dental, Nurse, Act 25)	104,216.11		
7340 State Property Tax Reduction Allocation	3,934,590.10		
7361 School Safety and Security Grants	44,967.62		
7369 Other Safe School Grants	137,750.00		
7505 Ready to Learn Block Grant	1,103,925.00		
7506 PAsmart Grants	27,222.24		
7820 State Share of Retirement Contributions	7,135,631.89		
<b>TOTAL Revenue from State Sources</b>	<b>\$52,809,773.39</b>		

**Revenue Reported  
In Current Year**

**Revenue from Federal Sources**

8514 NCLB, Title I - Improving the Academic Achievement of the Disadvantaged	1,408,200.15		
8515 NCLB, Title II - Preparing, Training and Recruiting High Quality Teachers and Principals	16,598.72		
8516 NCLB, Title III - Language Instruction for Limited English Proficient and Immigrant Students	64,355.19		
8517 NCLB, Title IV - 21St Century Schools	119,755.16		
8741 Elementary and Secondary School Emergency Relief Fund (ESSER)	1,467,732.40		
8742 Governor's Emergency Education Relief Fund (GEER)	141,448.69		
8743 ESSER II - Elementary and Secondary School Emergency Relief Fund	995,241.00		
8749 Other CARES Act Funding	340,426.22		
8810 School-Based Access Medicaid Reimbursement Program (SBAP) Reimbursements (Access)	384,912.52		
8820 Medical Assistance Reimbursement for Administrative Claiming (Quarterly) Program	53,928.07		
<b>TOTAL Revenue from Federal Sources</b>	<b>\$4,992,598.12</b>		

**Revenue Reported  
In Current Year**

**Other Financing Sources**

9130 Bond Premiums	63,277.20		
9990 Insurance Recoveries	243,564.62		
<b>TOTAL Other Financing Sources</b>	<b>\$306,841.82</b>		
<b>TOTAL FROM ALL SOURCES</b>	<b>\$180,299,422.86</b>		<b>\$119,334,884.05</b>

LEA : 124151902 Coatesville Area SD

Printed 3/31/2022 2:27:52 PM

	<u>General Fund (10)</u>	<u>Student Sponsored Activity Fund (21)</u>	<u>Public Purpose Trust (27)</u>	<u>Other Compt Approved (28)</u>	<u>Athletic / Activity (29)</u>	<u>Capital Reserve (690, 1850) (31)</u>
<b>6000 Revenue from Local Sources</b>						
6111 Current Real Estate Taxes	102,732,533.23					
6112 Interim Real Estate Taxes	969,085.18					
6113 Public Utility Realty Taxes	110,481.34					
6114 Payments in Lieu of Current Taxes - State / Local	234.10					
6143 Current Act 511 Local Services Taxes	77,913.39					
6151 Current Act 511 Earned Income Taxes	9,149,615.89					
6153 Current Act 511 Real Estate Transfer Taxes	2,252,395.73					
6411 Delinquent Real Estate Taxes	4,042,625.19					
6500 Earnings on Investments	44,451.42					
6700 Revenues from LEA Activities	1,628.10					
6831 Federal Revenue Received from Other Pennsylvania Public LEAs	838,348.74					
6832 Federal IDEA Revenue Received as Pass Through	1,256,057.65					
6910 Rentals	243,457.92					
6920 Contributions and Donations from Private Sources	37,148.38					
6941 Regular Day School Tuition	14,167.80					
6949 Other Tuition from Patrons	296,632.97					
6991 Refunds of a Prior Year Expenditure	15,968.08					
6999 Other Revenues Not Specified Above	107,464.42					
<b>6000 Total Revenue from Local Sources</b>	<b>\$122,190,209.53</b>					
<b>7000 Revenue from State Sources</b>						
7111 Basic Education Funding-Formula	25,838,020.08					
7112 Basic Education Funding-Social Security	1,656,712.93					
7160 Tuition for Orphans Subsidy	71,026.14					
7271 Special Education funds for School-Aged Pupils	5,613,075.58					
7311 Pupil Transportation Subsidy	5,490,212.73					
7312 Nonpublic and Charter School Pupil Transportation Subsidy	1,460,305.00					
7320 Rental and Sinking Fund Payments / Building Reimbursement Subsidy	192,117.97					
7330 Health Services (Medical, Dental, Nurse, Act 25)	104,216.11					
7340 State Property Tax Reduction Allocation	3,934,590.10					
7361 School Safety and Security Grants	44,967.62					
7369 Other Safe School Grants	137,750.00					
7505 Ready to Learn Block Grant	1,103,925.00					
7506 PAsmart Grants	27,222.24					
7820 State Share of Retirement Contributions	7,135,631.89					
<b>7000 Total Revenue from State Sources</b>	<b>\$52,809,773.39</b>					

LEA : 124151902 Coatesville Area SD

Printed 3/31/2022 2:27:52 PM

	<u>Capital Reserve</u> <u>(1431) (32)</u>	<u>Other Capital</u> <u>Projects Fund (39)</u>	<u>Debt Service (40)</u>	<u>Permanent (90)</u>	<u>Total</u>
<b>6000 Revenue from Local Sources</b>					
6111 Current Real Estate Taxes					102,732,533.23
6112 Interim Real Estate Taxes					969,085.18
6113 Public Utility Realty Taxes					110,481.34
6114 Payments in Lieu of Current Taxes - State / Local					234.10
6143 Current Act 511 Local Services Taxes					77,913.39
6151 Current Act 511 Earned Income Taxes					9,149,615.89
6153 Current Act 511 Real Estate Transfer Taxes					2,252,395.73
6411 Delinquent Real Estate Taxes					4,042,625.19
6500 Earnings on Investments	81.74	6,881.10			51,414.26
6700 Revenues from LEA Activities					1,628.10
6831 Federal Revenue Received from Other Pennsylvania Public LEAs					838,348.74
6832 Federal IDEA Revenue Received as Pass Through					1,256,057.65
6910 Rentals					243,457.92
6920 Contributions and Donations from Private Sources					37,148.38
6941 Regular Day School Tuition					14,167.80
6949 Other Tuition from Patrons					296,632.97
6991 Refunds of a Prior Year Expenditure					15,968.08
6999 Other Revenues Not Specified Above					107,464.42
<b>6000 Total Revenue from Local Sources</b>	<b>\$81.74</b>	<b>\$6,881.10</b>			<b>\$122,197,172.37</b>
<b>7000 Revenue from State Sources</b>					
7111 Basic Education Funding-Formula					25,838,020.08
7112 Basic Education Funding-Social Security					1,656,712.93
7160 Tuition for Orphans Subsidy					71,026.14
7271 Special Education funds for School-Aged Pupils					5,613,075.58
7311 Pupil Transportation Subsidy					5,490,212.73
7312 Nonpublic and Charter School Pupil Transportation Subsidy					1,460,305.00
7320 Rental and Sinking Fund Payments / Building Reimbursement Subsidy					192,117.97
7330 Health Services (Medical, Dental, Nurse, Act 25)					104,216.11
7340 State Property Tax Reduction Allocation					3,934,590.10
7361 School Safety and Security Grants					44,967.62
7369 Other Safe School Grants					137,750.00
7505 Ready to Learn Block Grant					1,103,925.00
7506 PAsmart Grants					27,222.24
7820 State Share of Retirement Contributions					7,135,631.89
<b>7000 Total Revenue from State Sources</b>					<b>\$52,809,773.39</b>

LEA : 124151902 Coatesville Area SD

Printed 3/31/2022 2:27:52 PM

	<u>General Fund (10)</u>	<u>Student Sponsored Activity Fund (21)</u>	<u>Public Purpose Trust (27)</u>	<u>Other Compt Approved (28)</u>	<u>Athletic / Activity (29)</u>	<u>Capital Reserve (690, 1850) (31)</u>
<b>8000 Revenue from Federal Sources</b>						
8514 NCLB, Title I - Improving the Academic Achievement of the Disadvantaged	1,408,200.15					
8515 NCLB, Title II - Preparing, Training and Recruiting High Quality Teachers and Principals	16,598.72					
8516 NCLB, Title III - Language Instruction for Limited English Proficient and Immigrant Students	64,355.19					
8517 NCLB, Title IV - 21st Century Schools	119,755.16					
8741 Elementary and Secondary School Emergency Relief Fund (ESSER)	1,467,732.40					
8742 Governor's Emergency Education Relief Fund (GEER)	141,448.69					
8743 ESSER II - Elementary and Secondary School Emergency Relief Fund	995,241.00					
8749 Other CARES Act Funding	340,426.22					
8810 School-Based Access Medicaid Reimbursement Program (SBAP) Reimbursements (Access)	384,912.52					
8820 Medical Assistance Reimbursement for Administrative Claiming (Quarterly) Program	53,928.07					
<b>8000 Total Revenue from Federal Sources</b>	<b>\$4,992,598.12</b>					
<b>9000 Other Financing Sources</b>						
9110 Face Value of Bonds Issued						
9120 Proceeds from Refunding of Bonds						
9130 Bond Premiums	63,277.20					
9990 Insurance Recoveries	243,564.62					
<b>9000 Total Other Financing Sources</b>	<b>\$306,841.82</b>					
<b>Total From All Sources</b>	<b>\$180,299,422.86</b>					



LEA : 124151902 Coatesville Area SD

Printed 3/31/2022 2:27:52 PM

	<u>Capital Reserve</u> <u>(1431) (32)</u>	<u>Other Capital</u> <u>Projects Fund (39)</u>	<u>Debt Service (40)</u>	<u>Permanent (90)</u>	<u>Total</u>
<b>8000 Revenue from Federal Sources</b>					
8514 NCLB, Title I - Improving the Academic Achievement of the Disadvantaged					1,408,200.15
8515 NCLB, Title II - Preparing, Training and Recruiting High Quality Teachers and Principals					16,598.72
8516 NCLB, Title III - Language Instruction for Limited English Proficient and Immigrant Students					64,355.19
8517 NCLB, Title IV - 21st Century Schools					119,755.16
8741 Elementary and Secondary School Emergency Relief Fund (ESSER)					1,467,732.40
8742 Governor's Emergency Education Relief Fund (GEER)					141,448.69
8743 ESSER II - Elementary and Secondary School Emergency Relief Fund					995,241.00
8749 Other CARES Act Funding					340,426.22
8810 School-Based Access Medicaid Reimbursement Program (SBAP) Reimbursements (Access)					384,912.52
8820 Medical Assistance Reimbursement for Administrative Claiming (Quarterly) Program					53,928.07
<b>8000 Total Revenue from Federal Sources</b>					<b>\$4,992,598.12</b>
<b>9000 Other Financing Sources</b>					
9110 Face Value of Bonds Issued		21,050,075.00			21,050,075.00
9120 Proceeds from Refunding of Bonds		81,276,706.44			81,276,706.44
9130 Bond Premiums					63,277.20
9990 Insurance Recoveries					243,564.62
<b>9000 Total Other Financing Sources</b>		<b>\$102,326,781.44</b>			<b>\$102,633,623.26</b>
<b>Total From All Sources</b>	<b>\$81.74</b>	<b>\$102,333,662.54</b>			<b>\$282,633,167.14</b>

	<u>General Fund (10)</u>	<u>Student Sponsored Activity Fund (21)</u>	<u>Public Purpose Trust (27)</u>	<u>Other Compt Approved (28)</u>	<u>Athletic / Activity (29)</u>	<u>Capital Reserve (690. 1850) (31)</u>
Revenue from Local Sources	122,190,209.53					
Revenue from State Sources	52,809,773.39					
Revenue from Federal Sources	4,992,598.12					
Other Financing Sources	306,841.82					
<b>Total From All Sources</b>	<b>\$180,299,422.86</b>					

	<u>Capital Reserve (1431)</u> <u>(32)</u>	<u>Other Capital Projects</u> <u>Fund (39)</u>	<u>Debt Service (40)</u>	<u>Permanent (90)</u>	<u>Total</u>
Revenue from Local Sources	81.74	6,881.10			122,197,172.37
Revenue from State Sources					52,809,773.39
Revenue from Federal Sources					4,992,598.12
Other Financing Sources		102,326,781.44			102,633,623.26
<b>Total From All Sources</b>	<b>\$81.74</b>	<b>\$102,333,662.54</b>			<b>\$282,633,167.14</b>

General Fund (10)

		<u>Total</u>
<b>1000 Instruction</b>		
<b>100 Personnel Services – Salaries</b>		
100 Personnel Services – Salaries		28,446,631.07
<b>Total Personnel Services – Salaries</b>		<b>\$28,446,631.07</b>
<b>200 Personnel Services – Employee Benefits</b>		
210 Group Insurance – Contracted Provider		82,063.07
220 Social Security Contributions		2,105,617.50
230 PSERS Retirement Contributions		9,781,533.37
250 Unemployment Compensation		35,896.56
260 Workers' Compensation		257,166.54
270 Group Insurance – Self-Insurance		6,164,112.58
292 Health Savings Accounts		19,800.00
<b>Total Personnel Services – Employee Benefits</b>		<b>\$18,446,189.62</b>
<b>300 Purchased Professional and Technical Services</b>		
322 Professional Educational Services – Ius		13,177,581.53
323 Professional Educational Services – Other Educational Agencies		32,021.10
329 Professional Educational Services – Other		6,407,392.14
330 Other Professional Services		130,783.66
340 Technical Services		475.00
360 Employee Training and Development Services		68,091.00
390 Other Purchased Professional and Technical Services		12,937.50
<b>Total Purchased Professional and Technical Services</b>		<b>\$19,829,281.93</b>
<b>500 Other Purchased Services</b>		
510 Student Transportation Services		830.79
550 Printing and Binding		892.25
561 Tuition To Other School Districts Within the State		323,322.61
562 Tuition To Pennsylvania Charter Schools		60,542,664.52
563 Tuition To Nonpublic Schools		2,354.10
564 Tuition To Career and Technology Centers		3,633,510.00
566 Tuition To Institutions of Higher Education and Technical Institutes		150,660.00
567 Tuition To Approved Private Schools (APS) and PA Chartered Schools for the Deaf and Blind		2,942,135.76
568 Tuition To Private Residential Rehabilitative Institutions (PRRI) [In-State] and Detention Centers		93,943.44
594 IU Payment By Withholding for Institutionalized Children's Programs – Special Classes		746.53
<b>Total Other Purchased Services</b>		<b>\$67,691,060.00</b>
<b>600 Supplies</b>		
610 General Supplies		266,211.95
630 Food		995.85
640 Books and Periodicals		162,223.28
650 Supplies & Fees – Technology Related		1,137,209.67
<b>Total Supplies</b>		<b>\$1,566,640.75</b>
<b>700 Property</b>		
758 Capitalized Technology Software - Original		66,666.67
762 Capitalized Equipment - Replacement		1,822.50
<b>Total Property</b>		<b>\$68,489.17</b>

LEA : 124151902 Coatesville Area SD

Printed 3/31/2022 2:27:57 PM

General Fund (10)

<b>1000 Instruction</b>	<b><u>Total</u></b>
<b>800 Other Objects</b>	
810 Dues and Fees	811.00
890 Miscellaneous Expenditures	750.00
<b>Total Other Objects</b>	<b>\$1,561.00</b>
<b>Total 1000 Instruction</b>	<b>\$136,049,853.54</b>

**General Fund (10)**

**1100 Regular Programs – Elementary / Secondary**

	<u>Elementary</u>	<u>Secondary</u>	<u>Federal</u>	<u>Total</u>
<b>100 Personnel Services – Salaries</b>				
100 Personnel Services – Salaries	12,388,612.77	10,085,312.39	855,007.66	23,328,932.82
<b>Total Personnel Services – Salaries</b>	<b>\$12,388,612.77</b>	<b>\$10,085,312.39</b>	<b>\$855,007.66</b>	<b>\$23,328,932.82</b>
<b>200 Personnel Services – Employee Benefits</b>				
210 Group Insurance – Contracted Provider	29,801.78	35,327.43	1,667.65	66,796.86
220 Social Security Contributions	777,849.20	883,936.61	63,136.86	1,724,922.67
230 PSERS Retirement Contributions	4,255,044.86	3,472,980.36	293,022.29	8,021,047.51
250 Unemployment Compensation	15,198.06	11,250.82	811.52	27,260.40
260 Workers' Compensation	111,998.11	91,174.54	7,729.94	210,902.59
270 Group Insurance – Self-Insurance	2,240,400.02	2,727,998.40	152,023.85	5,120,422.27
292 Health Savings Accounts	1,800.00	900.00		2,700.00
<b>Total Personnel Services – Employee Benefits</b>	<b>\$7,432,092.03</b>	<b>\$7,223,568.16</b>	<b>\$518,392.11</b>	<b>\$15,174,052.30</b>
<b>300 Purchased Professional and Technical Services</b>				
322 Professional Educational Services – Ius	167,298.50	377,980.30	84,816.94	630,095.74
323 Professional Educational Services – Other Educational Agencies	2,784.00	1,350.00		4,134.00
329 Professional Educational Services – Other	156,568.33	149,245.32		305,813.65
330 Other Professional Services	10,811.30	10,811.30	64,561.27	86,183.87
390 Other Purchased Professional and Technical Services			12,937.50	12,937.50
<b>Total Purchased Professional and Technical Services</b>	<b>\$337,462.13</b>	<b>\$539,386.92</b>	<b>\$162,315.71</b>	<b>\$1,039,164.76</b>
<b>500 Other Purchased Services</b>				
510 Student Transportation Services	415.40	415.39		830.79
550 Printing and Binding	892.25			892.25
561 Tuition To Other School Districts Within the State	726.48	726.48		1,452.96
562 Tuition To Pennsylvania Charter Schools	20,024,464.33	20,024,464.33		40,048,928.66
566 Tuition To Institutions of Higher Education and Technical Institutes		150,660.00		150,660.00
568 Tuition To Private Residential Rehabilitative Institutions (PRRI) [In-State] and Detention Centers	46,971.72	46,971.72		93,943.44
<b>Total Other Purchased Services</b>	<b>\$20,073,470.18</b>	<b>\$20,223,237.92</b>		<b>\$40,296,708.10</b>
<b>600 Supplies</b>				
610 General Supplies	108,583.81	74,399.42	63,416.50	246,399.73
630 Food			995.85	995.85
640 Books and Periodicals	60,653.89	62,134.09	39,435.30	162,223.28
650 Supplies & Fees – Technology Related	9,464.05	7,242.80	735,785.38	752,492.23
<b>Total Supplies</b>	<b>\$178,701.75</b>	<b>\$143,776.31</b>	<b>\$839,633.03</b>	<b>\$1,162,111.09</b>
<b>700 Property</b>				
758 Capitalized Technology Software - Original			66,666.67	66,666.67
762 Capitalized Equipment - Replacement		1,822.50		1,822.50
<b>Total Property</b>		<b>\$1,822.50</b>	<b>\$66,666.67</b>	<b>\$68,489.17</b>
<b>800 Other Objects</b>				
810 Dues and Fees		811.00		811.00
890 Miscellaneous Expenditures		750.00		750.00
<b>Total Other Objects</b>		<b>\$1,561.00</b>		<b>\$1,561.00</b>
<b>Total 1100 Regular Programs – Elementary / Secondary</b>	<b>\$40,410,338.86</b>	<b>\$38,218,665.20</b>	<b>\$2,442,015.18</b>	<b>\$81,071,019.24</b>

**General Fund (10)**

**1110 Regular Programs**

	<u>Elementary</u>	<u>Secondary</u>	<u>Federal</u>	<u>Total</u>
<b>100 Personnel Services – Salaries</b>				
100 Personnel Services – Salaries	12,388,612.77	10,085,312.39		22,473,925.16
<b>Total Personnel Services – Salaries</b>	<b>\$12,388,612.77</b>	<b>\$10,085,312.39</b>		<b>\$22,473,925.16</b>
<b>200 Personnel Services – Employee Benefits</b>				
210 Group Insurance – Contracted Provider	29,801.78	35,327.43		65,129.21
220 Social Security Contributions	777,849.20	883,936.61		1,661,785.81
230 PSERS Retirement Contributions	4,255,044.86	3,472,980.36		7,728,025.22
250 Unemployment Compensation	15,198.06	11,250.82		26,448.88
260 Workers' Compensation	111,998.11	91,174.54		203,172.65
270 Group Insurance – Self-Insurance	2,240,400.02	2,727,998.40		4,968,398.42
292 Health Savings Accounts	1,800.00	900.00		2,700.00
<b>Total Personnel Services – Employee Benefits</b>	<b>\$7,432,092.03</b>	<b>\$7,223,568.16</b>		<b>\$14,655,660.19</b>
<b>300 Purchased Professional and Technical Services</b>				
322 Professional Educational Services – Ius	167,298.50	377,980.30		545,278.80
323 Professional Educational Services – Other Educational Agencies	2,784.00	1,350.00		4,134.00
329 Professional Educational Services – Other	156,568.33	149,245.32		305,813.65
330 Other Professional Services	10,811.30	10,811.30		21,622.60
<b>Total Purchased Professional and Technical Services</b>	<b>\$337,462.13</b>	<b>\$539,386.92</b>		<b>\$876,849.05</b>
<b>500 Other Purchased Services</b>				
510 Student Transportation Services	415.40	415.39		830.79
550 Printing and Binding	892.25			892.25
561 Tuition To Other School Districts Within the State	726.48	726.48		1,452.96
562 Tuition To Pennsylvania Charter Schools	20,024,464.33	20,024,464.33		40,048,928.66
566 Tuition To Institutions of Higher Education and Technical Institutes		150,660.00		150,660.00
568 Tuition To Private Residential Rehabilitative Institutions (PRRI) [In-State] and Detention Centers	46,971.72	46,971.72		93,943.44
<b>Total Other Purchased Services</b>	<b>\$20,073,470.18</b>	<b>\$20,223,237.92</b>		<b>\$40,296,708.10</b>
<b>600 Supplies</b>				
610 General Supplies	108,583.81	74,399.42		182,983.23
640 Books and Periodicals	60,653.89	62,134.09		122,787.98
650 Supplies & Fees – Technology Related	9,464.05	7,242.80		16,706.85
<b>Total Supplies</b>	<b>\$178,701.75</b>	<b>\$143,776.31</b>		<b>\$322,478.06</b>
<b>700 Property</b>				
762 Capitalized Equipment - Replacement		1,822.50		1,822.50
<b>Total Property</b>		<b>\$1,822.50</b>		<b>\$1,822.50</b>
<b>800 Other Objects</b>				
810 Dues and Fees		811.00		811.00
890 Miscellaneous Expenditures		750.00		750.00
<b>Total Other Objects</b>		<b>\$1,561.00</b>		<b>\$1,561.00</b>
<b>Total 1110 Regular Programs</b>	<b>\$40,410,338.86</b>	<b>\$38,218,665.20</b>		<b>\$78,629,004.06</b>

**General Fund (10)**

**1190 Federally-Funded Regular Programs**

	<u>Elementary</u>	<u>Secondary</u>	<u>Federal</u>	<u>Total</u>
<b>100 Personnel Services – Salaries</b>				
100 Personnel Services – Salaries			855,007.66	855,007.66
<b>Total Personnel Services – Salaries</b>			<b>\$855,007.66</b>	<b>\$855,007.66</b>
<b>200 Personnel Services – Employee Benefits</b>				
210 Group Insurance – Contracted Provider			1,667.65	1,667.65
220 Social Security Contributions			63,136.86	63,136.86
230 PSERS Retirement Contributions			293,022.29	293,022.29
250 Unemployment Compensation			811.52	811.52
260 Workers' Compensation			7,729.94	7,729.94
270 Group Insurance – Self-Insurance			152,023.85	152,023.85
<b>Total Personnel Services – Employee Benefits</b>			<b>\$518,392.11</b>	<b>\$518,392.11</b>
<b>300 Purchased Professional and Technical Services</b>				
322 Professional Educational Services – Ius			84,816.94	84,816.94
330 Other Professional Services			64,561.27	64,561.27
390 Other Purchased Professional and Technical Services			12,937.50	12,937.50
<b>Total Purchased Professional and Technical Services</b>			<b>\$162,315.71</b>	<b>\$162,315.71</b>
<b>600 Supplies</b>				
610 General Supplies			63,416.50	63,416.50
630 Food			995.85	995.85
640 Books and Periodicals			39,435.30	39,435.30
650 Supplies & Fees – Technology Related			735,785.38	735,785.38
<b>Total Supplies</b>			<b>\$839,633.03</b>	<b>\$839,633.03</b>
<b>700 Property</b>				
758 Capitalized Technology Software - Original			66,666.67	66,666.67
<b>Total Property</b>			<b>\$66,666.67</b>	<b>\$66,666.67</b>
<b>Total 1190 Federally-Funded Regular Programs</b>			<b>\$2,442,015.18</b>	<b>\$2,442,015.18</b>



**General Fund (10)**

**1200 Special Programs – Elementary / Secondary**

	<u>Elementary</u>	<u>Secondary</u>	<u>Federal</u>	<u>Total</u>
<b>100 Personnel Services – Salaries</b>				
100 Personnel Services – Salaries	2,574,862.67	2,281,827.45	49,336.17	4,906,026.29
<b>Total Personnel Services – Salaries</b>	<b>\$2,574,862.67</b>	<b>\$2,281,827.45</b>	<b>\$49,336.17</b>	<b>\$4,906,026.29</b>
<b>200 Personnel Services – Employee Benefits</b>				
210 Group Insurance – Contracted Provider	7,872.23	6,754.96		14,627.19
220 Social Security Contributions	191,038.26	169,959.16	3,774.23	364,771.65
230 PSERS Retirement Contributions	886,868.14	785,311.57	17,025.89	1,689,205.60
250 Unemployment Compensation	4,403.45	3,943.78	79.42	8,426.65
260 Workers' Compensation	23,276.43	20,627.80	446.02	44,350.25
270 Group Insurance – Self-Insurance	560,284.53	447,772.30		1,008,056.83
292 Health Savings Accounts	5,400.00	11,700.00		17,100.00
<b>Total Personnel Services – Employee Benefits</b>	<b>\$1,679,143.04</b>	<b>\$1,446,069.57</b>	<b>\$21,325.56</b>	<b>\$3,146,538.17</b>
<b>300 Purchased Professional and Technical Services</b>				
322 Professional Educational Services – Ius	5,751,791.60	5,751,791.61	1,043,902.58	12,547,485.79
323 Professional Educational Services – Other Educational Agencies	8,835.55	8,835.55		17,671.10
329 Professional Educational Services – Other	2,944,121.95	2,944,121.95	211,759.59	6,100,003.49
330 Other Professional Services	22,299.90	22,299.89		44,599.79
340 Technical Services		475.00		475.00
<b>Total Purchased Professional and Technical Services</b>	<b>\$8,727,049.00</b>	<b>\$8,727,524.00</b>	<b>\$1,255,662.17</b>	<b>\$18,710,235.17</b>
<b>500 Other Purchased Services</b>				
561 Tuition To Other School Districts Within the State	100,425.28	100,425.29		200,850.57
562 Tuition To Pennsylvania Charter Schools	10,246,867.93	10,246,867.93		20,493,735.86
563 Tuition To Nonpublic Schools	1,177.05	1,177.05		2,354.10
567 Tuition To Approved Private Schools (APS) and PA Chartered Schools for the Deaf and Blind	1,471,067.88	1,471,067.88		2,942,135.76
594 IU Payment By Withholding for Institutionalized Children's Programs – Special Classes	373.26	373.27		746.53
<b>Total Other Purchased Services</b>	<b>\$11,819,911.40</b>	<b>\$11,819,911.42</b>		<b>\$23,639,822.82</b>
<b>600 Supplies</b>				
610 General Supplies	1,983.28	1,983.29	765.47	4,732.04
650 Supplies & Fees – Technology Related	86,593.38	86,484.37	158,727.06	331,804.81
<b>Total Supplies</b>	<b>\$88,576.66</b>	<b>\$88,467.66</b>	<b>\$159,492.53</b>	<b>\$336,536.85</b>
<b>Total 1200 Special Programs – Elementary / Secondary</b>	<b>\$24,889,542.77</b>	<b>\$24,363,800.10</b>	<b>\$1,485,816.43</b>	<b>\$50,739,159.30</b>

**General Fund (10)**

**1210 Life Skills Support**

	<u>Elementary</u>	<u>Secondary</u>	<u>Federal</u>	<u>Total</u>
<b>100 Personnel Services – Salaries</b>				
100 Personnel Services – Salaries	117,596.50	144,496.50		262,093.00
<b>Total Personnel Services – Salaries</b>	<b>\$117,596.50</b>	<b>\$144,496.50</b>		<b>\$262,093.00</b>
<b>200 Personnel Services – Employee Benefits</b>				
210 Group Insurance – Contracted Provider	330.72	364.80		695.52
220 Social Security Contributions	8,833.70	10,926.68		19,760.38
230 PSERS Retirement Contributions	40,522.11	49,805.42		90,327.53
250 Unemployment Compensation	119.99	119.99		239.98
260 Workers' Compensation	1,063.03	1,306.37		2,369.40
270 Group Insurance – Self-Insurance	12,316.43	12,316.42		24,632.85
<b>Total Personnel Services – Employee Benefits</b>	<b>\$63,185.98</b>	<b>\$74,839.68</b>		<b>\$138,025.66</b>
<b>Total 1210 Life Skills Support</b>	<b>\$180,782.48</b>	<b>\$219,336.18</b>		<b>\$400,118.66</b>

**General Fund (10)**

**1220 Sensory Support**

**300 Purchased Professional and Technical Services**

322 Professional Educational Services – Ius

**Total Purchased Professional and Technical Services**

**500 Other Purchased Services**

567 Tuition To Approved Private Schools (APS) and PA Chartered Schools for the Deaf and Blind

**Total Other Purchased Services**

**600 Supplies**

610 General Supplies

**Total Supplies**

**Total 1220 Sensory Support**

	<u>Elementary</u>	<u>Secondary</u>	<u>Federal</u>	<u>Total</u>
			2,288.00	2,288.00
			<b>\$2,288.00</b>	<b>\$2,288.00</b>
	1,163.75	1,163.75		2,327.50
	<b>\$1,163.75</b>	<b>\$1,163.75</b>		<b>\$2,327.50</b>
	545.85	545.85		1,091.70
	<b>\$545.85</b>	<b>\$545.85</b>		<b>\$1,091.70</b>
	<b>\$1,709.60</b>	<b>\$1,709.60</b>	<b>\$2,288.00</b>	<b>\$5,707.20</b>

**General Fund (10)**

**1230 Emotional Support**

	<u>Elementary</u>	<u>Secondary</u>	<u>Federal</u>	<u>Total</u>
<b>100 Personnel Services – Salaries</b>				
100 Personnel Services – Salaries	133,362.00	99,190.08		232,552.08
<b>Total Personnel Services – Salaries</b>	<b>\$133,362.00</b>	<b>\$99,190.08</b>		<b>\$232,552.08</b>
<b>200 Personnel Services – Employee Benefits</b>				
210 Group Insurance – Contracted Provider	412.74	327.90		740.64
220 Social Security Contributions	9,519.40	7,557.98		17,077.38
230 PSERS Retirement Contributions	46,023.26	34,230.59		80,253.85
250 Unemployment Compensation	159.49	159.62		319.11
260 Workers' Compensation	1,205.61	896.65		2,102.26
270 Group Insurance – Self-Insurance	27,547.71	8,210.95		35,758.66
292 Health Savings Accounts		900.00		900.00
<b>Total Personnel Services – Employee Benefits</b>	<b>\$84,868.21</b>	<b>\$52,283.69</b>		<b>\$137,151.90</b>
<b>300 Purchased Professional and Technical Services</b>				
323 Professional Educational Services – Other Educational Agencies	4,750.00	4,750.00		9,500.00
<b>Total Purchased Professional and Technical Services</b>	<b>\$4,750.00</b>	<b>\$4,750.00</b>		<b>\$9,500.00</b>
<b>600 Supplies</b>				
610 General Supplies	35.85	35.85		71.70
<b>Total Supplies</b>	<b>\$35.85</b>	<b>\$35.85</b>		<b>\$71.70</b>
<b>Total 1230 Emotional Support</b>	<b>\$223,016.06</b>	<b>\$156,259.62</b>		<b>\$379,275.68</b>

**General Fund (10)**

**1240 Academic Support**

	<u>Elementary</u>	<u>Secondary</u>	<u>Federal</u>	<u>Total</u>
<b>100 Personnel Services – Salaries</b>				
100 Personnel Services – Salaries	2,283,750.44	2,005,116.51		4,288,866.95
<b>Total Personnel Services – Salaries</b>	<b>\$2,283,750.44</b>	<b>\$2,005,116.51</b>		<b>\$4,288,866.95</b>
<b>200 Personnel Services – Employee Benefits</b>				
210 Group Insurance – Contracted Provider	7,074.71	6,008.20		13,082.91
220 Social Security Contributions	169,685.31	149,016.50		318,701.81
230 PSERS Retirement Contributions	786,569.23	689,878.79		1,476,448.02
250 Unemployment Compensation	4,073.09	3,620.31		7,693.40
260 Workers' Compensation	20,644.78	18,126.25		38,771.03
270 Group Insurance – Self-Insurance	508,917.53	415,742.08		924,659.61
292 Health Savings Accounts	4,500.00	9,900.00		14,400.00
<b>Total Personnel Services – Employee Benefits</b>	<b>\$1,501,464.65</b>	<b>\$1,292,292.13</b>		<b>\$2,793,756.78</b>
<b>300 Purchased Professional and Technical Services</b>				
329 Professional Educational Services – Other	2,944,121.95	2,944,121.95	211,759.59	6,100,003.49
340 Technical Services		475.00		475.00
<b>Total Purchased Professional and Technical Services</b>	<b>\$2,944,121.95</b>	<b>\$2,944,596.95</b>	<b>\$211,759.59</b>	<b>\$6,100,478.49</b>
<b>600 Supplies</b>				
610 General Supplies			595.47	595.47
650 Supplies & Fees – Technology Related	2,892.36	2,783.35		5,675.71
<b>Total Supplies</b>	<b>\$2,892.36</b>	<b>\$2,783.35</b>	<b>\$595.47</b>	<b>\$6,271.18</b>
<b>Total 1240 Academic Support</b>	<b>\$6,732,229.40</b>	<b>\$6,244,788.94</b>	<b>\$212,355.06</b>	<b>\$13,189,373.40</b>

**General Fund (10)**

	<u>Elementary</u>	<u>Secondary</u>	<u>Federal</u>	<u>Total</u>
<b>1241 Learning Support – Public</b>				
<b>100 Personnel Services – Salaries</b>				
100 Personnel Services – Salaries	2,184,519.44	1,905,535.51		4,090,054.95
<b>Total Personnel Services – Salaries</b>	<b>\$2,184,519.44</b>	<b>\$1,905,535.51</b>		<b>\$4,090,054.95</b>
<b>200 Personnel Services – Employee Benefits</b>				
210 Group Insurance – Contracted Provider	6,827.63	5,725.24		12,552.87
220 Social Security Contributions	162,658.48	141,710.51		304,368.99
230 PSERS Retirement Contributions	752,324.65	655,634.21		1,407,958.86
250 Unemployment Compensation	3,993.10	3,541.16		7,534.26
260 Workers' Compensation	19,747.77	17,226.08		36,973.85
270 Group Insurance – Self-Insurance	485,364.14	396,626.02		881,990.16
292 Health Savings Accounts	4,500.00	9,900.00		14,400.00
<b>Total Personnel Services – Employee Benefits</b>	<b>\$1,435,415.77</b>	<b>\$1,230,363.22</b>		<b>\$2,665,778.99</b>
<b>300 Purchased Professional and Technical Services</b>				
329 Professional Educational Services – Other	2,944,121.95	2,944,121.95	211,759.59	6,100,003.49
340 Technical Services		475.00		475.00
<b>Total Purchased Professional and Technical Services</b>	<b>\$2,944,121.95</b>	<b>\$2,944,596.95</b>	<b>\$211,759.59</b>	<b>\$6,100,478.49</b>
<b>600 Supplies</b>				
610 General Supplies			595.47	595.47
650 Supplies & Fees – Technology Related	2,892.36	2,783.35		5,675.71
<b>Total Supplies</b>	<b>\$2,892.36</b>	<b>\$2,783.35</b>	<b>\$595.47</b>	<b>\$6,271.18</b>
<b>Total 1241 Learning Support – Public</b>	<b>\$6,566,949.52</b>	<b>\$6,083,279.03</b>	<b>\$212,355.06</b>	<b>\$12,862,583.61</b>

**General Fund (10)**

**1243 Gifted Support**

**100 Personnel Services – Salaries**

	<u>Elementary</u>	<u>Secondary</u>	<u>Federal</u>	<u>Total</u>
100 Personnel Services – Salaries	99,231.00	99,581.00		198,812.00
<b>Total Personnel Services – Salaries</b>	<b>\$99,231.00</b>	<b>\$99,581.00</b>		<b>\$198,812.00</b>

**200 Personnel Services – Employee Benefits**

210 Group Insurance – Contracted Provider	247.08	282.96		530.04
220 Social Security Contributions	7,026.83	7,305.99		14,332.82
230 PSERS Retirement Contributions	34,244.58	34,244.58		68,489.16
250 Unemployment Compensation	79.99	79.15		159.14
260 Workers' Compensation	897.01	900.17		1,797.18
270 Group Insurance – Self-Insurance	23,553.39	19,116.06		42,669.45

<b>Total Personnel Services – Employee Benefits</b>	<b>\$66,048.88</b>	<b>\$61,928.91</b>		<b>\$127,977.79</b>
-----------------------------------------------------	--------------------	--------------------	--	---------------------

<b>Total 1243 Gifted Support</b>	<b>\$165,279.88</b>	<b>\$161,509.91</b>		<b>\$326,789.79</b>
----------------------------------	---------------------	---------------------	--	---------------------

General Fund (10)

1270 Multi-Handicapped Support

300 Purchased Professional and Technical Services

322 Professional Educational Services – lus

**Total Purchased Professional and Technical Services**

**Total 1270 Multi-Handicapped Support**

Elementary

Secondary

Federal

Total

1,041,614.58

1,041,614.58

**\$1,041,614.58**

**\$1,041,614.58**

**\$1,041,614.58**

**\$1,041,614.58**



**General Fund (10)**

**1290 Special Programs - Other Support**

	<u>Elementary</u>	<u>Secondary</u>	<u>Federal</u>	<u>Total</u>
<b>100 Personnel Services – Salaries</b>				
100 Personnel Services – Salaries	40,153.73	33,024.36	49,336.17	122,514.26
<b>Total Personnel Services – Salaries</b>	<b>\$40,153.73</b>	<b>\$33,024.36</b>	<b>\$49,336.17</b>	<b>\$122,514.26</b>
<b>200 Personnel Services – Employee Benefits</b>				
210 Group Insurance – Contracted Provider	54.06	54.06		108.12
220 Social Security Contributions	2,999.85	2,458.00	3,774.23	9,232.08
230 PSERS Retirement Contributions	13,753.54	11,396.77	17,025.89	42,176.20
250 Unemployment Compensation	50.88	43.86	79.42	174.16
260 Workers' Compensation	363.01	298.53	446.02	1,107.56
270 Group Insurance – Self-Insurance	11,502.86	11,502.85		23,005.71
292 Health Savings Accounts	900.00	900.00		1,800.00
<b>Total Personnel Services – Employee Benefits</b>	<b>\$29,624.20</b>	<b>\$26,654.07</b>	<b>\$21,325.56</b>	<b>\$77,603.83</b>
<b>300 Purchased Professional and Technical Services</b>				
322 Professional Educational Services – lus	5,751,791.60	5,751,791.61		11,503,583.21
323 Professional Educational Services – Other Educational Agencies	4,085.55	4,085.55		8,171.10
330 Other Professional Services	22,299.90	22,299.89		44,599.79
<b>Total Purchased Professional and Technical Services</b>	<b>\$5,778,177.05</b>	<b>\$5,778,177.05</b>		<b>\$11,556,354.10</b>
<b>500 Other Purchased Services</b>				
561 Tuition To Other School Districts Within the State	100,425.28	100,425.29		200,850.57
562 Tuition To Pennsylvania Charter Schools	10,246,867.93	10,246,867.93		20,493,735.86
563 Tuition To Nonpublic Schools	1,177.05	1,177.05		2,354.10
567 Tuition To Approved Private Schools (APS) and PA Chartered Schools for the Deaf and Blind	1,469,904.13	1,469,904.13		2,939,808.26
594 IU Payment By Withholding for Institutionalized Children's Programs – Special Classes	373.26	373.27		746.53
<b>Total Other Purchased Services</b>	<b>\$11,818,747.65</b>	<b>\$11,818,747.67</b>		<b>\$23,637,495.32</b>
<b>600 Supplies</b>				
610 General Supplies	1,401.58	1,401.59	170.00	2,973.17
650 Supplies & Fees – Technology Related	83,701.02	83,701.02	158,727.06	326,129.10
<b>Total Supplies</b>	<b>\$85,102.60</b>	<b>\$85,102.61</b>	<b>\$158,897.06</b>	<b>\$329,102.27</b>
<b>Total 1290 Special Programs - Other Support</b>	<b>\$17,751,805.23</b>	<b>\$17,741,705.76</b>	<b>\$229,558.79</b>	<b>\$35,723,069.78</b>

**General Fund (10)**

**1300 Vocational Education**

**100 Personnel Services – Salaries**

	<u>Elementary</u>	<u>Secondary</u>	<u>Federal</u>	<u>Total</u>
100 Personnel Services – Salaries		143,883.45		143,883.45
<b>Total Personnel Services – Salaries</b>		<b>\$143,883.45</b>		<b>\$143,883.45</b>

**200 Personnel Services – Employee Benefits**

210 Group Insurance – Contracted Provider		532.72		532.72
220 Social Security Contributions		10,873.01		10,873.01
230 PSERS Retirement Contributions		47,886.54		47,886.54
250 Unemployment Compensation		159.99		159.99
260 Workers' Compensation		1,300.84		1,300.84
270 Group Insurance – Self-Insurance		23,856.84		23,856.84
<b>Total Personnel Services – Employee Benefits</b>		<b>\$84,609.94</b>		<b>\$84,609.94</b>

**300 Purchased Professional and Technical Services**

323 Professional Educational Services – Other Educational Agencies		10,216.00		10,216.00
<b>Total Purchased Professional and Technical Services</b>		<b>\$10,216.00</b>		<b>\$10,216.00</b>

**500 Other Purchased Services**

564 Tuition To Career and Technology Centers		3,633,510.00		3,633,510.00
<b>Total Other Purchased Services</b>		<b>\$3,633,510.00</b>		<b>\$3,633,510.00</b>

**600 Supplies**

610 General Supplies		11,967.12		11,967.12
<b>Total Supplies</b>		<b>\$11,967.12</b>		<b>\$11,967.12</b>

**Total 1300 Vocational Education**

		<b>\$3,884,186.51</b>		<b>\$3,884,186.51</b>
--	--	-----------------------	--	-----------------------

**General Fund (10)**

	<u>Elementary</u>	<u>Secondary</u>	<u>Federal</u>	<u>Total</u>
<b>1400 Other Instructional Programs – Elementary / Secondary</b>				
<b>100 Personnel Services – Salaries</b>				
100 Personnel Services – Salaries	5,478.00	55,310.01	6,352.50	67,140.51
<b>Total Personnel Services – Salaries</b>	<b>\$5,478.00</b>	<b>\$55,310.01</b>	<b>\$6,352.50</b>	<b>\$67,140.51</b>
<b>200 Personnel Services – Employee Benefits</b>				
210 Group Insurance – Contracted Provider		106.30		106.30
220 Social Security Contributions	413.51	4,123.04	466.53	5,003.08
230 PSERS Retirement Contributions	1,890.45	19,087.44	2,192.22	23,170.11
250 Unemployment Compensation	10.06	39.46		49.52
260 Workers' Compensation	49.51	500.07	57.41	606.99
270 Group Insurance – Self-Insurance		11,776.64		11,776.64
<b>Total Personnel Services – Employee Benefits</b>	<b>\$2,363.53</b>	<b>\$35,632.95</b>	<b>\$2,716.16</b>	<b>\$40,712.64</b>
<b>300 Purchased Professional and Technical Services</b>				
329 Professional Educational Services – Other			1,575.00	1,575.00
<b>Total Purchased Professional and Technical Services</b>			<b>\$1,575.00</b>	<b>\$1,575.00</b>
<b>500 Other Purchased Services</b>				
561 Tuition To Other School Districts Within the State	60,509.54	60,509.54		121,019.08
<b>Total Other Purchased Services</b>	<b>\$60,509.54</b>	<b>\$60,509.54</b>		<b>\$121,019.08</b>
<b>Total 1400 Other Instructional Programs – Elementary / Secondary</b>	<b>\$68,351.07</b>	<b>\$151,452.50</b>	<b>\$10,643.66</b>	<b>\$230,447.23</b>

General Fund (10)

1420 Summer School

100 Personnel Services – Salaries

100 Personnel Services – Salaries

Total Personnel Services – Salaries

200 Personnel Services – Employee Benefits

220 Social Security Contributions

230 PSERS Retirement Contributions

260 Workers' Compensation

Total Personnel Services – Employee Benefits

Total 1420 Summer School

	<u>Elementary</u>	<u>Secondary</u>	<u>Federal</u>	<u>Total</u>
		19,321.50		19,321.50
		<b>\$19,321.50</b>		<b>\$19,321.50</b>
		1,474.35		1,474.35
		6,667.90		6,667.90
		174.70		174.70
		<b>\$8,316.95</b>		<b>\$8,316.95</b>
		<b>\$27,638.45</b>		<b>\$27,638.45</b>

**General Fund (10)**

**1430 Homebound Instruction**

**100 Personnel Services – Salaries**

	<u>Elementary</u>	<u>Secondary</u>	<u>Federal</u>	<u>Total</u>
100 Personnel Services – Salaries	5,313.00			5,313.00
<b>Total Personnel Services – Salaries</b>	<b>\$5,313.00</b>			<b>\$5,313.00</b>

**200 Personnel Services – Employee Benefits**

220 Social Security Contributions	401.79			401.79
230 PSERS Retirement Contributions	1,833.51			1,833.51
250 Unemployment Compensation	10.06			10.06
260 Workers' Compensation	48.02			48.02
<b>Total Personnel Services – Employee Benefits</b>	<b>\$2,293.38</b>			<b>\$2,293.38</b>
<b>Total 1430 Homebound Instruction</b>	<b>\$7,606.38</b>			<b>\$7,606.38</b>

**General Fund (10)**

	<u>Elementary</u>	<u>Secondary</u>	<u>Federal</u>	<u>Total</u>
<b>1440 Alternative Regular Education Programs</b>				
<b>100 Personnel Services – Salaries</b>				
100 Personnel Services – Salaries		35,988.51		35,988.51
<b>Total Personnel Services – Salaries</b>		<b>\$35,988.51</b>		<b>\$35,988.51</b>
<b>200 Personnel Services – Employee Benefits</b>				
210 Group Insurance – Contracted Provider		106.30		106.30
220 Social Security Contributions		2,648.69		2,648.69
230 PSERS Retirement Contributions		12,419.54		12,419.54
250 Unemployment Compensation		39.46		39.46
260 Workers' Compensation		325.37		325.37
270 Group Insurance – Self-Insurance		11,776.64		11,776.64
<b>Total Personnel Services – Employee Benefits</b>		<b>\$27,316.00</b>		<b>\$27,316.00</b>
<b>500 Other Purchased Services</b>				
561 Tuition To Other School Districts Within the State	60,509.54	60,509.54		121,019.08
<b>Total Other Purchased Services</b>	<b>\$60,509.54</b>	<b>\$60,509.54</b>		<b>\$121,019.08</b>
<b>Total 1440 Alternative Regular Education Programs</b>	<b>\$60,509.54</b>	<b>\$123,814.05</b>		<b>\$184,323.59</b>

LEA : 124151902 Coatesville Area SD

Printed 3/31/2022 2:27:57 PM

General Fund (10)

1441 Adjudicated / Court-Placed Programs

500 Other Purchased Services

561 Tuition To Other School Districts Within the State

Total Other Purchased Services

Total 1441 Adjudicated / Court-Placed Programs

Elementary

Secondary

Federal

Total

60,509.54

60,509.54

121,019.08

**\$60,509.54**

**\$60,509.54**

**\$121,019.08**

**\$60,509.54**

**\$60,509.54**

**\$121,019.08**

**General Fund (10)**

**1442 Alternative Education Programs**

**100 Personnel Services – Salaries**

	<u>Elementary</u>	<u>Secondary</u>	<u>Federal</u>	<u>Total</u>
100 Personnel Services – Salaries		35,988.51		35,988.51
<b>Total Personnel Services – Salaries</b>		<b>\$35,988.51</b>		<b>\$35,988.51</b>

**200 Personnel Services – Employee Benefits**

210 Group Insurance – Contracted Provider		106.30		106.30
220 Social Security Contributions		2,648.69		2,648.69
230 PSERS Retirement Contributions		12,419.54		12,419.54
250 Unemployment Compensation		39.46		39.46
260 Workers' Compensation		325.37		325.37
270 Group Insurance – Self-Insurance		11,776.64		11,776.64

<b>Total Personnel Services – Employee Benefits</b>		<b>\$27,316.00</b>		<b>\$27,316.00</b>
-----------------------------------------------------	--	--------------------	--	--------------------

<b>Total 1442 Alternative Education Programs</b>		<b>\$63,304.51</b>		<b>\$63,304.51</b>
--------------------------------------------------	--	--------------------	--	--------------------



**General Fund (10)**

	<u>Elementary</u>	<u>Secondary</u>	<u>Federal</u>	<u>Total</u>
<b>1450 Instructional Programs Outside the Established School Day</b>				
<b>100 Personnel Services – Salaries</b>				
100 Personnel Services – Salaries			6,352.50	6,352.50
<b>Total Personnel Services – Salaries</b>			<b>\$6,352.50</b>	<b>\$6,352.50</b>
<b>200 Personnel Services – Employee Benefits</b>				
220 Social Security Contributions			466.53	466.53
230 PSERS Retirement Contributions			2,192.22	2,192.22
260 Workers' Compensation			57.41	57.41
<b>Total Personnel Services – Employee Benefits</b>			<b>\$2,716.16</b>	<b>\$2,716.16</b>
<b>Total 1450 Instructional Programs Outside the Established School Day</b>			<b>\$9,068.66</b>	<b>\$9,068.66</b>

**General Fund (10)**

	<u>Elementary</u>	<u>Secondary</u>	<u>Federal</u>	<u>Total</u>
<b>1490 Additional Other Instructional Programs</b>				
<b>100 Personnel Services – Salaries</b>				
100 Personnel Services – Salaries	165.00			165.00
<b>Total Personnel Services – Salaries</b>	<b>\$165.00</b>			<b>\$165.00</b>
<b>200 Personnel Services – Employee Benefits</b>				
220 Social Security Contributions	11.72			11.72
230 PSERS Retirement Contributions	56.94			56.94
260 Workers’ Compensation	1.49			1.49
<b>Total Personnel Services – Employee Benefits</b>	<b>\$70.15</b>			<b>\$70.15</b>
<b>300 Purchased Professional and Technical Services</b>				
329 Professional Educational Services – Other			1,575.00	1,575.00
<b>Total Purchased Professional and Technical Services</b>			<b>\$1,575.00</b>	<b>\$1,575.00</b>
<b>Total 1490 Additional Other Instructional Programs</b>	<b>\$235.15</b>		<b>\$1,575.00</b>	<b>\$1,810.15</b>

General Fund (10)

1500 Nonpublic School Programs

Elementary

Secondary

Federal

Total

300 Purchased Professional and Technical Services

360 Employee Training and Development Services

68,091.00

**Total Purchased Professional and Technical Services**

**\$68,091.00**

600 Supplies

610 General Supplies

3,113.06

650 Supplies & Fees – Technology Related

52,912.63

**Total Supplies**

**\$56,025.69**

**Total 1500 Nonpublic School Programs**

**\$124,116.69**

LEA : 124151902 Coatesville Area SD

Printed 3/31/2022 2:27:57 PM

General Fund (10)

1800 Pre-Kindergarten

Elementary

Secondary

Federal

Total

**100 Personnel Services – Salaries**

100 Personnel Services – Salaries

648.00

**Total Personnel Services – Salaries**

**\$648.00**

**200 Personnel Services – Employee Benefits**

220 Social Security Contributions

47.09

230 PSERS Retirement Contributions

223.61

260 Workers' Compensation

5.87

**Total Personnel Services – Employee Benefits**

**\$276.57**

**Total 1800 Pre-Kindergarten**

**\$924.57**

General Fund (10)

1801 Pre-K Instruction

Elementary

Secondary

Federal

Total

100 Personnel Services – Salaries

100 Personnel Services – Salaries

648.00

**Total Personnel Services – Salaries**

**\$648.00**

200 Personnel Services – Employee Benefits

220 Social Security Contributions

47.09

230 PSERS Retirement Contributions

223.61

260 Workers' Compensation

5.87

**Total Personnel Services – Employee Benefits**

**\$276.57**

**Total 1801 Pre-K Instruction**

**\$924.57**

General Fund (10)

2000 Support Services

Total

100 Personnel Services – Salaries

100 Personnel Services – Salaries 9,895,498.03

**Total Personnel Services – Salaries \$9,895,498.03**

200 Personnel Services – Employee Benefits

210 Group Insurance – Contracted Provider 34,818.57

220 Social Security Contributions 734,625.53

230 PSERS Retirement Contributions 3,298,949.63

240 Tuition Reimbursement 198,448.11

250 Unemployment Compensation 12,511.16

260 Workers' Compensation 89,456.45

270 Group Insurance – Self-Insurance 2,243,154.00

292 Health Savings Accounts 127,458.07

**Total Personnel Services – Employee Benefits \$6,739,421.52**

300 Purchased Professional and Technical Services

322 Professional Educational Services – Ius 26,875.00

330 Other Professional Services 1,222,492.64

340 Technical Services 670,021.00

350 Security / Safety Services 77,290.76

360 Employee Training and Development Services 27,032.75

390 Other Purchased Professional and Technical Services 254,076.44

**Total Purchased Professional and Technical Services \$2,277,788.59**

400 Purchased Property Services

410 Cleaning Services 1,813,674.28

420 Utility Services 230,767.43

430 Repairs and Maintenance Services 524,785.15

440 Rentals 671,245.85

460 Extermination Services 12,803.00

490 Other Purchased Property Services 3,657.31

**Total Purchased Property Services \$3,256,933.02**

500 Other Purchased Services

513 Contracted Carriers 8,187,990.96

516 Student Transportation Services From the IU 70,574.34

520 Insurance – General 113,418.60

522 Automotive Liability Insurance 15,748.00

523 General Property and Liability Insurance 349,310.80

529 Other Insurance 208,781.00

530 Communications 689,770.89

541 Advertising Related to Federal Grant Awards 32,168.63

550 Printing and Binding 7,372.30

580 Travel 152.26

595 IU Payments By Withholding 48,055.83

**Total Other Purchased Services \$9,723,343.61**

600 Supplies

610 General Supplies 895,061.20

LEA : 124151902 Coatesville Area SD

Printed 3/31/2022 2:28:00 PM

**General Fund (10)**

**2000 Support Services**

**Total**

**600 Supplies**

620 Energy	1,438,314.18
630 Food	4,413.23
640 Books and Periodicals	25,967.50
650 Supplies & Fees – Technology Related	706,859.33

<b>Total Supplies</b>	<b>\$3,070,615.44</b>
-----------------------	-----------------------

**700 Property**

752 Capital Equipment – Original and Additional	13,655.80
-------------------------------------------------	-----------

<b>Total Property</b>	<b>\$13,655.80</b>
-----------------------	--------------------

**800 Other Objects**

810 Dues and Fees	379,846.59
820 Claims and Judgments Against the LEA	393,531.34
830 Interest	182,900.00
890 Miscellaneous Expenditures	19,956.42

<b>Total Other Objects</b>	<b>\$976,234.35</b>
----------------------------	---------------------

<b>Total 2000 Support Services</b>	<b>\$35,953,490.36</b>
------------------------------------	------------------------

**General Fund (10)**

**2100 Support Services – Students**

**100 Personnel Services – Salaries**

	<u>Elementary</u>	<u>Secondary</u>	<u>Federal</u>	<u>Total</u>
100 Personnel Services – Salaries	805,474.84	1,045,547.75		2,104,682.54
<b>Total Personnel Services – Salaries</b>	<b>\$805,474.84</b>	<b>\$1,045,547.75</b>		<b>\$2,104,682.54</b>

**200 Personnel Services – Employee Benefits**

210 Group Insurance – Contracted Provider	2,548.54	2,994.60		6,408.19
220 Social Security Contributions	59,588.79	77,487.63		156,038.57
230 PSERS Retirement Contributions	277,966.80	360,697.71		722,517.15
250 Unemployment Compensation	1,002.98	1,282.86		2,680.83
260 Workers' Compensation	7,281.57	9,451.85		19,026.39
270 Group Insurance – Self-Insurance	202,780.91	231,067.05		486,028.73
292 Health Savings Accounts	900.00	2,700.00		7,200.00
<b>Total Personnel Services – Employee Benefits</b>	<b>\$552,069.59</b>	<b>\$685,681.70</b>		<b>\$1,399,899.86</b>

**500 Other Purchased Services**

580 Travel	152.26			152.26
<b>Total Other Purchased Services</b>	<b>\$152.26</b>			<b>\$152.26</b>

**600 Supplies**

610 General Supplies	3,275.45	3,639.65		7,019.60
650 Supplies & Fees – Technology Related	493.75	493.75	5,631.95	6,619.45
<b>Total Supplies</b>	<b>\$3,769.20</b>	<b>\$4,133.40</b>	<b>\$5,631.95</b>	<b>\$13,639.05</b>

**800 Other Objects**

890 Miscellaneous Expenditures		19,606.42		19,606.42
<b>Total Other Objects</b>		<b>\$19,606.42</b>		<b>\$19,606.42</b>

**Total 2100 Support Services – Students**

	<b>\$1,361,465.89</b>	<b>\$1,754,969.27</b>	<b>\$5,631.95</b>	<b>\$3,537,980.13</b>
--	-----------------------	-----------------------	-------------------	-----------------------



**General Fund (10)**

**2110 Supervision of Student Services**

**100 Personnel Services – Salaries**

	<u>Elementary</u>	<u>Secondary</u>	<u>Federal</u>	<u>Total</u>
100 Personnel Services – Salaries	34,373.90	34,373.89		68,747.79
<b>Total Personnel Services – Salaries</b>	<b>\$34,373.90</b>	<b>\$34,373.89</b>		<b>\$68,747.79</b>

**200 Personnel Services – Employee Benefits**

210 Group Insurance – Contracted Provider	158.01	158.01		316.02
220 Social Security Contributions	2,526.46	2,526.47		5,052.93
230 PSERS Retirement Contributions	11,862.40	11,862.39		23,724.79
250 Unemployment Compensation	84.16	84.17		168.33
260 Workers' Compensation	310.72	310.73		621.45
270 Group Insurance – Self-Insurance	15,900.62	15,900.62		31,801.24
292 Health Savings Accounts	900.00	900.00		1,800.00

<b>Total Personnel Services – Employee Benefits</b>	<b>\$31,742.37</b>	<b>\$31,742.39</b>		<b>\$63,484.76</b>
-----------------------------------------------------	--------------------	--------------------	--	--------------------

<b>Total 2110 Supervision of Student Services</b>	<b>\$66,116.27</b>	<b>\$66,116.28</b>		<b>\$132,232.55</b>
---------------------------------------------------	--------------------	--------------------	--	---------------------

**General Fund (10)**

	<u>Elementary</u>	<u>Secondary</u>	<u>Federal</u>	<u>Total</u>
<b>2111 Supervision of Student Services – Head of Component</b>				
<b>100 Personnel Services – Salaries</b>				
100 Personnel Services – Salaries	34,373.90	34,373.89		68,747.79
<b>Total Personnel Services – Salaries</b>	<b>\$34,373.90</b>	<b>\$34,373.89</b>		<b>\$68,747.79</b>
<b>200 Personnel Services – Employee Benefits</b>				
210 Group Insurance – Contracted Provider	158.01	158.01		316.02
220 Social Security Contributions	2,526.46	2,526.47		5,052.93
230 PSERS Retirement Contributions	11,862.40	11,862.39		23,724.79
250 Unemployment Compensation	84.16	84.17		168.33
260 Workers' Compensation	310.72	310.73		621.45
270 Group Insurance – Self-Insurance	15,900.62	15,900.62		31,801.24
292 Health Savings Accounts	900.00	900.00		1,800.00
<b>Total Personnel Services – Employee Benefits</b>	<b>\$31,742.37</b>	<b>\$31,742.39</b>		<b>\$63,484.76</b>
<b>Total 2111 Supervision of Student Services – Head of Component</b>	<b>\$66,116.27</b>	<b>\$66,116.28</b>		<b>\$132,232.55</b>

**General Fund (10)**

**2120 Guidance Services**

**100 Personnel Services – Salaries**

	<u>Elementary</u>	<u>Secondary</u>	<u>Federal</u>	<u>Total</u>
100 Personnel Services – Salaries	571,519.58	813,109.37		1,384,628.95
<b>Total Personnel Services – Salaries</b>	<b>\$571,519.58</b>	<b>\$813,109.37</b>		<b>\$1,384,628.95</b>

**200 Personnel Services – Employee Benefits**

210 Group Insurance – Contracted Provider	1,750.39	2,212.79		3,963.18
220 Social Security Contributions	41,985.84	60,212.82		102,198.66
230 PSERS Retirement Contributions	197,229.13	280,483.28		477,712.41
250 Unemployment Compensation	678.80	958.68		1,637.48
260 Workers' Compensation	5,166.48	7,350.60		12,517.08
270 Group Insurance – Self-Insurance	154,124.94	158,804.72		312,929.66
292 Health Savings Accounts		1,800.00		1,800.00
<b>Total Personnel Services – Employee Benefits</b>	<b>\$400,935.58</b>	<b>\$511,822.89</b>		<b>\$912,758.47</b>

**600 Supplies**

610 General Supplies	2,750.00	3,114.20		5,864.20
<b>Total Supplies</b>	<b>\$2,750.00</b>	<b>\$3,114.20</b>		<b>\$5,864.20</b>

**800 Other Objects**

890 Miscellaneous Expenditures		19,606.42		19,606.42
<b>Total Other Objects</b>		<b>\$19,606.42</b>		<b>\$19,606.42</b>
<b>Total 2120 Guidance Services</b>	<b>\$975,205.16</b>	<b>\$1,347,652.88</b>		<b>\$2,322,858.04</b>

**General Fund (10)**

**2130 Attendance Services**

**100 Personnel Services – Salaries**

	<u>Elementary</u>	<u>Secondary</u>	<u>Federal</u>	<u>Total</u>
100 Personnel Services – Salaries				253,659.95
<b>Total Personnel Services – Salaries</b>				<b>\$253,659.95</b>
<b>200 Personnel Services – Employee Benefits</b>				
210 Group Insurance – Contracted Provider				865.05
220 Social Security Contributions				18,962.15
230 PSERS Retirement Contributions				83,852.64
250 Unemployment Compensation				394.99
260 Workers' Compensation				2,292.97
270 Group Insurance – Self-Insurance				52,180.77
292 Health Savings Accounts				3,600.00
<b>Total Personnel Services – Employee Benefits</b>				<b>\$162,148.57</b>
<b>600 Supplies</b>				
610 General Supplies				104.50
<b>Total Supplies</b>				<b>\$104.50</b>
<b>Total 2130 Attendance Services</b>				<b>\$415,913.02</b>

**General Fund (10)**

**2140 Psychological Services**

	<u>Elementary</u>	<u>Secondary</u>	<u>Federal</u>	<u>Total</u>
<b>100 Personnel Services – Salaries</b>				
100 Personnel Services – Salaries	199,581.36	198,064.49		397,645.85
<b>Total Personnel Services – Salaries</b>	<b>\$199,581.36</b>	<b>\$198,064.49</b>		<b>\$397,645.85</b>
<b>200 Personnel Services – Employee Benefits</b>				
210 Group Insurance – Contracted Provider	640.14	623.80		1,263.94
220 Social Security Contributions	15,076.49	14,748.34		29,824.83
230 PSERS Retirement Contributions	68,875.27	68,352.04		137,227.31
250 Unemployment Compensation	240.02	240.01		480.03
260 Workers' Compensation	1,804.37	1,790.52		3,594.89
270 Group Insurance – Self-Insurance	32,755.35	56,361.71		89,117.06
<b>Total Personnel Services – Employee Benefits</b>	<b>\$119,391.64</b>	<b>\$142,116.42</b>		<b>\$261,508.06</b>
<b>500 Other Purchased Services</b>				
580 Travel	152.26			152.26
<b>Total Other Purchased Services</b>	<b>\$152.26</b>			<b>\$152.26</b>
<b>600 Supplies</b>				
610 General Supplies	525.45	525.45		1,050.90
650 Supplies & Fees – Technology Related	493.75	493.75	5,631.95	6,619.45
<b>Total Supplies</b>	<b>\$1,019.20</b>	<b>\$1,019.20</b>	<b>\$5,631.95</b>	<b>\$7,670.35</b>
<b>Total 2140 Psychological Services</b>	<b>\$320,144.46</b>	<b>\$341,200.11</b>	<b>\$5,631.95</b>	<b>\$666,976.52</b>

**General Fund (10)**

**2200 Support Services – Instructional Staff**

	<u>Elementary</u>	<u>Secondary</u>	<u>Federal</u>	<u>Total</u>
<b>100 Personnel Services – Salaries</b>				
100 Personnel Services – Salaries	1,035,099.35	247,845.21	64,221.86	1,347,166.42
<b>Total Personnel Services – Salaries</b>	<b>\$1,035,099.35</b>	<b>\$247,845.21</b>	<b>\$64,221.86</b>	<b>\$1,347,166.42</b>
<b>200 Personnel Services – Employee Benefits</b>				
210 Group Insurance – Contracted Provider	3,138.32	1,417.12	275.52	4,830.96
220 Social Security Contributions	66,619.08	28,092.01	4,692.65	99,403.74
230 PSERS Retirement Contributions	294,501.87	126,421.75	21,039.53	441,963.15
240 Tuition Reimbursement	122,606.40	81,294.71		203,901.11
250 Unemployment Compensation	855.89	576.34	80.00	1,512.23
260 Workers' Compensation	8,074.21	3,523.93	580.44	12,178.58
270 Group Insurance – Self-Insurance	155,611.52	120,814.00	28,617.22	305,042.74
292 Health Savings Accounts	13,800.00	8,100.00		21,900.00
<b>Total Personnel Services – Employee Benefits</b>	<b>\$665,207.29</b>	<b>\$370,239.86</b>	<b>\$55,285.36</b>	<b>\$1,090,732.51</b>
<b>300 Purchased Professional and Technical Services</b>				
322 Professional Educational Services – Ius			26,875.00	26,875.00
360 Employee Training and Development Services	3,289.50	3,289.50	16,713.00	23,292.00
<b>Total Purchased Professional and Technical Services</b>	<b>\$3,289.50</b>	<b>\$3,289.50</b>	<b>\$43,588.00</b>	<b>\$50,167.00</b>
<b>400 Purchased Property Services</b>				
430 Repairs and Maintenance Services	276.18	276.18		552.36
<b>Total Purchased Property Services</b>	<b>\$276.18</b>	<b>\$276.18</b>		<b>\$552.36</b>
<b>500 Other Purchased Services</b>				
541 Advertising Related to Federal Grant Awards	300.00	300.00		600.00
<b>Total Other Purchased Services</b>	<b>\$300.00</b>	<b>\$300.00</b>		<b>\$600.00</b>
<b>600 Supplies</b>				
610 General Supplies	12,582.28	644.68		13,226.96
640 Books and Periodicals	12,983.75	12,983.75		25,967.50
650 Supplies & Fees – Technology Related	13,305.00	10,745.00		24,050.00
<b>Total Supplies</b>	<b>\$38,871.03</b>	<b>\$24,373.43</b>		<b>\$63,244.46</b>
<b>800 Other Objects</b>				
810 Dues and Fees	310.00	310.00		620.00
890 Miscellaneous Expenditures	175.00	175.00		350.00
<b>Total Other Objects</b>	<b>\$485.00</b>	<b>\$485.00</b>		<b>\$970.00</b>
<b>Total 2200 Support Services – Instructional Staff</b>	<b>\$1,743,528.35</b>	<b>\$646,809.18</b>	<b>\$163,095.22</b>	<b>\$2,553,432.75</b>

**General Fund (10)**

**2240 Computer-Assisted Instruction Support Services**

	<u>Elementary</u>	<u>Secondary</u>	<u>Federal</u>	<u>Total</u>
<b>100 Personnel Services – Salaries</b>				
100 Personnel Services – Salaries	139,729.14	139,729.14		279,458.28
<b>Total Personnel Services – Salaries</b>	<b>\$139,729.14</b>	<b>\$139,729.14</b>		<b>\$279,458.28</b>
<b>200 Personnel Services – Employee Benefits</b>				
210 Group Insurance – Contracted Provider	629.78	629.78		1,259.56
220 Social Security Contributions	10,415.44	10,415.45		20,830.89
230 PSERS Retirement Contributions	44,440.04	44,440.05		88,880.09
250 Unemployment Compensation	238.06	238.07		476.13
260 Workers' Compensation	1,263.38	1,263.38		2,526.76
270 Group Insurance – Self-Insurance	51,110.76	51,110.77		102,221.53
292 Health Savings Accounts	3,300.00	3,300.00		6,600.00
<b>Total Personnel Services – Employee Benefits</b>	<b>\$111,397.46</b>	<b>\$111,397.50</b>		<b>\$222,794.96</b>
<b>Total 2240 Computer-Assisted Instruction Support Services</b>	<b>\$251,126.60</b>	<b>\$251,126.64</b>		<b>\$502,253.24</b>

LEA : 124151902 Coatesville Area SD

Printed 3/31/2022 2:28:00 PM

**General Fund (10)**

	<u>Elementary</u>	<u>Secondary</u>	<u>Federal</u>	<u>Total</u>
<b>2250 School Library Services</b>				
<b>100 Personnel Services – Salaries</b>				
100 Personnel Services – Salaries	14,430.15	72,290.47		86,720.62
<b>Total Personnel Services – Salaries</b>	<b>\$14,430.15</b>	<b>\$72,290.47</b>		<b>\$86,720.62</b>
<b>200 Personnel Services – Employee Benefits</b>				
210 Group Insurance – Contracted Provider	114.90	308.06		422.96
220 Social Security Contributions	1,099.90	5,174.48		6,274.38
230 PSERS Retirement Contributions	4,979.84	24,947.48		29,927.32
250 Unemployment Compensation	85.58	242.72		328.30
260 Workers' Compensation	130.44	653.57		784.01
270 Group Insurance – Self-Insurance	11,357.42	46,195.92		57,553.34
292 Health Savings Accounts		1,800.00		1,800.00
<b>Total Personnel Services – Employee Benefits</b>	<b>\$17,768.08</b>	<b>\$79,322.23</b>		<b>\$97,090.31</b>
<b>600 Supplies</b>				
610 General Supplies		270.08		270.08
640 Books and Periodicals	1,500.00	1,500.00		3,000.00
650 Supplies & Fees – Technology Related	3,297.50	737.50		4,035.00
<b>Total Supplies</b>	<b>\$4,797.50</b>	<b>\$2,507.58</b>		<b>\$7,305.08</b>
<b>Total 2250 School Library Services</b>	<b>\$36,995.73</b>	<b>\$154,120.28</b>		<b>\$191,116.01</b>



**General Fund (10)**

	<u>Elementary</u>	<u>Secondary</u>	<u>Federal</u>	<u>Total</u>
<b>2260 Instruction and Curriculum Development Services</b>				
<b>100 Personnel Services – Salaries</b>				
100 Personnel Services – Salaries	880,940.06	35,825.60	62,142.86	978,908.52
<b>Total Personnel Services – Salaries</b>	<b>\$880,940.06</b>	<b>\$35,825.60</b>	<b>\$62,142.86</b>	<b>\$978,908.52</b>
<b>200 Personnel Services – Employee Benefits</b>				
210 Group Insurance – Contracted Provider	2,393.64	479.28	275.52	3,148.44
220 Social Security Contributions	55,103.74	12,502.08	4,533.60	72,139.42
230 PSERS Retirement Contributions	245,081.99	57,034.22	20,322.07	322,438.28
250 Unemployment Compensation	532.25	95.55	80.00	707.80
260 Workers' Compensation	6,680.39	1,606.98	561.65	8,849.02
270 Group Insurance – Self-Insurance	93,143.34	23,507.31	28,617.22	145,267.87
292 Health Savings Accounts	10,500.00	3,000.00		13,500.00
<b>Total Personnel Services – Employee Benefits</b>	<b>\$413,435.35</b>	<b>\$98,225.42</b>	<b>\$54,390.06</b>	<b>\$566,050.83</b>
<b>300 Purchased Professional and Technical Services</b>				
322 Professional Educational Services – lus			26,875.00	26,875.00
<b>Total Purchased Professional and Technical Services</b>			<b>\$26,875.00</b>	<b>\$26,875.00</b>
<b>400 Purchased Property Services</b>				
430 Repairs and Maintenance Services	276.18	276.18		552.36
<b>Total Purchased Property Services</b>	<b>\$276.18</b>	<b>\$276.18</b>		<b>\$552.36</b>
<b>500 Other Purchased Services</b>				
541 Advertising Related to Federal Grant Awards	300.00	300.00		600.00
<b>Total Other Purchased Services</b>	<b>\$300.00</b>	<b>\$300.00</b>		<b>\$600.00</b>
<b>600 Supplies</b>				
610 General Supplies	12,582.28	374.60		12,956.88
640 Books and Periodicals	11,483.75	11,483.75		22,967.50
650 Supplies & Fees – Technology Related	10,007.50	10,007.50		20,015.00
<b>Total Supplies</b>	<b>\$34,073.53</b>	<b>\$21,865.85</b>		<b>\$55,939.38</b>
<b>800 Other Objects</b>				
810 Dues and Fees	310.00	310.00		620.00
890 Miscellaneous Expenditures	175.00	175.00		350.00
<b>Total Other Objects</b>	<b>\$485.00</b>	<b>\$485.00</b>		<b>\$970.00</b>
<b>Total 2260 Instruction and Curriculum Development Services</b>	<b>\$1,329,510.12</b>	<b>\$156,978.05</b>	<b>\$143,407.92</b>	<b>\$1,629,896.09</b>

**General Fund (10)**

2270 Instructional Staff Professional Development Services	<u>Elementary</u>	<u>Secondary</u>	<u>Federal</u>	<u>Total</u>
<b>100 Personnel Services – Salaries</b>				
100 Personnel Services – Salaries			2,079.00	2,079.00
<b>Total Personnel Services – Salaries</b>			<b>\$2,079.00</b>	<b>\$2,079.00</b>
<b>200 Personnel Services – Employee Benefits</b>				
220 Social Security Contributions			159.05	159.05
230 PSERS Retirement Contributions			717.46	717.46
240 Tuition Reimbursement	122,606.40	81,294.71		203,901.11
260 Workers' Compensation			18.79	18.79
<b>Total Personnel Services – Employee Benefits</b>	<b>\$122,606.40</b>	<b>\$81,294.71</b>	<b>\$895.30</b>	<b>\$204,796.41</b>
<b>300 Purchased Professional and Technical Services</b>				
360 Employee Training and Development Services	3,289.50	3,289.50	16,713.00	23,292.00
<b>Total Purchased Professional and Technical Services</b>	<b>\$3,289.50</b>	<b>\$3,289.50</b>	<b>\$16,713.00</b>	<b>\$23,292.00</b>
<b>Total 2270 Instructional Staff Professional Development Services</b>	<b>\$125,895.90</b>	<b>\$84,584.21</b>	<b>\$19,687.30</b>	<b>\$230,167.41</b>

LEA : 124151902 Coatesville Area SD

Printed 3/31/2022 2:28:00 PM

**General Fund (10)**

**2300 Support Services – Administration**

	<u>Elementary</u>	<u>Secondary</u>	<u>Federal</u>	<u>Total</u>
<b>100 Personnel Services – Salaries</b>				
100 Personnel Services – Salaries	1,407,276.97	1,525,383.95		3,317,131.44
<b>Total Personnel Services – Salaries</b>	<b>\$1,407,276.97</b>	<b>\$1,525,383.95</b>		<b>\$3,317,131.44</b>
<b>200 Personnel Services – Employee Benefits</b>				
210 Group Insurance – Contracted Provider	4,843.67	5,539.42		12,093.55
220 Social Security Contributions	105,291.87	112,821.20		247,384.82
230 PSERS Retirement Contributions	459,656.78	497,007.57		1,081,934.35
250 Unemployment Compensation	1,575.48	1,382.91		3,327.54
260 Workers' Compensation	12,721.84	13,789.85		29,987.05
270 Group Insurance – Self-Insurance	257,593.66	257,886.15		583,294.72
292 Health Savings Accounts	23,698.27	23,692.49		56,950.38
<b>Total Personnel Services – Employee Benefits</b>	<b>\$865,381.57</b>	<b>\$912,119.59</b>		<b>\$2,014,972.41</b>
<b>300 Purchased Professional and Technical Services</b>				
330 Other Professional Services			151,676.73	959,137.86
350 Security / Safety Services				5,981.00
390 Other Purchased Professional and Technical Services	17,883.83	917.50		36,335.62
<b>Total Purchased Professional and Technical Services</b>	<b>\$17,883.83</b>	<b>\$917.50</b>	<b>\$151,676.73</b>	<b>\$1,001,454.48</b>
<b>400 Purchased Property Services</b>				
440 Rentals	67,091.13	64,236.35		141,287.88
<b>Total Purchased Property Services</b>	<b>\$67,091.13</b>	<b>\$64,236.35</b>		<b>\$141,287.88</b>
<b>500 Other Purchased Services</b>				
530 Communications				7,644.37
541 Advertising Related to Federal Grant Awards				31,568.63
550 Printing and Binding				7,372.30
<b>Total Other Purchased Services</b>				<b>\$46,585.30</b>
<b>600 Supplies</b>				
610 General Supplies	2,542.72	2,872.11		28,817.23
630 Food	1,321.76	1,006.84		4,413.23
650 Supplies & Fees – Technology Related				999.00
<b>Total Supplies</b>	<b>\$3,864.48</b>	<b>\$3,878.95</b>		<b>\$34,229.46</b>
<b>800 Other Objects</b>				
810 Dues and Fees	4,087.00	4,390.00		366,299.60
820 Claims and Judgments Against the LEA				393,531.34
<b>Total Other Objects</b>	<b>\$4,087.00</b>	<b>\$4,390.00</b>		<b>\$759,830.94</b>
<b>Total 2300 Support Services – Administration</b>	<b>\$2,365,584.98</b>	<b>\$2,510,926.34</b>	<b>\$151,676.73</b>	<b>\$7,315,491.91</b>

**General Fund (10)**

**2310 Board Services**

Elementary                      Secondary                      Federal                      Total

<b>100</b>	<b><u>Personnel Services – Salaries</u></b>			
	100 Personnel Services – Salaries			539.24
<b>Total Personnel Services – Salaries</b>				<b>\$539.24</b>
<b>200</b>	<b><u>Personnel Services – Employee Benefits</u></b>			
	220 Social Security Contributions			41.25
	260 Workers' Compensation			4.87
<b>Total Personnel Services – Employee Benefits</b>				<b>\$46.12</b>
<b>300</b>	<b><u>Purchased Professional and Technical Services</u></b>			
	330 Other Professional Services			35,800.00
<b>Total Purchased Professional and Technical Services</b>				<b>\$35,800.00</b>
<b>500</b>	<b><u>Other Purchased Services</u></b>			
	530 Communications			1,515.91
	541 Advertising Related to Federal Grant Awards			31,568.63
	550 Printing and Binding			380.00
<b>Total Other Purchased Services</b>				<b>\$33,464.54</b>
<b>600</b>	<b><u>Supplies</u></b>			
	610 General Supplies			2,240.50
	630 Food			666.37
	650 Supplies & Fees – Technology Related			999.00
<b>Total Supplies</b>				<b>\$3,905.87</b>
<b>800</b>	<b><u>Other Objects</u></b>			
	810 Dues and Fees			16,779.57
	820 Claims and Judgments Against the LEA			393,531.34
<b>Total Other Objects</b>				<b>\$410,310.91</b>
<b>Total 2310 Board Services</b>				<b>\$484,066.68</b>

**General Fund (10)**

	<u>Elementary</u>	<u>Secondary</u>	<u>Federal</u>	<u>Total</u>
<b>2330 Tax Assessment and Collection Services</b>				
<b>100 Personnel Services – Salaries</b>				
100 Personnel Services – Salaries				4,014.00
<b>Total Personnel Services – Salaries</b>				<b>\$4,014.00</b>
<b>200 Personnel Services – Employee Benefits</b>				
220 Social Security Contributions				307.07
250 Unemployment Compensation				32.11
260 Workers' Compensation				36.29
<b>Total Personnel Services – Employee Benefits</b>				<b>\$375.47</b>
<b>300 Purchased Professional and Technical Services</b>				
330 Other Professional Services				60,273.11
<b>Total Purchased Professional and Technical Services</b>				<b>\$60,273.11</b>
<b>500 Other Purchased Services</b>				
530 Communications				6,128.46
<b>Total Other Purchased Services</b>				<b>\$6,128.46</b>
<b>800 Other Objects</b>				
810 Dues and Fees				217,325.03
<b>Total Other Objects</b>				<b>\$217,325.03</b>
<b>Total 2330 Tax Assessment and Collection Services</b>				<b>\$288,116.07</b>

LEA : 124151902 Coatesville Area SD

Printed 3/31/2022 2:28:00 PM

General Fund (10)

2350 Legal and Accounting Services

Elementary

Secondary

Federal

Total

300 Purchased Professional and Technical Services

330 Other Professional Services

711,388.02

**Total Purchased Professional and Technical Services**

**\$711,388.02**

**Total 2350 Legal and Accounting Services**

**\$711,388.02**

**General Fund (10)**

**2360 Office of the Superintendent / Executive Director Services**

Elementary

Secondary

Federal

Total

**100 Personnel Services – Salaries**

100 Personnel Services – Salaries 379,917.28

**Total Personnel Services – Salaries \$379,917.28**

**200 Personnel Services – Employee Benefits**

210 Group Insurance – Contracted Provider 1,710.46

220 Social Security Contributions 28,923.43

230 PSERS Retirement Contributions 125,270.00

250 Unemployment Compensation 337.04

260 Workers' Compensation 3,434.20

270 Group Insurance – Self-Insurance 67,814.91

292 Health Savings Accounts 9,559.62

**Total Personnel Services – Employee Benefits \$237,049.66**

**300 Purchased Professional and Technical Services**

330 Other Professional Services 151,676.73 151,676.73

390 Other Purchased Professional and Technical Services 17,534.29

**Total Purchased Professional and Technical Services \$151,676.73 \$169,211.02**

**600 Supplies**

610 General Supplies 523.41

630 Food 1,418.26

**Total Supplies \$1,941.67**

**800 Other Objects**

810 Dues and Fees 70.00

**Total Other Objects \$70.00**

**Total 2360 Office of the Superintendent / Executive Director Services \$151,676.73 \$788,189.63**

**General Fund (10)**

**2380 Office of the Principal Services**

	<u>Elementary</u>	<u>Secondary</u>	<u>Federal</u>	<u>Total</u>
<b>100 Personnel Services – Salaries</b>				
100 Personnel Services – Salaries	1,407,276.97	1,525,383.95		2,932,660.92
<b>Total Personnel Services – Salaries</b>	<b>\$1,407,276.97</b>	<b>\$1,525,383.95</b>		<b>\$2,932,660.92</b>
<b>200 Personnel Services – Employee Benefits</b>				
210 Group Insurance – Contracted Provider	4,843.67	5,539.42		10,383.09
220 Social Security Contributions	105,291.87	112,821.20		218,113.07
230 PSERS Retirement Contributions	459,656.78	497,007.57		956,664.35
250 Unemployment Compensation	1,575.48	1,382.91		2,958.39
260 Workers' Compensation	12,721.84	13,789.85		26,511.69
270 Group Insurance – Self-Insurance	257,593.66	257,886.15		515,479.81
292 Health Savings Accounts	23,698.27	23,692.49		47,390.76
<b>Total Personnel Services – Employee Benefits</b>	<b>\$865,381.57</b>	<b>\$912,119.59</b>		<b>\$1,777,501.16</b>
<b>300 Purchased Professional and Technical Services</b>				
390 Other Purchased Professional and Technical Services	17,883.83	917.50		18,801.33
<b>Total Purchased Professional and Technical Services</b>	<b>\$17,883.83</b>	<b>\$917.50</b>		<b>\$18,801.33</b>
<b>400 Purchased Property Services</b>				
440 Rentals	67,091.13	64,236.35		131,327.48
<b>Total Purchased Property Services</b>	<b>\$67,091.13</b>	<b>\$64,236.35</b>		<b>\$131,327.48</b>
<b>600 Supplies</b>				
610 General Supplies	2,542.72	2,872.11		5,414.83
630 Food	1,321.76	1,006.84		2,328.60
<b>Total Supplies</b>	<b>\$3,864.48</b>	<b>\$3,878.95</b>		<b>\$7,743.43</b>
<b>800 Other Objects</b>				
810 Dues and Fees	4,087.00	4,390.00		8,477.00
<b>Total Other Objects</b>	<b>\$4,087.00</b>	<b>\$4,390.00</b>		<b>\$8,477.00</b>
<b>Total 2380 Office of the Principal Services</b>	<b>\$2,365,584.98</b>	<b>\$2,510,926.34</b>		<b>\$4,876,511.32</b>



General Fund (10)

	<u>Elementary</u>	<u>Secondary</u>	<u>Federal</u>	<u>Total</u>
<b>2390 Other Administration Services</b>				
<b>300 <u>Purchased Professional and Technical Services</u></b>				
350 Security / Safety Services				5,981.00
<b>Total Purchased Professional and Technical Services</b>				<b>\$5,981.00</b>
<b>400 <u>Purchased Property Services</u></b>				
440 Rentals				9,960.40
<b>Total Purchased Property Services</b>				<b>\$9,960.40</b>
<b>500 <u>Other Purchased Services</u></b>				
550 Printing and Binding				6,992.30
<b>Total Other Purchased Services</b>				<b>\$6,992.30</b>
<b>600 <u>Supplies</u></b>				
610 General Supplies				20,638.49
<b>Total Supplies</b>				<b>\$20,638.49</b>
<b>800 <u>Other Objects</u></b>				
810 Dues and Fees				123,648.00
<b>Total Other Objects</b>				<b>\$123,648.00</b>
<b>Total 2390 Other Administration Services</b>				<b>\$167,220.19</b>

**General Fund (10)**

	<u>Elementary</u>	<u>Secondary</u>	<u>Federal</u>	<u>Total</u>
<b>2400 Support Services – Pupil Health</b>				
<b>100 Personnel Services – Salaries</b>				
100 Personnel Services – Salaries				509,478.69
<b>Total Personnel Services – Salaries</b>				<b>\$509,478.69</b>
<b>200 Personnel Services – Employee Benefits</b>				
210 Group Insurance – Contracted Provider				1,480.46
220 Social Security Contributions				37,581.01
230 PSERS Retirement Contributions				175,700.21
250 Unemployment Compensation				559.96
260 Workers' Compensation				4,605.68
270 Group Insurance – Self-Insurance				118,540.89
292 Health Savings Accounts				1,800.00
<b>Total Personnel Services – Employee Benefits</b>				<b>\$340,268.21</b>
<b>300 Purchased Professional and Technical Services</b>				
330 Other Professional Services			43,353.50	130,449.70
<b>Total Purchased Professional and Technical Services</b>			<b>\$43,353.50</b>	<b>\$130,449.70</b>
<b>400 Purchased Property Services</b>				
430 Repairs and Maintenance Services				2,551.00
<b>Total Purchased Property Services</b>				<b>\$2,551.00</b>
<b>600 Supplies</b>				
610 General Supplies			216.20	43,692.36
<b>Total Supplies</b>			<b>\$216.20</b>	<b>\$43,692.36</b>
<b>Total 2400 Support Services – Pupil Health</b>			<b>\$43,569.70</b>	<b>\$1,026,439.96</b>

**General Fund (10)**

**2420 Medical Services**

	<u>Elementary</u>	<u>Secondary</u>	<u>Federal</u>	<u>Total</u>
<b>100 Personnel Services – Salaries</b>				
100 Personnel Services – Salaries				509,478.69
<b>Total Personnel Services – Salaries</b>				<b>\$509,478.69</b>
<b>200 Personnel Services – Employee Benefits</b>				
210 Group Insurance – Contracted Provider				1,480.46
220 Social Security Contributions				37,581.01
230 PSERS Retirement Contributions				175,700.21
250 Unemployment Compensation				559.96
260 Workers' Compensation				4,605.68
270 Group Insurance – Self-Insurance				118,540.89
292 Health Savings Accounts				1,800.00
<b>Total Personnel Services – Employee Benefits</b>				<b>\$340,268.21</b>
<b>300 Purchased Professional and Technical Services</b>				
330 Other Professional Services				87,096.20
<b>Total Purchased Professional and Technical Services</b>				<b>\$87,096.20</b>
<b>400 Purchased Property Services</b>				
430 Repairs and Maintenance Services				2,551.00
<b>Total Purchased Property Services</b>				<b>\$2,551.00</b>
<b>600 Supplies</b>				
610 General Supplies				12,608.16
<b>Total Supplies</b>				<b>\$12,608.16</b>
<b>Total 2420 Medical Services</b>				<b>\$952,002.26</b>

General Fund (10)

2440 Nursing Services

300 Purchased Professional and Technical Services

330 Other Professional Services

**Total Purchased Professional and Technical Services**

**Total 2440 Nursing Services**

Elementary

Secondary

Federal

Total

43,353.50

43,353.50

**\$43,353.50**

**\$43,353.50**

**\$43,353.50**

**\$43,353.50**

LEA : 124151902 Coatesville Area SD

Printed 3/31/2022 2:28:00 PM

General Fund (10)

2490 Other Health Services

Elementary

Secondary

Federal

Total

600 Supplies

610 General Supplies

216.20

31,084.20

**Total Supplies**

**\$216.20**

**\$31,084.20**

**Total 2490 Other Health Services**

**\$216.20**

**\$31,084.20**

General Fund (10)

2500 Support Services – Business

Elementary                      Secondary                      Federal                      Total

100 Personnel Services – Salaries

100 Personnel Services – Salaries 691,273.03

**Total Personnel Services – Salaries \$691,273.03**

200 Personnel Services – Employee Benefits

210 Group Insurance – Contracted Provider 2,883.14

220 Social Security Contributions 51,611.31

230 PSERS Retirement Contributions 230,165.07

250 Unemployment Compensation 973.05

260 Workers' Compensation 6,248.86

270 Group Insurance – Self-Insurance 122,477.15

292 Health Savings Accounts 19,257.69

**Total Personnel Services – Employee Benefits \$433,616.27**

300 Purchased Professional and Technical Services

330 Other Professional Services 37,800.00

390 Other Purchased Professional and Technical Services 45,171.50

**Total Purchased Professional and Technical Services \$82,971.50**

500 Other Purchased Services

530 Communications 45,733.08

**Total Other Purchased Services \$45,733.08**

600 Supplies

610 General Supplies 4,898.65

650 Supplies & Fees – Technology Related 12,785.81

**Total Supplies \$17,684.46**

800 Other Objects

810 Dues and Fees 6,270.24

830 Interest 182,900.00

**Total Other Objects \$189,170.24**

**Total 2500 Support Services – Business \$1,460,448.58**

**General Fund (10)**

**2510 Fiscal Services**

Elementary                      Secondary                      Federal                      Total

<b>100</b>	<b><u>Personnel Services – Salaries</u></b>				
	100 Personnel Services – Salaries				647,617.03
<b>Total Personnel Services – Salaries</b>					<b>\$647,617.03</b>
<b>200</b>	<b><u>Personnel Services – Employee Benefits</u></b>				
	210 Group Insurance – Contracted Provider				2,689.55
	220 Social Security Contributions				48,308.19
	230 PSERS Retirement Contributions				215,306.46
	250 Unemployment Compensation				813.07
	260 Workers' Compensation				5,854.24
	270 Group Insurance – Self-Insurance				106,114.01
	292 Health Savings Accounts				16,257.69
<b>Total Personnel Services – Employee Benefits</b>					<b>\$395,343.21</b>
<b>300</b>	<b><u>Purchased Professional and Technical Services</u></b>				
	330 Other Professional Services				37,800.00
	390 Other Purchased Professional and Technical Services				45,171.50
<b>Total Purchased Professional and Technical Services</b>					<b>\$82,971.50</b>
<b>500</b>	<b><u>Other Purchased Services</u></b>				
	530 Communications				45,733.08
<b>Total Other Purchased Services</b>					<b>\$45,733.08</b>
<b>600</b>	<b><u>Supplies</u></b>				
	610 General Supplies				4,898.65
	650 Supplies & Fees – Technology Related				12,500.84
<b>Total Supplies</b>					<b>\$17,399.49</b>
<b>800</b>	<b><u>Other Objects</u></b>				
	810 Dues and Fees				6,270.24
	830 Interest				182,900.00
<b>Total Other Objects</b>					<b>\$189,170.24</b>
<b>Total 2510 Fiscal Services</b>					<b>\$1,378,234.55</b>

General Fund (10)

2511 Supervision of Fiscal Services - Head of Component

Elementary                      Secondary                      Federal                      Total

100 Personnel Services – Salaries

100 Personnel Services – Salaries 204,384.14

**Total Personnel Services – Salaries \$204,384.14**

200 Personnel Services – Employee Benefits

210 Group Insurance – Contracted Provider 758.64

220 Social Security Contributions 15,357.85

230 PSERS Retirement Contributions 68,860.64

250 Unemployment Compensation 160.01

260 Workers' Compensation 1,847.69

270 Group Insurance – Self-Insurance 16,385.42

292 Health Savings Accounts 3,000.00

**Total Personnel Services – Employee Benefits \$106,370.25**

300 Purchased Professional and Technical Services

390 Other Purchased Professional and Technical Services 45,171.50

**Total Purchased Professional and Technical Services \$45,171.50**

600 Supplies

610 General Supplies 1,409.44

650 Supplies & Fees – Technology Related 12,500.84

**Total Supplies \$13,910.28**

800 Other Objects

810 Dues and Fees 2,490.23

**Total Other Objects \$2,490.23**

**Total 2511 Supervision of Fiscal Services - Head of Component \$372,326.40**



**General Fund (10)**

**2513 Receiving and Disbursing Funds Services**

Elementary                      Secondary                      Federal                      Total

<b>100</b>	<b><u>Personnel Services – Salaries</u></b>			
	100 Personnel Services – Salaries			383,658.63
<b>Total Personnel Services – Salaries</b>				<b>\$383,658.63</b>
<b>200</b>	<b><u>Personnel Services – Employee Benefits</u></b>			
	210 Group Insurance – Contracted Provider			1,647.59
	220 Social Security Contributions			28,656.14
	230 PSERS Retirement Contributions			126,444.53
	250 Unemployment Compensation			573.06
	260 Workers' Compensation			3,467.97
	270 Group Insurance – Self-Insurance			72,180.17
	292 Health Savings Accounts			11,457.69
<b>Total Personnel Services – Employee Benefits</b>				<b>\$244,427.15</b>
<b>300</b>	<b><u>Purchased Professional and Technical Services</u></b>			
	330 Other Professional Services			37,800.00
<b>Total Purchased Professional and Technical Services</b>				<b>\$37,800.00</b>
<b>500</b>	<b><u>Other Purchased Services</u></b>			
	530 Communications			45,733.08
<b>Total Other Purchased Services</b>				<b>\$45,733.08</b>
<b>600</b>	<b><u>Supplies</u></b>			
	610 General Supplies			3,489.21
<b>Total Supplies</b>				<b>\$3,489.21</b>
<b>800</b>	<b><u>Other Objects</u></b>			
	810 Dues and Fees			3,780.01
<b>Total Other Objects</b>				<b>\$3,780.01</b>
<b>Total 2513 Receiving and Disbursing Funds Services</b>				<b>\$718,888.08</b>

**General Fund (10)**

**2514 Payroll Services**

	<u>Elementary</u>	<u>Secondary</u>	<u>Federal</u>	<u>Total</u>
<b>100 Personnel Services – Salaries</b>				
100 Personnel Services – Salaries				59,574.26
<b>Total Personnel Services – Salaries</b>				<b>\$59,574.26</b>
<b>200 Personnel Services – Employee Benefits</b>				
210 Group Insurance – Contracted Provider				283.32
220 Social Security Contributions				4,294.20
230 PSERS Retirement Contributions				20,001.29
250 Unemployment Compensation				80.00
260 Workers' Compensation				538.58
270 Group Insurance – Self-Insurance				17,548.42
292 Health Savings Accounts				1,800.00
<b>Total Personnel Services – Employee Benefits</b>				<b>\$44,545.81</b>
<b>Total 2514 Payroll Services</b>				<b>\$104,120.07</b>

LEA : 124151902 Coatesville Area SD

Printed 3/31/2022 2:28:00 PM

General Fund (10)

2519 Other Fiscal Services

Elementary

Secondary

Federal

Total

800 Other Objects

830 Interest

182,900.00

**Total Other Objects**

**\$182,900.00**

**Total 2519 Other Fiscal Services**

**\$182,900.00**

**General Fund (10)**

**2520 Purchasing Services**

Elementary                      Secondary                      Federal                      Total

<b>100</b>	<b><u>Personnel Services – Salaries</u></b>				
	100 Personnel Services – Salaries				43,656.00
<b>Total Personnel Services – Salaries</b>					<b>\$43,656.00</b>
<b>200</b>	<b><u>Personnel Services – Employee Benefits</u></b>				
	210 Group Insurance – Contracted Provider				193.59
	220 Social Security Contributions				3,303.12
	230 PSERS Retirement Contributions				14,858.61
	250 Unemployment Compensation				159.98
	260 Workers' Compensation				394.62
	270 Group Insurance – Self-Insurance				16,363.14
	292 Health Savings Accounts				3,000.00
<b>Total Personnel Services – Employee Benefits</b>					<b>\$38,273.06</b>
<b>600</b>	<b><u>Supplies</u></b>				
	650 Supplies & Fees – Technology Related				284.97
<b>Total Supplies</b>					<b>\$284.97</b>
<b>Total 2520 Purchasing Services</b>					<b>\$82,214.03</b>

**General Fund (10)**

**2600 Operation and Maintenance of Plant Services**

Elementary                      Secondary                      Federal                      Total

**100 Personnel Services – Salaries**

100 Personnel Services – Salaries 1,423,183.64

**Total Personnel Services – Salaries \$1,423,183.64**

**200 Personnel Services – Employee Benefits**

210 Group Insurance – Contracted Provider 5,121.91

220 Social Security Contributions 104,808.19

230 PSERS Retirement Contributions 481,297.22

250 Unemployment Compensation 2,856.23

260 Workers' Compensation 12,866.14

270 Group Insurance – Self-Insurance 518,382.32

292 Health Savings Accounts 5,400.00

**Total Personnel Services – Employee Benefits \$1,130,732.01**

**300 Purchased Professional and Technical Services**

330 Other Professional Services 2,979.80

350 Security / Safety Services 71,309.76

390 Other Purchased Professional and Technical Services 27,175.00 122,316.00

**Total Purchased Professional and Technical Services \$27,175.00 \$196,605.56**

**400 Purchased Property Services**

410 Cleaning Services 120,924.24 1,813,674.28

420 Utility Services 230,767.43

430 Repairs and Maintenance Services 208,720.00 519,030.74

440 Rentals 51,520.00 68,865.41

460 Extermination Services 12,803.00

490 Other Purchased Property Services 3,657.31

**Total Purchased Property Services \$381,164.24 \$2,648,798.17**

**500 Other Purchased Services**

522 Automotive Liability Insurance 15,748.00

523 General Property and Liability Insurance 349,310.80

529 Other Insurance 208,781.00

**Total Other Purchased Services \$573,839.80**

**600 Supplies**

610 General Supplies 144,479.20 164,727.01 472,777.19 781,983.40

620 Energy 1,438,314.18

650 Supplies & Fees – Technology Related 24,750.00

**Total Supplies \$144,479.20 \$164,727.01 \$472,777.19 \$2,245,047.58**

**700 Property**

752 Capital Equipment – Original and Additional 13,655.80

**Total Property \$13,655.80**

**800 Other Objects**

810 Dues and Fees 4,964.75

**Total Other Objects \$4,964.75**

**Total 2600 Operation and Maintenance of Plant Services**

**\$144,479.20                      \$164,727.01                      \$881,116.43                      \$8,236,827.31**

**General Fund (10)**

2610 Supervision of Operation and Maintenance of Plant Services	<u>Elementary</u>	<u>Secondary</u>	<u>Federal</u>	<u>Total</u>
<b>100 Personnel Services – Salaries</b>				
100 Personnel Services – Salaries				110,769.25
<b>Total Personnel Services – Salaries</b>				<b>\$110,769.25</b>
<b>200 Personnel Services – Employee Benefits</b>				
210 Group Insurance – Contracted Provider				428.48
220 Social Security Contributions				8,430.73
230 PSERS Retirement Contributions				37,374.42
250 Unemployment Compensation				245.76
260 Workers' Compensation				1,001.41
270 Group Insurance – Self-Insurance				13,274.46
292 Health Savings Accounts				2,400.00
<b>Total Personnel Services – Employee Benefits</b>				<b>\$63,155.26</b>
<b>300 Purchased Professional and Technical Services</b>				
330 Other Professional Services				805.00
390 Other Purchased Professional and Technical Services				56,856.30
<b>Total Purchased Professional and Technical Services</b>				<b>\$57,661.30</b>
<b>Total 2610 Supervision of Operation and Maintenance of Plant Services</b>				<b>\$231,585.81</b>

**General Fund (10)**

**2611 Supervision of Operation and Maintenance of Plant Services – Head of Component**

Elementary

Secondary

Federal

Total

**100 Personnel Services – Salaries**

100 Personnel Services – Salaries

110,769.25

**Total Personnel Services – Salaries**

**\$110,769.25**

**200 Personnel Services – Employee Benefits**

210 Group Insurance – Contracted Provider

428.48

220 Social Security Contributions

8,430.73

230 PSERS Retirement Contributions

37,374.42

250 Unemployment Compensation

245.76

260 Workers' Compensation

1,001.41

270 Group Insurance – Self-Insurance

13,274.46

292 Health Savings Accounts

2,400.00

**Total Personnel Services – Employee Benefits**

**\$63,155.26**

**300 Purchased Professional and Technical Services**

330 Other Professional Services

805.00

390 Other Purchased Professional and Technical Services

56,856.30

**Total Purchased Professional and Technical Services**

**\$57,661.30**

**Total 2611 Supervision of Operation and Maintenance of Plant Services – Head of Component**

**\$231,585.81**

**General Fund (10)**

**2620 Operation of Buildings Services**

**100 Personnel Services – Salaries**

100 Personnel Services – Salaries				1,133,787.18
-----------------------------------	--	--	--	--------------

<b>Total Personnel Services – Salaries</b>				<b>\$1,133,787.18</b>
--------------------------------------------	--	--	--	-----------------------

**200 Personnel Services – Employee Benefits**

210 Group Insurance – Contracted Provider				4,035.71
-------------------------------------------	--	--	--	----------

220 Social Security Contributions				83,142.22
-----------------------------------	--	--	--	-----------

230 PSERS Retirement Contributions				383,773.49
------------------------------------	--	--	--	------------

250 Unemployment Compensation				2,370.47
-------------------------------	--	--	--	----------

260 Workers' Compensation				10,249.91
---------------------------	--	--	--	-----------

270 Group Insurance – Self-Insurance				437,364.24
--------------------------------------	--	--	--	------------

<b>Total Personnel Services – Employee Benefits</b>				<b>\$920,936.04</b>
-----------------------------------------------------	--	--	--	---------------------

**300 Purchased Professional and Technical Services**

390 Other Purchased Professional and Technical Services			27,175.00	65,459.70
---------------------------------------------------------	--	--	-----------	-----------

<b>Total Purchased Professional and Technical Services</b>			<b>\$27,175.00</b>	<b>\$65,459.70</b>
------------------------------------------------------------	--	--	--------------------	--------------------

**400 Purchased Property Services**

410 Cleaning Services			120,924.24	1,406,271.44
-----------------------	--	--	------------	--------------

420 Utility Services				230,767.43
----------------------	--	--	--	------------

430 Repairs and Maintenance Services			208,720.00	500,516.42
--------------------------------------	--	--	------------	------------

440 Rentals			51,520.00	64,198.44
-------------	--	--	-----------	-----------

460 Extermination Services				12,803.00
----------------------------	--	--	--	-----------

490 Other Purchased Property Services				3,657.31
---------------------------------------	--	--	--	----------

<b>Total Purchased Property Services</b>			<b>\$381,164.24</b>	<b>\$2,218,214.04</b>
------------------------------------------	--	--	---------------------	-----------------------

**500 Other Purchased Services**

522 Automotive Liability Insurance				15,748.00
------------------------------------	--	--	--	-----------

523 General Property and Liability Insurance				349,310.80
----------------------------------------------	--	--	--	------------

529 Other Insurance				208,781.00
---------------------	--	--	--	------------

<b>Total Other Purchased Services</b>				<b>\$573,839.80</b>
---------------------------------------	--	--	--	---------------------

**600 Supplies**

610 General Supplies	106,513.69		126,761.51	472,777.19	706,052.39
----------------------	------------	--	------------	------------	------------

620 Energy					1,438,314.18
------------	--	--	--	--	--------------

<b>Total Supplies</b>	<b>\$106,513.69</b>	<b>\$126,761.51</b>	<b>\$472,777.19</b>		<b>\$2,144,366.57</b>
-----------------------	---------------------	---------------------	---------------------	--	-----------------------

**700 Property**

752 Capital Equipment – Original and Additional					13,655.80
-------------------------------------------------	--	--	--	--	-----------

<b>Total Property</b>					<b>\$13,655.80</b>
-----------------------	--	--	--	--	--------------------

**800 Other Objects**

810 Dues and Fees					4,889.75
-------------------	--	--	--	--	----------

<b>Total Other Objects</b>					<b>\$4,889.75</b>
----------------------------	--	--	--	--	-------------------

<b>Total 2620 Operation of Buildings Services</b>	<b>\$106,513.69</b>	<b>\$126,761.51</b>	<b>\$881,116.43</b>		<b>\$7,075,148.88</b>
---------------------------------------------------	---------------------	---------------------	---------------------	--	-----------------------



**General Fund (10)**

	<u>Elementary</u>	<u>Secondary</u>	<u>Federal</u>	<u>Total</u>
<b>2630 Care and Upkeep of Grounds Services</b>				
<b>100 <u>Personnel Services – Salaries</u></b>				
100 Personnel Services – Salaries				96,198.47
<b>Total Personnel Services – Salaries</b>				<b>\$96,198.47</b>
<b>200 <u>Personnel Services – Employee Benefits</u></b>				
210 Group Insurance – Contracted Provider				333.36
220 Social Security Contributions				6,978.12
230 PSERS Retirement Contributions				33,198.24
250 Unemployment Compensation				160.00
260 Workers' Compensation				869.76
270 Group Insurance – Self-Insurance				44,771.27
<b>Total Personnel Services – Employee Benefits</b>				<b>\$86,310.75</b>
<b>300 <u>Purchased Professional and Technical Services</u></b>				
330 Other Professional Services				390.00
<b>Total Purchased Professional and Technical Services</b>				<b>\$390.00</b>
<b>400 <u>Purchased Property Services</u></b>				
410 Cleaning Services				407,402.84
<b>Total Purchased Property Services</b>				<b>\$407,402.84</b>
<b>Total 2630 Care and Upkeep of Grounds Services</b>				<b>\$590,302.06</b>

LEA : 124151902 Coatesville Area SD

Printed 3/31/2022 2:28:00 PM

General Fund (10)

2640 Care and Upkeep of Equipment Services

Elementary

Secondary

Federal

Total

400 Purchased Property Services

430 Repairs and Maintenance Services

25.24

**Total Purchased Property Services**

**\$25.24**

**Total 2640 Care and Upkeep of Equipment Services**

**\$25.24**

General Fund (10)

	<u>Elementary</u>	<u>Secondary</u>	<u>Federal</u>	<u>Total</u>
<b>2650 Vehicle Operation and Maintenance Services (Other Than Student Transportation Vehicles)</b>				
<b>400 <u>Purchased Property Services</u></b>				
430 Repairs and Maintenance Services				18,489.08
440 Rentals				4,666.97
<b>Total Purchased Property Services</b>				<b>\$23,156.05</b>
<b>Total 2650 Vehicle Operation and Maintenance Services (Other Than Student Transportation Vehicles)</b>				<b>\$23,156.05</b>

**General Fund (10)**

**2660 Safety and Security Services**

**100 Personnel Services – Salaries**

	<u>Elementary</u>	<u>Secondary</u>	<u>Federal</u>	<u>Total</u>
100 Personnel Services – Salaries				82,428.74
<b>Total Personnel Services – Salaries</b>				<b>\$82,428.74</b>

**200 Personnel Services – Employee Benefits**

210 Group Insurance – Contracted Provider				324.36
220 Social Security Contributions				6,257.12
230 PSERS Retirement Contributions				26,951.07
250 Unemployment Compensation				80.00
260 Workers' Compensation				745.06
270 Group Insurance – Self-Insurance				22,972.35
292 Health Savings Accounts				3,000.00
<b>Total Personnel Services – Employee Benefits</b>				<b>\$60,329.96</b>

**300 Purchased Professional and Technical Services**

330 Other Professional Services				1,784.80
350 Security / Safety Services				71,309.76
<b>Total Purchased Professional and Technical Services</b>				<b>\$73,094.56</b>

**600 Supplies**

610 General Supplies	37,965.51	37,965.50		75,931.01
650 Supplies & Fees – Technology Related				24,750.00
<b>Total Supplies</b>	<b>\$37,965.51</b>	<b>\$37,965.50</b>		<b>\$100,681.01</b>

**800 Other Objects**

810 Dues and Fees				75.00
<b>Total Other Objects</b>				<b>\$75.00</b>

**Total 2660 Safety and Security Services**

	<b>\$37,965.51</b>	<b>\$37,965.50</b>		<b>\$316,609.27</b>
--	--------------------	--------------------	--	---------------------

**General Fund (10)**

	<u>Elementary</u>	<u>Secondary</u>	<u>Federal</u>	<u>Total</u>
<b>2700 Student Transportation Services</b>				
<b>100 Personnel Services – Salaries</b>				
100 Personnel Services – Salaries				153,987.55
<b>Total Personnel Services – Salaries</b>				<b>\$153,987.55</b>
<b>200 Personnel Services – Employee Benefits</b>				
210 Group Insurance – Contracted Provider				677.34
220 Social Security Contributions				11,604.63
230 PSERS Retirement Contributions				52,159.90
250 Unemployment Compensation				288.25
260 Workers' Compensation				1,391.97
270 Group Insurance – Self-Insurance				46,522.24
292 Health Savings Accounts				4,450.00
<b>Total Personnel Services – Employee Benefits</b>				<b>\$117,094.33</b>
<b>300 Purchased Professional and Technical Services</b>				
390 Other Purchased Professional and Technical Services			24,229.00	48,197.69
<b>Total Purchased Professional and Technical Services</b>			<b>\$24,229.00</b>	<b>\$48,197.69</b>
<b>500 Other Purchased Services</b>				
513 Contracted Carriers				8,187,990.96
516 Student Transportation Services From the IU				70,574.34
<b>Total Other Purchased Services</b>				<b>\$8,258,565.30</b>
<b>600 Supplies</b>				
610 General Supplies				3,469.48
<b>Total Supplies</b>				<b>\$3,469.48</b>
<b>Total 2700 Student Transportation Services</b>			<b>\$24,229.00</b>	<b>\$8,581,314.35</b>

**General Fund (10)**

**2710 Supervision of Student Transportation Services**

Elementary                      Secondary                      Federal                      Total

<b>100</b>	<b><u>Personnel Services – Salaries</u></b>			
	100 Personnel Services – Salaries			153,987.55
<b>Total Personnel Services – Salaries</b>				<b>\$153,987.55</b>
<b>200</b>	<b><u>Personnel Services – Employee Benefits</u></b>			
	210 Group Insurance – Contracted Provider			677.34
	220 Social Security Contributions			11,604.63
	230 PSERS Retirement Contributions			52,159.90
	250 Unemployment Compensation			288.25
	260 Workers' Compensation			1,391.97
	270 Group Insurance – Self-Insurance			46,522.24
	292 Health Savings Accounts			4,450.00
<b>Total Personnel Services – Employee Benefits</b>				<b>\$117,094.33</b>
<b>300</b>	<b><u>Purchased Professional and Technical Services</u></b>			
	390 Other Purchased Professional and Technical Services		24,229.00	48,197.69
<b>Total Purchased Professional and Technical Services</b>			<b>\$24,229.00</b>	<b>\$48,197.69</b>
<b>600</b>	<b><u>Supplies</u></b>			
	610 General Supplies			3,469.48
<b>Total Supplies</b>				<b>\$3,469.48</b>
<b>Total 2710 Supervision of Student Transportation Services</b>			<b>\$24,229.00</b>	<b>\$322,749.05</b>

**General Fund (10)**

**2711 Supervision of Student Transportation Services – Head of Component**

	<u>Elementary</u>	<u>Secondary</u>	<u>Federal</u>	<u>Total</u>
<b>100 Personnel Services – Salaries</b>				
100 Personnel Services – Salaries				153,987.55
<b>Total Personnel Services – Salaries</b>				<b>\$153,987.55</b>
<b>200 Personnel Services – Employee Benefits</b>				
210 Group Insurance – Contracted Provider				677.34
220 Social Security Contributions				11,604.63
230 PSERS Retirement Contributions				52,159.90
250 Unemployment Compensation				288.25
260 Workers' Compensation				1,391.97
270 Group Insurance – Self-Insurance				46,522.24
292 Health Savings Accounts				4,450.00
<b>Total Personnel Services – Employee Benefits</b>				<b>\$117,094.33</b>
<b>300 Purchased Professional and Technical Services</b>				
390 Other Purchased Professional and Technical Services			24,229.00	48,197.69
<b>Total Purchased Professional and Technical Services</b>			<b>\$24,229.00</b>	<b>\$48,197.69</b>
<b>600 Supplies</b>				
610 General Supplies				3,469.48
<b>Total Supplies</b>				<b>\$3,469.48</b>
<b>Total 2711 Supervision of Student Transportation Services – Head of Component</b>			<b>\$24,229.00</b>	<b>\$322,749.05</b>

LEA : 124151902 Coatesville Area SD

Printed 3/31/2022 2:28:00 PM

General Fund (10)

2720 Vehicle Operation Services

Elementary

Secondary

Federal

Total

500 Other Purchased Services

513 Contracted Carriers

7,294,259.61

516 Student Transportation Services From the IU

70,574.34

**Total Other Purchased Services**

**\$7,364,833.95**

**Total 2720 Vehicle Operation Services**

**\$7,364,833.95**



General Fund (10)

2750 Nonpublic Transportation

Elementary

Secondary

Federal

Total

500 Other Purchased Services

513 Contracted Carriers

893,731.35

**Total Other Purchased Services**

**\$893,731.35**

**Total 2750 Nonpublic Transportation**

**\$893,731.35**

**General Fund (10)**

	<u>Elementary</u>	<u>Secondary</u>	<u>Federal</u>	<u>Total</u>
<b>2800 Support Services – Central</b>				
<b>100 Personnel Services – Salaries</b>				
100 Personnel Services – Salaries				348,594.72
<b>Total Personnel Services – Salaries</b>				<b>\$348,594.72</b>
<b>200 Personnel Services – Employee Benefits</b>				
210 Group Insurance – Contracted Provider				1,323.02
220 Social Security Contributions				26,193.26
230 PSERS Retirement Contributions				113,212.58
240 Tuition Reimbursement				(5,453.00)
250 Unemployment Compensation				313.07
260 Workers' Compensation				3,151.78
270 Group Insurance – Self-Insurance				62,865.21
292 Health Savings Accounts				10,500.00
<b>Total Personnel Services – Employee Benefits</b>				<b>\$212,105.92</b>
<b>300 Purchased Professional and Technical Services</b>				
330 Other Professional Services			14,685.30	92,125.28
340 Technical Services				670,021.00
360 Employee Training and Development Services			788.75	3,740.75
390 Other Purchased Professional and Technical Services				2,055.63
<b>Total Purchased Professional and Technical Services</b>			<b>\$15,474.05</b>	<b>\$767,942.66</b>
<b>400 Purchased Property Services</b>				
430 Repairs and Maintenance Services				2,651.05
440 Rentals				461,092.56
<b>Total Purchased Property Services</b>				<b>\$463,743.61</b>
<b>500 Other Purchased Services</b>				
520 Insurance – General			75,612.40	113,418.60
530 Communications			220,020.00	532,331.45
<b>Total Other Purchased Services</b>			<b>\$295,632.40</b>	<b>\$645,750.05</b>
<b>600 Supplies</b>				
610 General Supplies				11,953.52
650 Supplies & Fees – Technology Related			271,504.95	637,655.07
<b>Total Supplies</b>			<b>\$271,504.95</b>	<b>\$649,608.59</b>
<b>800 Other Objects</b>				
810 Dues and Fees				1,692.00
<b>Total Other Objects</b>				<b>\$1,692.00</b>
<b>Total 2800 Support Services – Central</b>			<b>\$582,611.40</b>	<b>\$3,089,437.55</b>

**General Fund (10)**

**2830 Staff Services**

	<u>Elementary</u>	<u>Secondary</u>	<u>Federal</u>	<u>Total</u>
<b>100 Personnel Services – Salaries</b>				
100 Personnel Services – Salaries				348,594.72
<b>Total Personnel Services – Salaries</b>				<b>\$348,594.72</b>
<b>200 Personnel Services – Employee Benefits</b>				
210 Group Insurance – Contracted Provider				1,323.02
220 Social Security Contributions				26,193.26
230 PSERS Retirement Contributions				113,212.58
240 Tuition Reimbursement				(5,453.00)
250 Unemployment Compensation				313.07
260 Workers' Compensation				3,151.78
270 Group Insurance – Self-Insurance				62,865.21
292 Health Savings Accounts				10,500.00
<b>Total Personnel Services – Employee Benefits</b>				<b>\$212,105.92</b>
<b>300 Purchased Professional and Technical Services</b>				
330 Other Professional Services			14,685.30	92,125.28
360 Employee Training and Development Services			788.75	3,740.75
390 Other Purchased Professional and Technical Services				2,055.63
<b>Total Purchased Professional and Technical Services</b>			<b>\$15,474.05</b>	<b>\$97,921.66</b>
<b>600 Supplies</b>				
610 General Supplies				492.64
<b>Total Supplies</b>				<b>\$492.64</b>
<b>800 Other Objects</b>				
810 Dues and Fees				1,642.00
<b>Total Other Objects</b>				<b>\$1,642.00</b>
<b>Total 2830 Staff Services</b>			<b>\$15,474.05</b>	<b>\$660,756.94</b>

LEA : 124151902 Coatesville Area SD

Printed 3/31/2022 2:28:00 PM

General Fund (10)

2832 Recruitment and Placement Services

Elementary

Secondary

Federal

Total

300 Purchased Professional and Technical Services

330 Other Professional Services

72,045.38

390 Other Purchased Professional and Technical Services

2,055.63

**Total Purchased Professional and Technical Services**

**\$74,101.01**

600 Supplies

610 General Supplies

492.64

**Total Supplies**

**\$492.64**

800 Other Objects

810 Dues and Fees

1,642.00

**Total Other Objects**

**\$1,642.00**

**Total 2832 Recruitment and Placement Services**

**\$76,235.65**

General Fund (10)

2833 Staff Accounting Services

Elementary

Secondary

Federal

Total

100 Personnel Services – Salaries

100 Personnel Services – Salaries

348,594.72

**Total Personnel Services – Salaries**

**\$348,594.72**

200 Personnel Services – Employee Benefits

210 Group Insurance – Contracted Provider

1,323.02

220 Social Security Contributions

26,193.26

230 PSERS Retirement Contributions

113,212.58

250 Unemployment Compensation

313.07

260 Workers' Compensation

3,151.78

270 Group Insurance – Self-Insurance

62,865.21

292 Health Savings Accounts

10,500.00

**Total Personnel Services – Employee Benefits**

**\$217,558.92**

**Total 2833 Staff Accounting Services**

**\$566,153.64**

General Fund (10)

2834 Staff Development Services – Non-Instructional, Certified Staff Only

Elementary

Secondary

Federal

Total

200 Personnel Services – Employee Benefits

240 Tuition Reimbursement

(5,453.00)

**Total Personnel Services – Employee Benefits**

**(\$5,453.00)**

300 Purchased Professional and Technical Services

360 Employee Training and Development Services

1,382.00

**Total Purchased Professional and Technical Services**

**\$1,382.00**

**Total 2834 Staff Development Services – Non-Instructional, Certified Staff Only**

**(\$4,071.00)**

General Fund (10)

2835 Health Services

300 Purchased Professional and Technical Services

330 Other Professional Services

**Total Purchased Professional and Technical Services**

**Total 2835 Health Services**

Elementary

Secondary

Federal

Total

14,685.30

20,079.90

**\$14,685.30**

**\$20,079.90**

**\$14,685.30**

**\$20,079.90**

General Fund (10)

2836 Staff Development Services – Non-Instructional, Non-Certified Staff Only

Elementary

Secondary

Federal

Total

300 Purchased Professional and Technical Services

360 Employee Training and Development Services

788.75

2,358.75

**Total Purchased Professional and Technical Services**

**\$788.75**

**\$2,358.75**

**Total 2836 Staff Development Services – Non-Instructional, Non-Certified Staff Only**

**\$788.75**

**\$2,358.75**



**General Fund (10)**

	<u>Elementary</u>	<u>Secondary</u>	<u>Federal</u>	<u>Total</u>
<b>2840 Data Processing Services</b>				
<b>300 <u>Purchased Professional and Technical Services</u></b>				
340 Technical Services				670,021.00
<b>Total Purchased Professional and Technical Services</b>				<b>\$670,021.00</b>
<b>400 <u>Purchased Property Services</u></b>				
430 Repairs and Maintenance Services				2,651.05
440 Rentals				461,092.56
<b>Total Purchased Property Services</b>				<b>\$463,743.61</b>
<b>500 <u>Other Purchased Services</u></b>				
520 Insurance – General			75,612.40	113,418.60
530 Communications			220,020.00	532,331.45
<b>Total Other Purchased Services</b>			<b>\$295,632.40</b>	<b>\$645,750.05</b>
<b>600 <u>Supplies</u></b>				
610 General Supplies				11,460.88
650 Supplies & Fees – Technology Related			271,504.95	637,655.07
<b>Total Supplies</b>			<b>\$271,504.95</b>	<b>\$649,115.95</b>
<b>800 <u>Other Objects</u></b>				
810 Dues and Fees				50.00
<b>Total Other Objects</b>				<b>\$50.00</b>
<b>Total 2840 Data Processing Services</b>			<b>\$567,137.35</b>	<b>\$2,428,680.61</b>

LEA : 124151902 Coatesville Area SD

Printed 3/31/2022 2:28:00 PM

General Fund (10)

2900 Other Support Services

Elementary

Secondary

Federal

Total

500 Other Purchased Services

530 Communications

104,061.99

595 IU Payments By Withholding

48,055.83

**Total Other Purchased Services**

**\$152,117.82**

**Total 2900 Other Support Services**

**\$152,117.82**

LEA : 124151902 Coatesville Area SD

Printed 3/31/2022 2:28:00 PM

General Fund (10)

2910 Support Services Not Listed Elsewhere In the 2000 Series

Elementary

Secondary

Federal

Total

500 Other Purchased Services

530 Communications

104,061.99

595 IU Payments By Withholding

48,055.83

**Total Other Purchased Services**

**\$152,117.82**

**Total 2910 Support Services Not Listed Elsewhere In the 2000 Series**

**\$152,117.82**

General Fund (10)

<b>3000 Operation of Non-Instructional Services</b>	<b><u>Total</u></b>
<b>100 Personnel Services – Salaries</b>	
100 Personnel Services – Salaries	556,144.99
<b>Total Personnel Services – Salaries</b>	<b>\$556,144.99</b>
<b>200 Personnel Services – Employee Benefits</b>	
210 Group Insurance – Contracted Provider	652.68
220 Social Security Contributions	41,277.96
230 PSERS Retirement Contributions	176,047.19
250 Unemployment Compensation	2,066.53
260 Workers’ Compensation	5,015.56
270 Group Insurance – Self-Insurance	46,513.02
292 Health Savings Accounts	4,800.00
<b>Total Personnel Services – Employee Benefits</b>	<b>\$276,372.94</b>
<b>300 Purchased Professional and Technical Services</b>	
330 Other Professional Services	58,817.00
390 Other Purchased Professional and Technical Services	2,567.00
<b>Total Purchased Professional and Technical Services</b>	<b>\$61,384.00</b>
<b>400 Purchased Property Services</b>	
430 Repairs and Maintenance Services	20,120.14
440 Rentals	1,377.30
<b>Total Purchased Property Services</b>	<b>\$21,497.44</b>
<b>500 Other Purchased Services</b>	
510 Student Transportation Services	37,623.97
<b>Total Other Purchased Services</b>	<b>\$37,623.97</b>
<b>600 Supplies</b>	
610 General Supplies	65,986.92
630 Food	466.00
640 Books and Periodicals	3,113.10
650 Supplies & Fees – Technology Related	5,386.92
<b>Total Supplies</b>	<b>\$74,952.94</b>
<b>800 Other Objects</b>	
810 Dues and Fees	16,520.40
<b>Total Other Objects</b>	<b>\$16,520.40</b>
<b>Total 3000 Operation of Non-Instructional Services</b>	<b>\$1,044,496.68</b>

**General Fund (10)**

**3200 Student Activities**

	<u>Elementary</u>	<u>Secondary</u>	<u>Federal</u>	<u>Total</u>
<b>100 Personnel Services – Salaries</b>				
100 Personnel Services – Salaries			8,150.00	555,270.49
<b>Total Personnel Services – Salaries</b>			<b>\$8,150.00</b>	<b>\$555,270.49</b>
<b>200 Personnel Services – Employee Benefits</b>				
210 Group Insurance – Contracted Provider				652.68
220 Social Security Contributions			620.26	41,213.73
230 PSERS Retirement Contributions			2,553.76	175,745.41
250 Unemployment Compensation			38.40	2,066.13
260 Workers' Compensation			73.67	5,007.64
270 Group Insurance – Self-Insurance				46,513.02
292 Health Savings Accounts				4,800.00
<b>Total Personnel Services – Employee Benefits</b>			<b>\$3,286.09</b>	<b>\$275,998.61</b>
<b>300 Purchased Professional and Technical Services</b>				
330 Other Professional Services				58,817.00
<b>Total Purchased Professional and Technical Services</b>				<b>\$58,817.00</b>
<b>400 Purchased Property Services</b>				
430 Repairs and Maintenance Services				20,120.14
440 Rentals				1,377.30
<b>Total Purchased Property Services</b>				<b>\$21,497.44</b>
<b>500 Other Purchased Services</b>				
510 Student Transportation Services				37,623.97
<b>Total Other Purchased Services</b>				<b>\$37,623.97</b>
<b>600 Supplies</b>				
610 General Supplies				61,185.51
650 Supplies & Fees – Technology Related				493.16
<b>Total Supplies</b>				<b>\$61,678.67</b>
<b>800 Other Objects</b>				
810 Dues and Fees				16,520.40
<b>Total Other Objects</b>				<b>\$16,520.40</b>
<b>Total 3200 Student Activities</b>			<b>\$11,436.09</b>	<b>\$1,027,406.58</b>

**General Fund (10)**

**3300 Community Services**

**100 Personnel Services – Salaries**

	<u>Elementary</u>	<u>Secondary</u>	<u>Federal</u>	<u>Total</u>
100 Personnel Services – Salaries			874.50	874.50
<b>Total Personnel Services – Salaries</b>			<b>\$874.50</b>	<b>\$874.50</b>

**200 Personnel Services – Employee Benefits**

220 Social Security Contributions			64.23	64.23
230 PSERS Retirement Contributions			301.78	301.78
250 Unemployment Compensation			0.40	0.40
260 Workers' Compensation			7.92	7.92
<b>Total Personnel Services – Employee Benefits</b>			<b>\$374.33</b>	<b>\$374.33</b>

**300 Purchased Professional and Technical Services**

390 Other Purchased Professional and Technical Services			2,567.00	2,567.00
<b>Total Purchased Professional and Technical Services</b>			<b>\$2,567.00</b>	<b>\$2,567.00</b>

**600 Supplies**

610 General Supplies			4,801.41	4,801.41
630 Food			466.00	466.00
640 Books and Periodicals			3,113.10	3,113.10
650 Supplies & Fees – Technology Related			4,893.76	4,893.76
<b>Total Supplies</b>			<b>\$13,274.27</b>	<b>\$13,274.27</b>

**Total 3300 Community Services**

			<b>\$17,090.10</b>	<b>\$17,090.10</b>
--	--	--	--------------------	--------------------

**General Fund (10)**

**5000 Other Expenditures and Financing Uses**

**Total**

**800 Other Objects**

830 Interest	5,221,191.25
880 Refunds of Prior Years' Receipts	1,550.28

<b>Total Other Objects</b>	<b>\$5,222,741.53</b>
----------------------------	-----------------------

**900 Other Uses of Funds**

910 Redemption of Principal	996,751.28
920 Authority Obligations	1,290,000.00
939 Other Fund Transfers	95,424.00

<b>Total Other Uses of Funds</b>	<b>\$2,382,175.28</b>
----------------------------------	-----------------------

<b>Total 5000 Other Expenditures and Financing Uses</b>	<b>\$7,604,916.81</b>
---------------------------------------------------------	-----------------------

LEA : 124151902 Coatesville Area SD

Printed 3/31/2022 2:28:13 PM

General Fund (10)

5100 Debt Service / Other Expenditures and Financing Uses	<u>Elementary</u>	<u>Secondary</u>	<u>Federal</u>	<u>Total</u>
<b>800 Other Objects</b>				
830 Interest				5,221,191.25
880 Refunds of Prior Years' Receipts				1,550.28
<b>Total Other Objects</b>				<b>\$5,222,741.53</b>
<b>900 Other Uses of Funds</b>				
910 Redemption of Principal				996,751.28
920 Authority Obligations				1,290,000.00
<b>Total Other Uses of Funds</b>				<b>\$2,286,751.28</b>
<b>Total 5100 Debt Service / Other Expenditures and Financing Uses</b>				<b>\$7,509,492.81</b>



LEA : 124151902 Coatesville Area SD

Printed 3/31/2022 2:28:13 PM

General Fund (10)

5110 Debt Service

Elementary

Secondary

Federal

Total

800 Other Objects

830 Interest

5,221,191.25

**Total Other Objects**

**\$5,221,191.25**

900 Other Uses of Funds

910 Redemption of Principal

996,751.28

920 Authority Obligations

1,290,000.00

**Total Other Uses of Funds**

**\$2,286,751.28**

**Total 5110 Debt Service**

**\$7,507,942.53**

LEA : 124151902 Coatesville Area SD

Printed 3/31/2022 2:28:13 PM

General Fund (10)

5130 Refund of Prior Year Revenues / Receipts

Elementary

Secondary

Federal

Total

800 Other Objects

880 Refunds of Prior Years' Receipts

1,550.28

**Total Other Objects**

**\$1,550.28**

**Total 5130 Refund of Prior Year Revenues / Receipts**

**\$1,550.28**

LEA : 124151902 Coatesville Area SD

Printed 3/31/2022 2:28:13 PM

General Fund (10)

	<u>Elementary</u>	<u>Secondary</u>	<u>Federal</u>	<u>Total</u>
5200 Interfund Transfers – Out				
900 <u>Other Uses of Funds</u>				
939 Other Fund Transfers			95,424.00	95,424.00
<b>Total Other Uses of Funds</b>			<b>\$95,424.00</b>	<b>\$95,424.00</b>
<b>Total 5200 Interfund Transfers – Out</b>			<b>\$95,424.00</b>	<b>\$95,424.00</b>

LEA : 124151902 Coatesville Area SD

Printed 3/31/2022 2:28:13 PM

General Fund (10)

	<u>Elementary</u>	<u>Secondary</u>	<u>Federal</u>	<u>Total</u>
<b>5250 Enterprise Fund Transfers</b>				
<b>900 Other Uses of Funds</b>				
939 Other Fund Transfers			95,424.00	95,424.00
<b>Total Other Uses of Funds</b>			<b>\$95,424.00</b>	<b>\$95,424.00</b>
<b>Total 5250 Enterprise Fund Transfers</b>			<b>\$95,424.00</b>	<b>\$95,424.00</b>

LEA : 124151902 Coatesville Area SD

Printed 3/31/2022 2:28:03 PM

**Capital Reserve Fund - § 1431 (32)**

**2000 Support Services**

**600 Supplies**

650 Supplies & Fees – Technology Related

**Total**

127,572.00

<b>Total Supplies</b>	<b>\$127,572.00</b>
<b>Total 2000 Support Services</b>	<b>\$127,572.00</b>

LEA : 124151902 Coatesville Area SD

Printed 3/31/2022 2:28:03 PM

Capital Reserve Fund - § 1431 (32)

2800 Support Services – Central

Elementary

Secondary

Federal

Total

600 Supplies

650 Supplies & Fees – Technology Related

127,572.00

**Total Supplies**

**\$127,572.00**

**Total 2800 Support Services – Central**

**\$127,572.00**

LEA : 124151902 Coatesville Area SD

Printed 3/31/2022 2:28:03 PM

Capital Reserve Fund - § 1431 (32)

2840 Data Processing Services

Elementary

Secondary

Federal

Total

600 Supplies

650 Supplies & Fees – Technology Related

127,572.00

**Total Supplies**

**\$127,572.00**

**Total 2840 Data Processing Services**

**\$127,572.00**

LEA : 124151902 Coatesville Area SD

Printed 3/31/2022 2:28:07 PM

**Other Capital Projects Fund (39)**

**2000 Support Services**

**700 Property**

752 Capital Equipment – Original and Additional

**Total**

66,472.14

**Total Property** **\$66,472.14**

**Total 2000 Support Services** **\$66,472.14**



LEA : 124151902 Coatesville Area SD

Printed 3/31/2022 2:28:07 PM

Other Capital Projects Fund (39)

2600 Operation and Maintenance of Plant Services

Elementary

Secondary

Federal

Total

700 Property

752 Capital Equipment – Original and Additional

66,472.14

**Total Property**

**\$66,472.14**

**Total 2600 Operation and Maintenance of Plant Services**

**\$66,472.14**

LEA : 124151902 Coatesville Area SD

Printed 3/31/2022 2:28:07 PM

Other Capital Projects Fund (39)

2650 Vehicle Operation and Maintenance Services (Other Than Student Transportation Vehicles)

Elementary

Secondary

Federal

Total

700 Property

752 Capital Equipment – Original and Additional

66,472.14

**Total Property**

**\$66,472.14**

**Total 2650 Vehicle Operation and Maintenance Services (Other Than Student Transportation Vehicles)**

**\$66,472.14**

LEA : 124151902 Coatesville Area SD

Printed 3/31/2022 2:28:11 PM

**Other Capital Projects Fund (39)**

**4000 Facilities Acquisition, Construction and Improvement Services**

**Total**

**300 Purchased Professional and Technical Services**

330 Other Professional Services 111,340.50

**Total Purchased Professional and Technical Services \$111,340.50**

**400 Purchased Property Services**

430 Repairs and Maintenance Services 28,173.00

450 Construction Services 2,384,546.58

**Total Purchased Property Services \$2,412,719.58**

**700 Property**

756 Capitalized Technology Equipment – Original 16,869.00

766 Capitalized Technology Equipment – Replacement 41,403.00

**Total Property \$58,272.00**

**Total 4000 Facilities Acquisition, Construction and Improvement Services \$2,582,332.08**

LEA : 124151902 Coatesville Area SD

Printed 3/31/2022 2:28:11 PM

Other Capital Projects Fund (39)

	<u>Elementary</u>	<u>Secondary</u>	<u>Federal</u>	<u>Total</u>
<b>4600 Existing Building Improvement Services</b>				
<b>300 <u>Purchased Professional and Technical Services</u></b>				
330 Other Professional Services				111,340.50
<b>Total Purchased Professional and Technical Services</b>				<b>\$111,340.50</b>
<b>400 <u>Purchased Property Services</u></b>				
430 Repairs and Maintenance Services				28,173.00
450 Construction Services				2,384,546.58
<b>Total Purchased Property Services</b>				<b>\$2,412,719.58</b>
<b>700 <u>Property</u></b>				
756 Capitalized Technology Equipment – Original				16,869.00
766 Capitalized Technology Equipment – Replacement				41,403.00
<b>Total Property</b>				<b>\$58,272.00</b>
<b>Total 4600 Existing Building Improvement Services</b>				<b>\$2,582,332.08</b>

LEA : 124151902 Coatesville Area SD

Printed 3/31/2022 2:28:14 PM

**Other Capital Projects Fund (39)**

**5000 Other Expenditures and Financing Uses**

**Total**

**800 Other Objects**

830 Interest 3,508,731.00

**Total Other Objects \$3,508,731.00**

**900 Other Uses of Funds**

910 Redemption of Principal 78,807,495.00

**Total Other Uses of Funds \$78,807,495.00**

**Total 5000 Other Expenditures and Financing Uses \$82,316,226.00**

LEA : 124151902 Coatesville Area SD

Printed 3/31/2022 2:28:14 PM

Other Capital Projects Fund (39)

5100 Debt Service / Other Expenditures and Financing Uses	<u>Elementary</u>	<u>Secondary</u>	<u>Federal</u>	<u>Total</u>
800 <u>Other Objects</u>				
830 Interest				3,508,731.00
<b>Total Other Objects</b>				<b>\$3,508,731.00</b>
900 <u>Other Uses of Funds</u>				
910 Redemption of Principal				78,807,495.00
<b>Total Other Uses of Funds</b>				<b>\$78,807,495.00</b>
<b>Total 5100 Debt Service / Other Expenditures and Financing Uses</b>				<b>\$82,316,226.00</b>

LEA : 124151902 Coatesville Area SD

Printed 3/31/2022 2:28:14 PM

Other Capital Projects Fund (39)

	<u>Elementary</u>	<u>Secondary</u>	<u>Federal</u>	<u>Total</u>
<b>5120 Debt Service – Refunded Bonds</b>				
<b>800 Other Objects</b>				
830 Interest				3,508,731.00
<b>Total Other Objects</b>				<b>\$3,508,731.00</b>
<b>900 Other Uses of Funds</b>				
910 Redemption of Principal				78,807,495.00
<b>Total Other Uses of Funds</b>				<b>\$78,807,495.00</b>
<b>Total 5120 Debt Service – Refunded Bonds</b>				<b>\$82,316,226.00</b>

	<u>General Fund(10)</u>	<u>Student Sponsored Activity Fund(21)</u>	<u>Public Purpose Trust(27)</u>	<u>Other Compt Approved (28)</u>	<u>Athletic / Activity(29)</u>
<b>1000 Instruction</b>					
1100 Regular Programs - Elementary / Secondary	81,071,019.24				
1200 Special Programs - Elementary / Secondary	50,739,159.30				
1300 Vocational Education	3,884,186.51				
1400 Other Instructional Programs - Elementary / Secondary	230,447.23				
1500 Nonpublic School Programs	124,116.69				
1800 Pre-Kindergarten	924.57				
<b>Total Instruction</b>	<b>\$136,049,853.54</b>				
<b>2000 Support Services</b>					
2100 Support Services - Students	3,537,980.13				
2200 Support Services - Instructional Staff	2,553,432.75				
2300 Support Services - Administration	7,315,491.91				
2400 Support Services - Pupil Health	1,026,439.96				
2500 Support Services - Business	1,460,448.58				
2600 Operation and Maintenance of Plant Services	8,236,827.31				
2700 Student Transportation Services	8,581,314.35				
2800 Support Services - Central	3,089,437.55				
2900 Other Support Services	152,117.82				
<b>Total Support Services</b>	<b>\$35,953,490.36</b>				
<b>3000 Operation of Non-Instructional Services</b>					
3200 Student Activities	1,027,406.58				
3300 Community Services	17,090.10				
<b>Total Operation of Non-Instructional Services</b>	<b>\$1,044,496.68</b>				
<b>4000 Facilities Acquisition, Construction and Improvement Services</b>					
4600 Existing Building Improvement Services					
<b>Total Facilities Acquisition, Construction and Improvement Services</b>					
<b>5000 Other Expenditures and Financing Uses</b>					
5100 Debt Service / Other Expenditures and Financing Uses	7,509,492.81				
5200 Interfund Transfers - Out	95,424.00				
<b>Total Other Expenditures and Financing Uses</b>	<b>\$7,604,916.81</b>				
<b>TOTAL ACTUAL EXPENDITURES &amp; OTHER FINANCING USES</b>	<b>\$180,652,757.39</b>				



	<u>Capital Reserve (690.1850)(31)</u>	<u>Capital Reserve (1431)(32)</u>	<u>Other Capital Projects Fund(39)</u>	<u>Debt Service(40)</u>	<u>Permanent(90)</u>
<b>1000 Instruction</b>					
1100 Regular Programs - Elementary / Secondary					
1200 Special Programs - Elementary / Secondary					
1300 Vocational Education					
1400 Other Instructional Programs - Elementary / Secondary					
1500 Nonpublic School Programs					
1800 Pre-Kindergarten					
<b>Total Instruction</b>					
<b>2000 Support Services</b>					
2100 Support Services - Students					
2200 Support Services - Instructional Staff					
2300 Support Services - Administration					
2400 Support Services - Pupil Health					
2500 Support Services - Business					
2600 Operation and Maintenance of Plant Services				66,472.14	
2700 Student Transportation Services					
2800 Support Services - Central		127,572.00			
2900 Other Support Services					
<b>Total Support Services</b>		<b>\$127,572.00</b>		<b>\$66,472.14</b>	
<b>3000 Operation of Non-Instructional Services</b>					
3200 Student Activities					
3300 Community Services					
<b>Total Operation of Non-Instructional Services</b>					
<b>4000 Facilities Acquisition, Construction and Improvement Services</b>					
4600 Existing Building Improvement Services				2,582,332.08	
<b>Total Facilities Acquisition, Construction and Improvement Services</b>				<b>\$2,582,332.08</b>	
<b>5000 Other Expenditures and Financing Uses</b>					
5100 Debt Service / Other Expenditures and Financing Uses				82,316,226.00	
5200 Interfund Transfers - Out					
<b>Total Other Expenditures and Financing Uses</b>				<b>\$82,316,226.00</b>	
<b>TOTAL ACTUAL EXPENDITURES &amp; OTHER FINANCING USES</b>		<b>\$127,572.00</b>		<b>\$84,965,030.22</b>	

**Total**

<b>1000 <u>Instruction</u></b>	
1100 Regular Programs - Elementary / Secondary	81,071,019.24
1200 Special Programs - Elementary / Secondary	50,739,159.30
1300 Vocational Education	3,884,186.51
1400 Other Instructional Programs - Elementary / Secondary	230,447.23
1500 Nonpublic School Programs	124,116.69
1800 Pre-Kindergarten	924.57
<b>Total Instruction</b>	<b>\$136,049,853.54</b>
<b>2000 <u>Support Services</u></b>	
2100 Support Services - Students	3,537,980.13
2200 Support Services - Instructional Staff	2,553,432.75
2300 Support Services - Administration	7,315,491.91
2400 Support Services - Pupil Health	1,026,439.96
2500 Support Services - Business	1,460,448.58
2600 Operation and Maintenance of Plant Services	8,303,299.45
2700 Student Transportation Services	8,581,314.35
2800 Support Services - Central	3,217,009.55
2900 Other Support Services	152,117.82
<b>Total Support Services</b>	<b>\$36,147,534.50</b>
<b>3000 <u>Operation of Non-Instructional Services</u></b>	
3200 Student Activities	1,027,406.58
3300 Community Services	17,090.10
<b>Total Operation of Non-Instructional Services</b>	<b>\$1,044,496.68</b>
<b>4000 <u>Facilities Acquisition, Construction and Improvement Services</u></b>	
4600 Existing Building Improvement Services	2,582,332.08
<b>Total Facilities Acquisition, Construction and Improvement Services</b>	<b>\$2,582,332.08</b>
<b>5000 <u>Other Expenditures and Financing Uses</u></b>	
5100 Debt Service / Other Expenditures and Financing Uses	89,825,718.81
5200 Interfund Transfers - Out	95,424.00
<b>Total Other Expenditures and Financing Uses</b>	<b>\$89,921,142.81</b>
<b>TOTAL ACTUAL EXPENDITURES &amp; OTHER FINANCING USES</b>	<b>\$265,745,359.61</b>

**PSERS Salary Data (Salary Data should relate to the General Fund only)**

<b>Amount Description</b>	<b>Amount</b>
Total Salary Base for salaries subject to PSERS withholding	40,933,550.00
Total Federally Funded salaries subject to PSERS withholding	828,674.00
	<hr/>

**Title I Expenditure Data**

<b>Amount Description</b>	<b>Amount</b>
Expenditures Funded with Current Title I Funds	1,038,530.35
Expenditures Funded with Carry over Title I Funds	305,108.14
<b>Total Title I Expenditure Data</b>	<hr/> <b>\$1,343,638.49</b> <hr/>

**Title IV Revenue Data**

<b>Amount Description</b>	<b>Amount</b>
Revenue from Title IV-A-1: Student Support and Academic Enrichment Grants	69,645.16
Revenue from Title IV-B: 21st Century Community Learning Centers	<hr/>

**Title V Revenue Data**

<b>Amount Description</b>	<b>Amount</b>
Revenue from Title V-B-2: Rural and Low-Income School Programs	<hr/>
Revenue from Title V-B-1: Small Rural School Achievement (Directly from the Federal Govt)	<hr/>

1 .	<u>Current Special Education Expenditures/Expenses within Functions 1000, 2000, 3100, and 3200</u>	35,009,706.00
2 .	<u>Current Special Education Expenditures for Instruction Functions 1000 and 3200</u>	26,426,089.89
3 .	<u>Current Special Education Expenditures for Pupil Support Services Function 2100</u>	809,225.95
4 .	<u>Current Special Education Expenditures for Instructional Staff Support Services Function 2200</u>	581,027.78
5 .	<u>Current Special Education Expenditures for Student Transportation Support Services Function 2700</u>	1,751,912.00

**Note:** Do not report total Special Education expenditures for the functions listed above. Refer to the AFR User Manual for specific instructions on Funds/Functions/Objects to be included and excluded on each line.

**Benefits for Staff Relative to Collective Bargaining Agreements**

	OBJECT	COVERED	NOT COVERED	TOTAL
<b>10 General Fund</b>				
	211 Medical Insurance			
	212 Dental Insurance			
	215 Eye Care Insurance			
	216 Prescription Insurance			
	271 Self-Insurance Medical Benefits	7,583,055.97		7,583,055.97
	272 Self-Insurance Dental Benefits	574,828.43		574,828.43
	275 Self-Insurance Eye Care Benefits	111,884.71		111,884.71
	276 Self-Insurance Prescription Benefits	184,010.49		184,010.49
	<b>FUND TOTAL</b>	<b>\$8,453,779.60</b>		<b>\$8,453,779.60</b>
<b>50 Enterprise Fund</b>				
	211 Medical Insurance			
	212 Dental Insurance			
	215 Eye Care Insurance			
	216 Prescription Insurance			
	271 Self-Insurance Medical Benefits	143,716.35		143,716.35
	272 Self-Insurance Dental Benefits	9,804.89		9,804.89
	275 Self-Insurance Eye Care Benefits	1,940.03		1,940.03
	276 Self-Insurance Prescription Benefits	31,832.43		31,832.43
	<b>FUND TOTAL</b>	<b>\$187,293.70</b>		<b>\$187,293.70</b>
<b>60 Internal Service Fund</b>	<b>No Self Insurance data to report</b>			
	211 Medical Insurance			
	212 Dental Insurance			
	215 Eye Care Insurance			
	216 Prescription Insurance			
	271 Self-Insurance Medical Benefits			
	272 Self-Insurance Dental Benefits			
	275 Self-Insurance Eye Care Benefits			
	276 Self-Insurance Prescription Benefits			
	<b>FUND TOTAL</b>			
<b>Total of All Funds</b>		<b>\$8,641,073.30</b>		<b>\$8,641,073.30</b>

LEA : 124151902 Coatesville Area SD

Printed 3/31/2022 2:28:32 PM

Function	Special Education (Prior Year)	Nonspecial Education (Prior Year)	Total (Prior Year)	Special Education (Current Year)	Nonspecial Education (Current Year)	Total (Current Year)
2120 Guidance Services	517,841.55	1,763,398.79	2,281,240.34	531,583.00	1,791,275.00	2,322,858.00
2140 Psychological Services	164,657.75	560,711.77	725,369.52	151,401.00	515,575.52	666,976.52
2150 Speech Pathology and Audiology Services						
2160 Social Work Services						
2260 Instruction and Curriculum Development Services	476,799.61	1,623,639.21	2,100,438.82	369,871.00	1,259,425.09	1,629,296.09
2350 Legal and Accounting Services	159,988.63	544,807.08	704,795.71	161,485.00	549,903.02	711,388.02
2420 Medical Services	209,449.06	713,234.05	922,683.11	216,104.00	706,579.11	922,683.11
2440 Nursing Services				43,353.50		43,353.50
2700 Student Transportation Services	2,340,562.19	7,970,284.48	10,310,846.67	1,947,958.00	6,633,356.34	8,581,314.34
<b>Total</b>	<b>\$3,869,298.79</b>	<b>\$13,176,075.38</b>	<b>\$17,045,374.17</b>	<b>\$3,421,755.50</b>	<b>\$11,456,114.08</b>	<b>\$14,877,869.58</b>

(PRINCIPAL AMOUNTS ONLY)

**GOVERNMENTAL FUNDS/ ACTIVITIES**

	<b>Short-Term Borrowing</b>	<b>General Obligation Bonds/Notes</b>	<b>Authority Building Obligations</b>	<b>Other Long-Term Debt</b>	<b>Other Post-Employment Benefits (OPEB)</b>	<b>Compensated Absences</b>	<b>Net Pension Liability</b>	<b>Total</b>
1. Debt at Beginning of Fiscal Year		144,444,115.90	12,395,000.00		12,188,407.00	1,475,187.00	137,756,000.00	308,258,709.90
2. Additional Debt Incurred During Year		102,326,782.00		958,800.00	622,864.00		6,412,000.00	110,320,446.00
3. Retirements and Repayments		77,462,115.90	1,290,000.00	384,157.00		108,998.00		79,245,270.90
4. Debt at End of Fiscal Year		169,308,782.00	11,105,000.00	574,643.00	12,811,271.00	1,366,189.00	144,168,000.00	339,333,885.00
5. Accreted Interest at End Of Fiscal Year		1,684,647.00						1,684,647.00
6. Total Debt and Accreted Interest		170,993,429.00	11,105,000.00	574,643.00	12,811,271.00	1,366,189.00	144,168,000.00	341,018,532.00
7. Current Portion P&I - Due within 1 year		5,658,271.00	1,881,250.00	183,794.00		136,619.00		7,859,934.00
8. Interest Paid during current fiscal year		8,142,428.15	587,495.00	31,253.00				8,761,176.15

(PRINCIPAL AMOUNTS ONLY)

**PROPRIETARY FUNDS**

	<b>Short-Term Borrowing</b>	<b>General Obligation Bonds/Notes</b>	<b>Authority Building Obligations</b>	<b>Other Long-Term Debt</b>	<b>Other Post-Employment Benefits (OPEB)</b>	<b>Compensated Absences</b>	<b>Net Pension Liability</b>	<b>Total</b>
1. Debt at Beginning of Fiscal Year					187,732.00	69,599.00	2,685,000.00	2,942,331.00
2. Additional Debt Incurred During Year					7,844.00	7,961.00	125,000.00	140,805.00
3. Retirements and Repayments								
4. Debt at End of Fiscal Year					195,576.00	77,560.00	2,810,000.00	3,083,136.00
5. Accreted Interest at End Of Fiscal Year								
6. Total Debt and Accreted Interest					195,576.00	77,560.00	2,810,000.00	3,083,136.00
7. Current Portion P&I - Due within 1 year								
8. Interest Paid during current fiscal year								

**Total Principal and Interest Payments Made by Your School - All Funds**

Function	Fund		Principal (910)	Principal (920)	Interest (830)	Total (Principal +Interest)	Misc Other Uses (990)
5110	10	General Fund	996,751.28	1,290,000.00	5,221,191.25	7,507,942.53	
5110	20	Special Revenue Funds					
5110	30	Capital Projects Funds					
5110	40	Debt Service Fund					
5110	90	Permanent Fund					
5120	10	General Fund					
5120	20	Special Revenue Funds					
5120	30	Capital Projects Funds	78,807,495.00		3,508,731.00	82,316,226.00	
5120	40	Debt Service Fund					

<b>Total Debt Payments - Governmental Funds</b>			<b>\$79,804,246.28</b>	<b>\$1,290,000.00</b>	<b>\$8,729,922.25</b>	<b>\$89,824,168.53</b>	
-------------------------------------------------	--	--	------------------------	-----------------------	-----------------------	------------------------	--

Function	Fund		Principal (910)	Principal (920)	Interest (830)	Total (Principal +Interest)
5110	50	Enterprise Fund				
5110	60	Internal Service Fund				
5120	50	Enterprise Fund				
5120	60	Internal Service Fund				

<b>Total Debt Payments - Proprietary Funds</b>						
------------------------------------------------	--	--	--	--	--	--



LEA : 124151902 Coatesville Area SD

Printed 3/31/2022 2:28:35 PM

**Debt Details**  
**Governmental Funds/ Activities**

Debt Category	Debt Issue Date (MM/YYYY)	Principal Amounts Only			Debt at End of Fiscal Year	Current Portion Due Within One Year (Principal and Interest)	Interest Paid During Fiscal Year
		Debt at Beginning of Fiscal Year	Additions	Reductions / Repayments			
General Obligation Bonds/Notes – CIB	11/2020		59,493,000.00		59,493,000.00	2,413,597.00	3,952,522.00
General Obligation Bonds/Notes – CIB	07/2019	23,055,000.00		133,000.00	22,922,000.00	1,041,674.00	908,046.00
General Obligation Bonds/Notes – CIB	07/2019	5,931,000.00		5,931,000.00			
General Obligation Bonds/Notes – CIB	03/2017	57,745,000.00		13,685,000.00	44,060,000.00	2,203,000.00	2,202,067.80
General Obligation Bonds/Notes – CIB	03/2014	4,348,115.90		4,348,115.90			
General Obligation Bonds/Notes – CIB	07/2010	53,365,000.00		53,365,000.00			
General Obligation Bonds/Notes – CAB	11/2020		21,050,075.00		21,050,075.00		
General Obligation Bonds/Notes – CAB	11/2020		6,432,770.00		6,432,770.00		180,204.66
General Obligation Bonds/Notes – CAB	11/2020		3,005,755.00		3,005,755.00		56,000.00
General Obligation Bonds/Notes – CAB	11/2020		12,345,182.00		12,345,182.00		843,587.69
Authority Building Obligations – CIB	06/2018	12,395,000.00		1,290,000.00	11,105,000.00	1,881,250.00	587,495.00
Extended Term Financing Agreements			958,800.00	384,157.00	574,643.00	183,794.00	31,253.00
Compensated Absences		1,475,187.00		108,998.00	1,366,189.00	136,619.00	
Other Post-Employment Benefits (OPEB)		12,188,407.00	622,864.00		12,811,271.00		
Net Pension Liability		137,756,000.00	6,412,000.00		144,168,000.00		
<b>Totals for Debt Entered:</b>		<b>\$308,258,709.90</b>	<b>\$110,320,446.00</b>	<b>\$79,245,270.90</b>	<b>\$339,333,885.00</b>	<b>\$7,859,934.00</b>	<b>\$8,761,176.15</b>

**Bond Details**  
**Proprietary Funds**

Debt Category	Debt Issue Date (MM/YYYY)	Principal Amounts Only			Debt at End of Fiscal Year	Current Portion Due Within One Year (Principal and Interest)	Interest Paid During Fiscal Year
		Debt at Beginning of Fiscal Year	Additions	Reductions / Repayments			
Compensated Absences		69,599.00	7,961.00		77,560.00		
Other Post-Employment Benefits (OPEB)		187,732.00	7,844.00		195,576.00		
Net Pension Liability		2,685,000.00	125,000.00		2,810,000.00		
<b>Totals for Debt Entered:</b>		<b>\$2,942,331.00</b>	<b>\$140,805.00</b>		<b>\$3,083,136.00</b>		

LEA : 124151902 Coatesville Area SD

Printed 3/31/2022 2:28:35 PM

**Accreted Interest Detail**  
**Governmental Funds/ Activities**

Debt Category	Debt Issue Date (MM/YYYY)	Beginning Accreted Interest	Additions	Reductions	Ending Accreted Interest	Ending bond Principal	Ending Principal Plus Accreted Interest
General Obligation Bonds/Notes – CAB	11/2020		819,817.00		819,817.00	21,050,075.00	21,869,892.00
General Obligation Bonds/Notes – CAB	11/2020		244,169.00		244,169.00	6,432,770.00	6,676,939.00
General Obligation Bonds/Notes – CAB	11/2020		113,501.00		113,501.00	3,005,755.00	3,119,256.00
General Obligation Bonds/Notes – CAB	11/2020		507,160.00		507,160.00	12,345,182.00	12,852,342.00
<b>Totals for Debt Entered:</b>			<b>\$1,684,647.00</b>		<b>\$1,684,647.00</b>	<b>\$42,833,782.00</b>	<b>\$44,518,429.00</b>

**General Fund (10)**

**Section 1: Tuition/Purchased Services as Reported within Expenditure Detail**

	Amount
Tuition Reported in General Fund Expenditures 1000-560	67,688,590.43
Purchased Services in General Fund Expenditures 1000-594 and 1000-597	746.53
<b>Section 1 Total</b>	<b>\$67,689,336.96</b>

**Section 2: Tuition Paid to Institution Types During Fiscal Year**

	Tuition Paid For Nonspecial Education	Tuition Paid For Special Education	Total
1 1306 Institutions			
2 Institutionalized Children's Programs			
3 Juveniles Incarcerated in Adult Facilities			
4 Residential Treatment Facilities			
5 Other Local Education Agencies	1,452.96	200,850.57	202,303.53
6 Brick and Mortar Charter Schools	35,579,503.47	18,849,357.34	54,428,860.81
7 Cyber Charter Schools	4,469,425.19	1,644,378.52	6,113,803.71
8 Career and Technology Centers	3,635,510.00		3,635,510.00
9 Approved Private Schools		2,939,808.26	2,939,808.26
10 PA Chartered Schools for the Deaf and Blind			
11 Private Residential Rehabilitative Institutions	93,943.44	3,428.13	97,371.57
12 Juvenile Detention Centers	121,019.08		121,019.08
13 Special Program Jointures			
14 Other Tuition Not Included Elsewhere In This Section	150,660.00		150,660.00
<b>Section 2 Total</b>	<b>\$44,051,514.14</b>	<b>\$23,637,822.82</b>	<b>\$67,689,336.96</b>

LEA : 124151902 Coatesville Area SD

Printed 3/31/2022 2:28:40 PM

**Food Service / Cafeteria Operations Fund (51)**

**3000 Operation of Non-Instructional Services**

**Total**

**100 Personnel Services – Salaries**

100 Personnel Services – Salaries 848,845.00

**Total Personnel Services – Salaries \$848,845.00**

**200 Personnel Services – Employee Benefits**

210 Group Insurance – Contracted Provider 1,587.00

220 Social Security Contributions 62,666.00

230 PSERS Retirement Contributions 279,250.00

250 Unemployment Compensation 3,242.00

260 Workers' Compensation 7,434.00

270 Group Insurance – Self-Insurance 170,728.00

280 Other Post-Employment Benefits (OPEB) 1,431.00

291 Other Retirement Plans (123,000.00)

292 Health Savings Accounts 5,400.00

**Total Personnel Services – Employee Benefits \$408,738.00**

**300 Purchased Professional and Technical Services**

300 Purchased Professional and Technical Services 3,663.00

**Total Purchased Professional and Technical Services \$3,663.00**

**400 Purchased Property Services**

430 Repairs and Maintenance Services 1,634.10

**Total Purchased Property Services \$1,634.10**

**500 Other Purchased Services**

580 Travel 489.00

**Total Other Purchased Services \$489.00**

**600 Supplies**

610 General Supplies 62,021.15

620 Energy 1,159.96

630 Food 810,124.00

**Total Supplies \$873,305.11**

**700 Property**

740 Depreciation 6,605.00

**Total Property \$6,605.00**

**800 Other Objects**

810 Dues and Fees 895.00

**Total Other Objects \$895.00**

**Total 3000 Operation of Non-Instructional Services \$2,144,174.21**

Food Service / Cafeteria Operations Fund (51)

3100 Food Services

Elementary                      Secondary                      Federal                      Total

100 Personnel Services – Salaries

100 Personnel Services – Salaries 848,845.00

**Total Personnel Services – Salaries \$848,845.00**

200 Personnel Services – Employee Benefits

210 Group Insurance – Contracted Provider 1,587.00

220 Social Security Contributions 62,666.00

230 PSERS Retirement Contributions 279,250.00

250 Unemployment Compensation 3,242.00

260 Workers' Compensation 7,434.00

270 Group Insurance – Self-Insurance 170,728.00

280 Other Post-Employment Benefits (OPEB) 1,431.00

291 Other Retirement Plans (123,000.00)

292 Health Savings Accounts 5,400.00

**Total Personnel Services – Employee Benefits \$408,738.00**

300 Purchased Professional and Technical Services

300 Purchased Professional and Technical Services 3,663.00

**Total Purchased Professional and Technical Services \$3,663.00**

400 Purchased Property Services

430 Repairs and Maintenance Services 1,634.10

**Total Purchased Property Services \$1,634.10**

500 Other Purchased Services

580 Travel 489.00

**Total Other Purchased Services \$489.00**

600 Supplies

610 General Supplies 62,021.15

620 Energy 1,159.96

630 Food 810,124.00

**Total Supplies \$873,305.11**

700 Property

740 Depreciation 6,605.00

**Total Property \$6,605.00**

800 Other Objects

810 Dues and Fees 895.00

**Total Other Objects \$895.00**

**Total 3100 Food Services \$2,144,174.21**

	<u>Food Service(51)</u>	<u>Child Care Operations(52)</u>	<u>Other Enterprise(58)</u>	<u>Internal Service(60)</u>	<u>Total</u>
<b>3000 <u>Operation of Non-Instructional Services</u></b>					
3100 Food Services	2,144,174.21				2,144,174.21
<b>Total Operation of Non-Instructional Services</b>	<b>\$2,144,174.21</b>				<b>\$2,144,174.21</b>
<b>TOTAL ACTUAL EXPENDITURES &amp; OTHER FINANCING USES</b>	<b>\$2,144,174.21</b>				<b>\$2,144,174.21</b>

LEA : 124151902 Coatesville Area SD

Printed 3/31/2022 2:28:48 PM

Fund	School	School Number	Local Personnel	Local Nonpersonnel	State Personnel	State Nonpersonnel	Federal Personnel	Federal Nonpersonnel	Total	Explanation
10										
	Caln El Sch	1376	3,992,059.03	192,561.81	212,555.13		178,068.39	31,022.57	4,606,266.93	
	Coatesville Area SD Cyber Academy	8415	273,142.44	6,375.68			4,648.60		284,166.72	
	Coatesville Area SHS	5012	13,131,328.55	762,000.44			102,562.96	56,186.49	14,052,078.44	
	Coatesville Intermediate HS	8416	8,218,188.77	656,792.62			41,380.94	7,578.93	8,923,941.26	
	East Fallowfield El Sch	1374	3,343,646.64	196,076.55	151,031.98		173,634.40	26,154.14	3,890,543.71	
	Kings Highway El Sch	1375	4,515,742.76	183,526.13	215,695.04		313,705.29	30,029.36	5,258,698.58	
	North Brandywine MS	8467	5,746,933.49	194,835.11			41,540.80	6,436.96	5,989,746.36	
	Rainbow El Sch	1370	6,795,375.65	294,863.33	429,929.88		248,658.25	42,284.34	7,811,111.45	
	Reeceville El Sch	7334	4,690,367.95	231,937.81	94,712.97		106,913.75	54,160.92	5,178,093.40	
	Scott MS	7767	5,143,025.76	278,343.14			216,885.83	13,612.53	5,651,867.26	
<b>Total</b>			<b>55,849,811.04</b>	<b>2,997,312.62</b>	<b>1,103,925.00</b>		<b>1,427,999.21</b>	<b>267,466.24</b>	<b>61,646,514.11</b>	